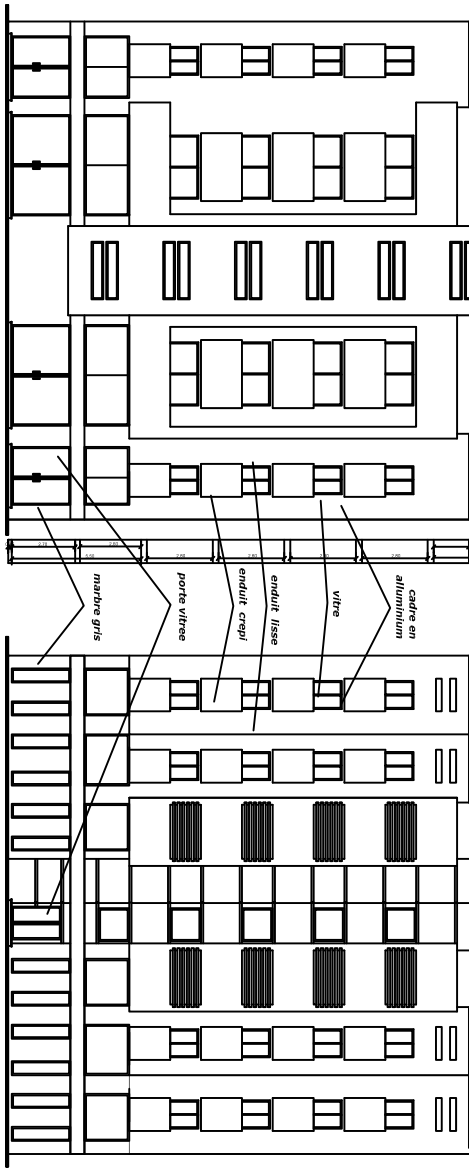
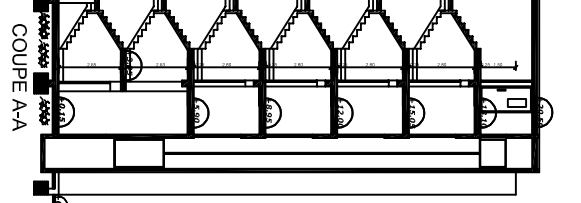


| | |
|--|-------------------------------|
| PREFECTURE OUDA ANGAD COMMUNE OUDA | |
| MAITRE DOUVRAGE | OFFICE NATIONAL D'ELECTRICITE |
| PETITONNAIRE | S th . AL OUBRAINE |
| OPERATION : NOUR | |
| PROJET URBAIN "ANNOUR" DE CONSTRUCTION D'UNE RESIDENCE FERMEE EN R+4+S0US SOU+MEZZANINE | |
| PROJET | SITUATION |
| DATE | MAI 2014 |
| TF | Partie du 13247/0 |
| ECH | 1/100 - 1/500 |
| DESIGNATION | PLANCHE 4/6 |
| | TYPE 2 |
| | IMMEUBLE DFC-HH-K |
| SOU'AHMI HICHAM- ARCHITECTE AMINE EL MOUANNI - ARCHITECTE D.P.L.G ZOHIR KHALID - ARCHITECTE | |



JPE B-B



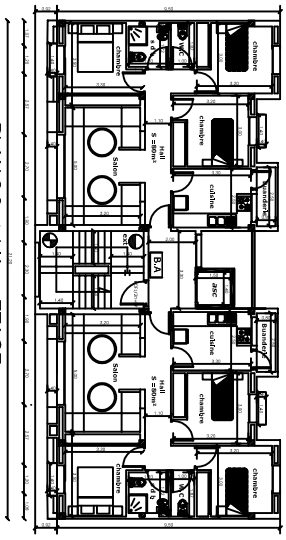
LEGENDE :

- ① cadre en aluminium
- ② vitre
- ③ enduit lisse
- ④ enduit craquelé
- ⑤ porte vitree
- ⑥ marches gris

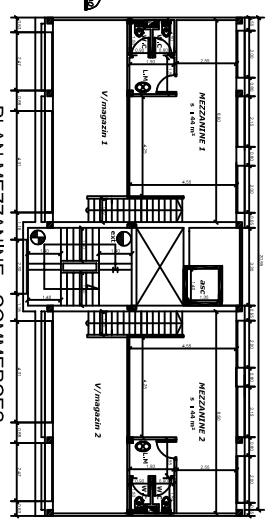
ESRIME DE RESUME DIMENSIONNEL :

- 21 : colonne acie
- 22 : colonne acie
- 23 : volume finis de ame
- 24 : ETS a produit 10 kg
- 25 : ETS a produit 10 kg
- F-41 : mur coupe feu 4 heures
- F-21 : dalle coupe feu 2 heures
- F-21 : dalle coupe feu 4 heures
- 1 : pote coupe feu

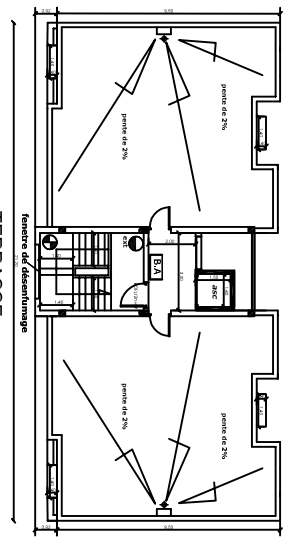
PLAN 2,3 et 4 ième ETAGE



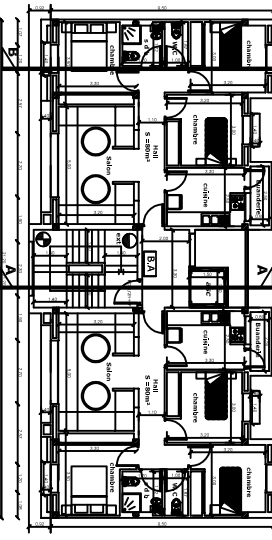
PLAN MEZZANINE - COMMERCES



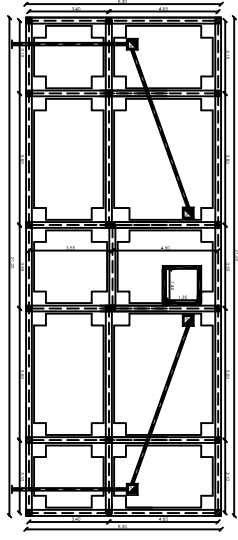
TERRASSE



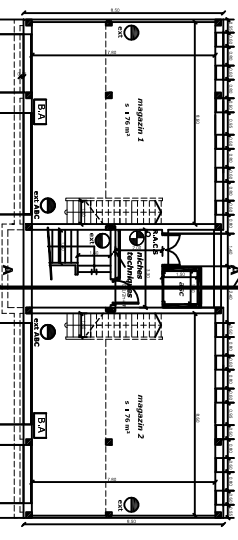
PLAN 1er ETAGE



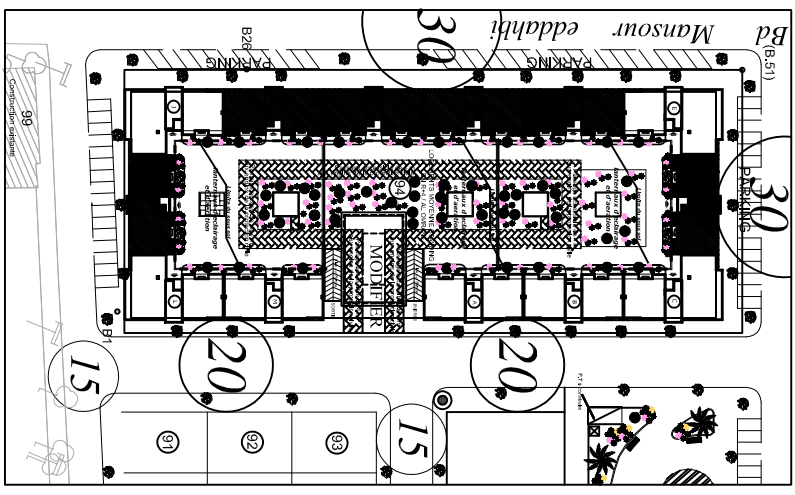
FONDACTIONS

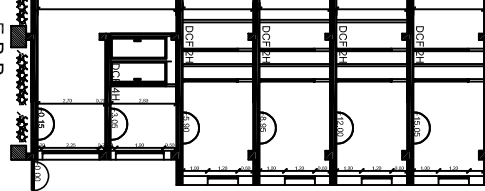


PLAN RDC - COMMERCES

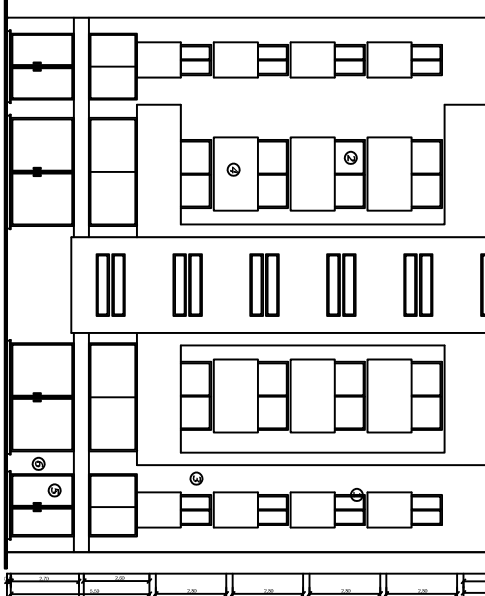


PLAN DE SITUATION

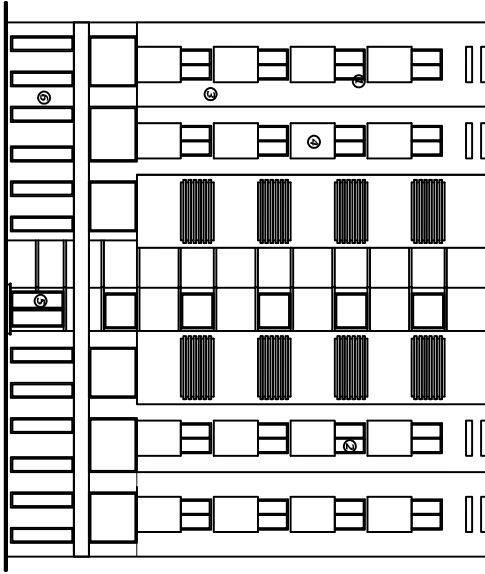




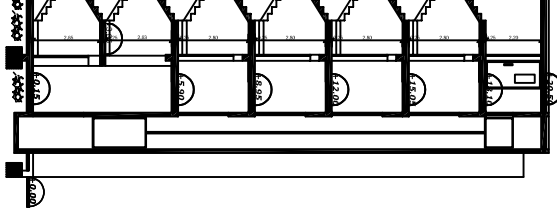
E-B-B



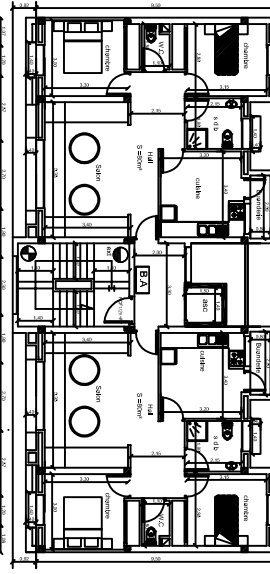
FAÇADE PRINCIPALE



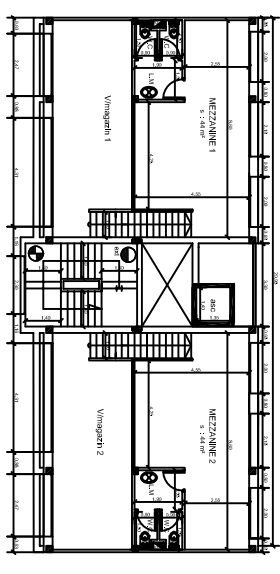
FAÇADE ARRIERE



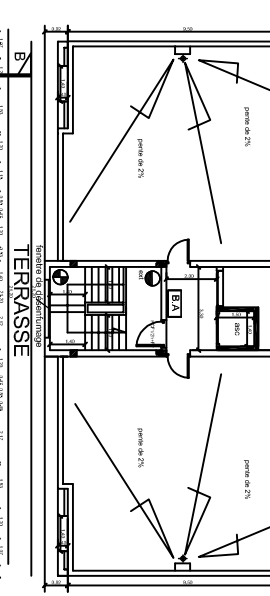
UPE A-A



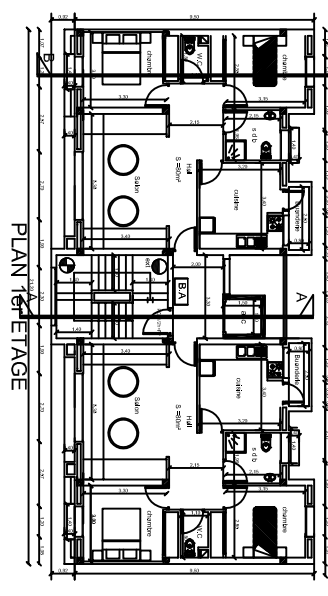
PLAN 2,3 et 4 ième ETAGE



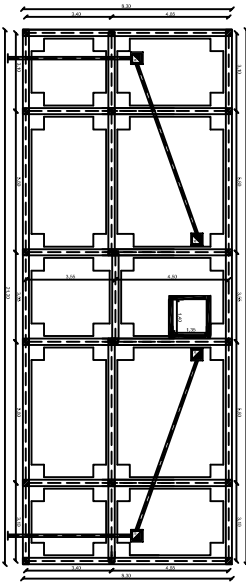
PLAN MEZZANINE - COMMERCES



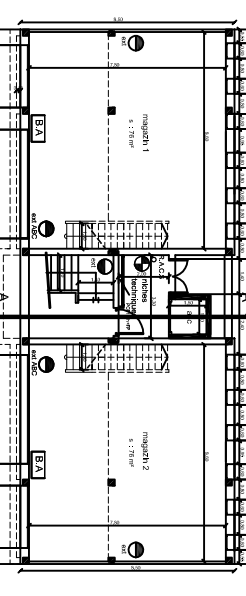
PLAN TERRASSE



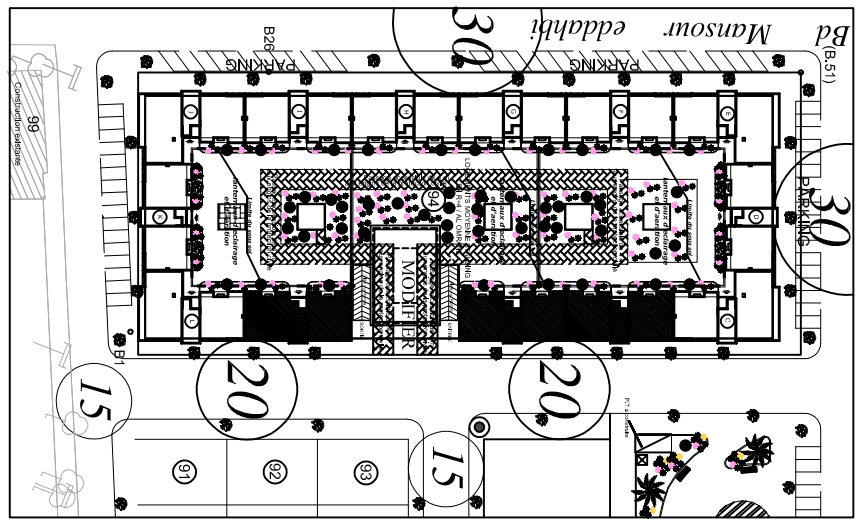
PLAN 1er ETAGE



PLAN RDC - COMMERCES



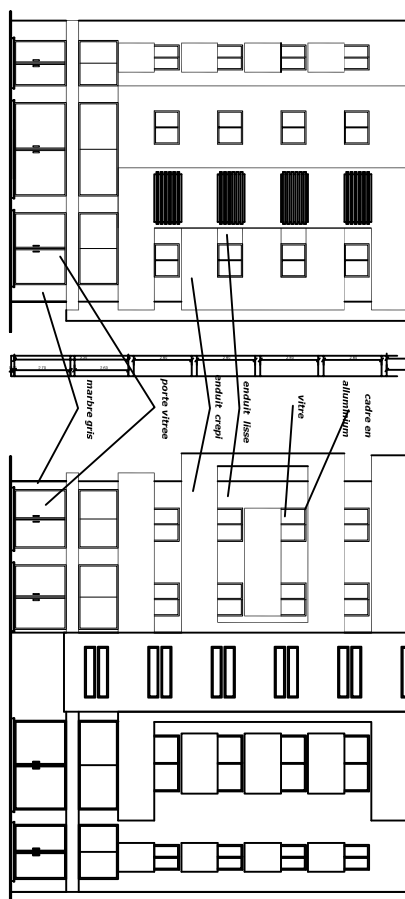
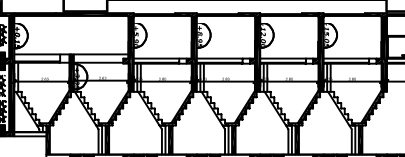
PLAN RDC - COMMERCES



PLAN DE SITUATION

| | |
|---|---|
| <p align="center">PREFECTURE OUDA ANGAD COMMUNE OUDA</p> | |
| MATRE D'OUVRAGE | OFFICE NATIONAL D'ELECTRICITE |
| PETITIONNAIRE | Sr. AL OMRANE |
| <p align="center">OPERATION : NOUR</p> | |
| PROJET | PROJET URBAIN "ANNOUR" DE CONSTRUCTION D'UNE RESIDENCE FERMEE EN R+4+SOUS SOL+MEZZANINE |
| DATE | MAL 2014 |
| TF | Partie du 13247/0 |
| ECH | 1/100 - 1/500 |
| DESIGNATION | PLANCHE 3/6 |
| | TYPE 1 |
| | IMMEUBLE A-B-M |
| <p align="center">SOUHAH HICHAM- ARCHITECTE AMINE EL MOUMNI - ARCHITECTE D.P.L.G ZOHIR KHALID - ARCHITECTE</p> | |

E-DE SECURITE DIMENSIONE
 minimeur
 colonne scde
 robotee d'insende aere
 2x5 a pature 10 kg
 mur coupe feu 4 heures
 dalle coupe feu 4 heures
 dalle coupe feu 2 heures
 porte coupe feu
 DE : 1
 cadre en aluminium
 tre
 idule fissé
 arde vitree
 arbre gris



| | |
|--|---|
| PHT-ECTURE OUIDA ANGAU COMMUNE OUIDA | |
| MAÎTRE D'OUVRAGE | OFFICE NATIONAL D'ÉLECTRICITÉ |
| PÉTITIONNAIRE | S. AL OMRANE |
| OPERATION : NOUR | |
| PROJET URBAIN "ANNOUR" DE CONSTRUCTION D'UNE RESIDENCE FERMEE EN R+4-SOUS SOL+MEZZAINE | |
| DATE | MAL 2014 |
| ECH | 1/100 - 7/500 |
| DESIGNATION | PLANICHE 606 |
| SITUATION | Lot n°194 LOTISSEMENT NOUR Bd MANSOUR EDWAHI |
| TYPE | IMMEUBLE EA |
| SOUHAHI HICHAM - ARCHITECTE AMINE EL MOUMNI - ARCHITECTE D.P.L.G ZOHIR KHALID - ARCHITECTE | |

