

Maitre de l'ouvrage **AL OMRANE AGADIR**

PROJET (operation KASBAH)

CONSTRUCTION DE 96 LOGEMENTS SOCIAUX ET 16 LOGEMENTS PROMOTIONNELS
 Régularisation de situation - PLAN TYPE
 BLOC (D.E.F) PLAN MODIFICATIF

PLANS
 COUPE
 FACADES
 MASSE
 SITUATION

Lieu	CU OUARZAZATE
Lotissement	AL WAHDA OUARZAZATE
Ref	1/2
Planche	
Echelle	1/100
Date	2009

Modifications	Date	Ref	Planche	Echelle
PLAN MODIFIE	LE: 30/03/09			1/100
PLAN MODIFIE	LE: 21/04/09			



BENYAHIA MOHAMED
 ARCHITECTE 15 AVENUE
 388 HAY EL MASSOUR
 EDDAHBI C.G.I.
 OUARZAZATE
 TEL/FAX: 044 88 33 40

Chef de service de l'instruction
 Signé: HISHAM KISSAMI

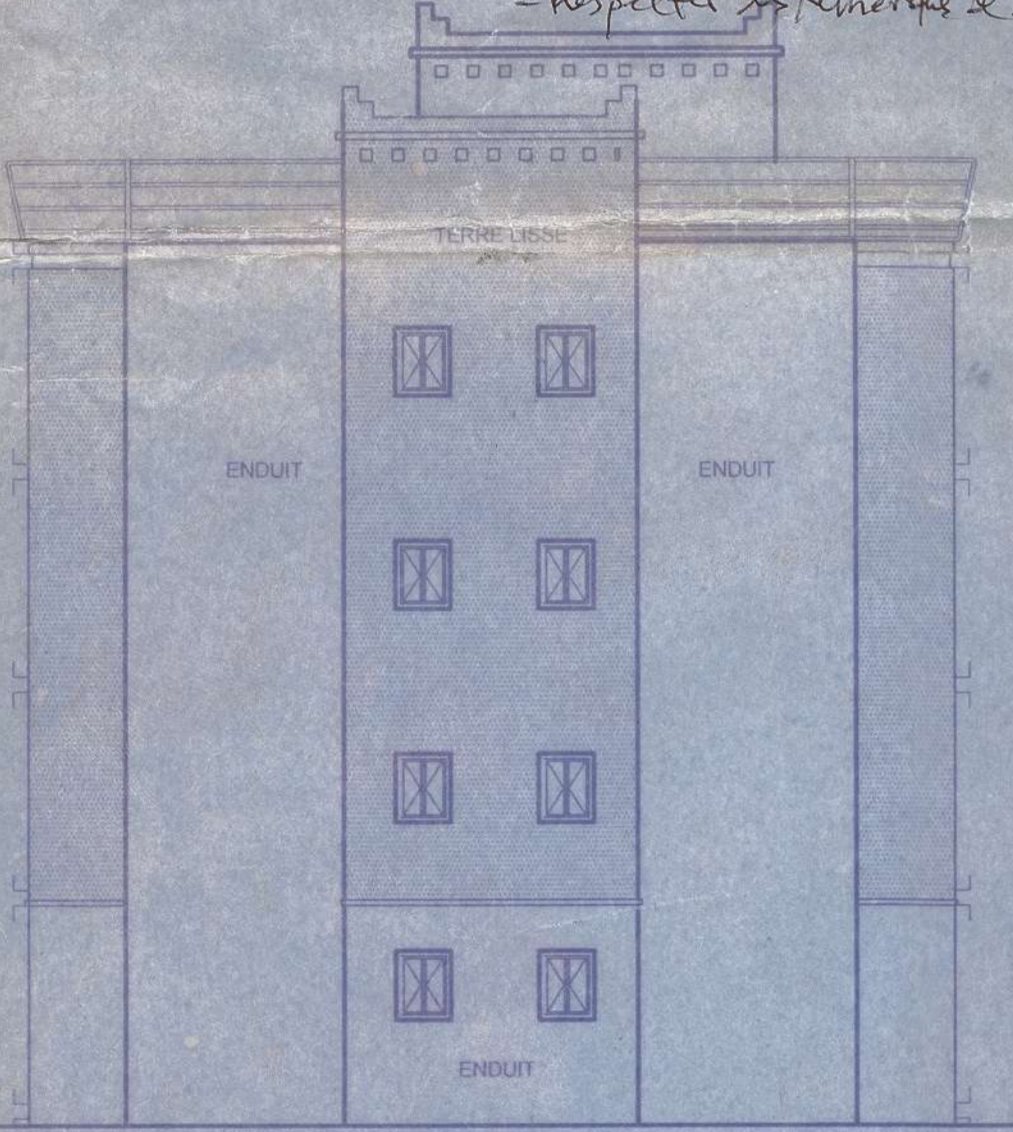
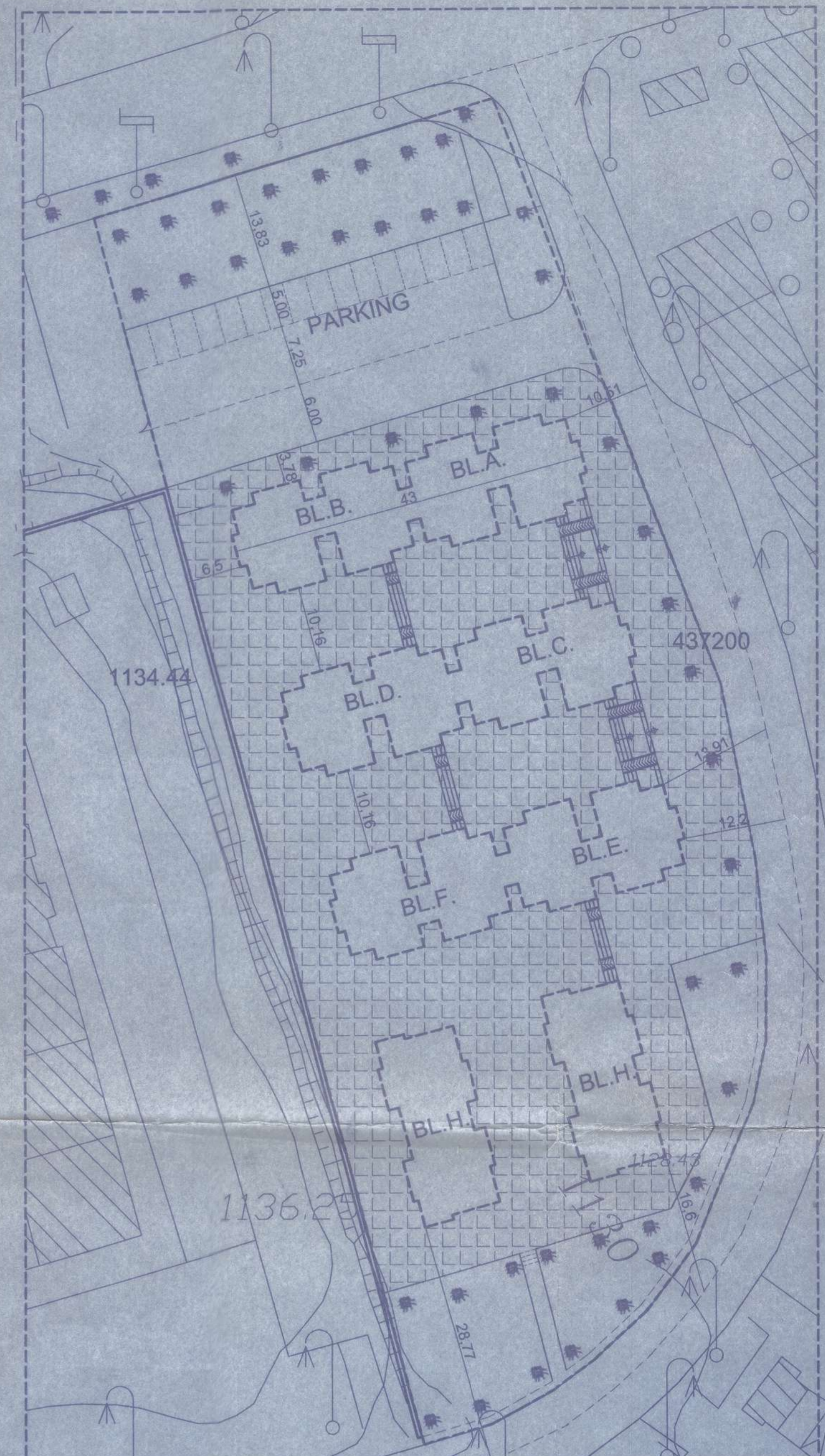
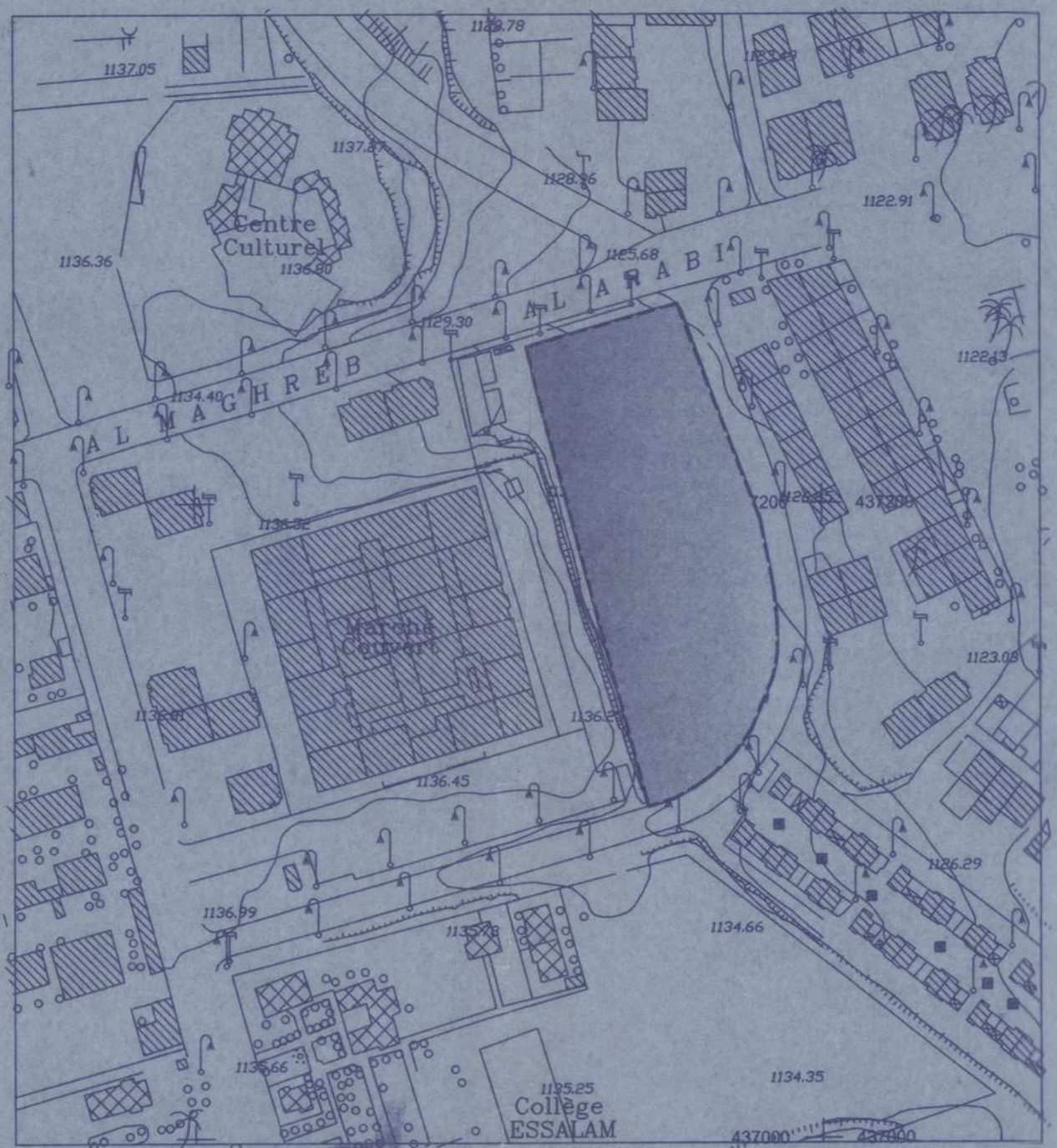
Ne Variations

Agence Urbaine de Ouazzazate-2e.ta
 CT/CP
 Du 2-8 DEC-2011
 Avis Favorable S/R de

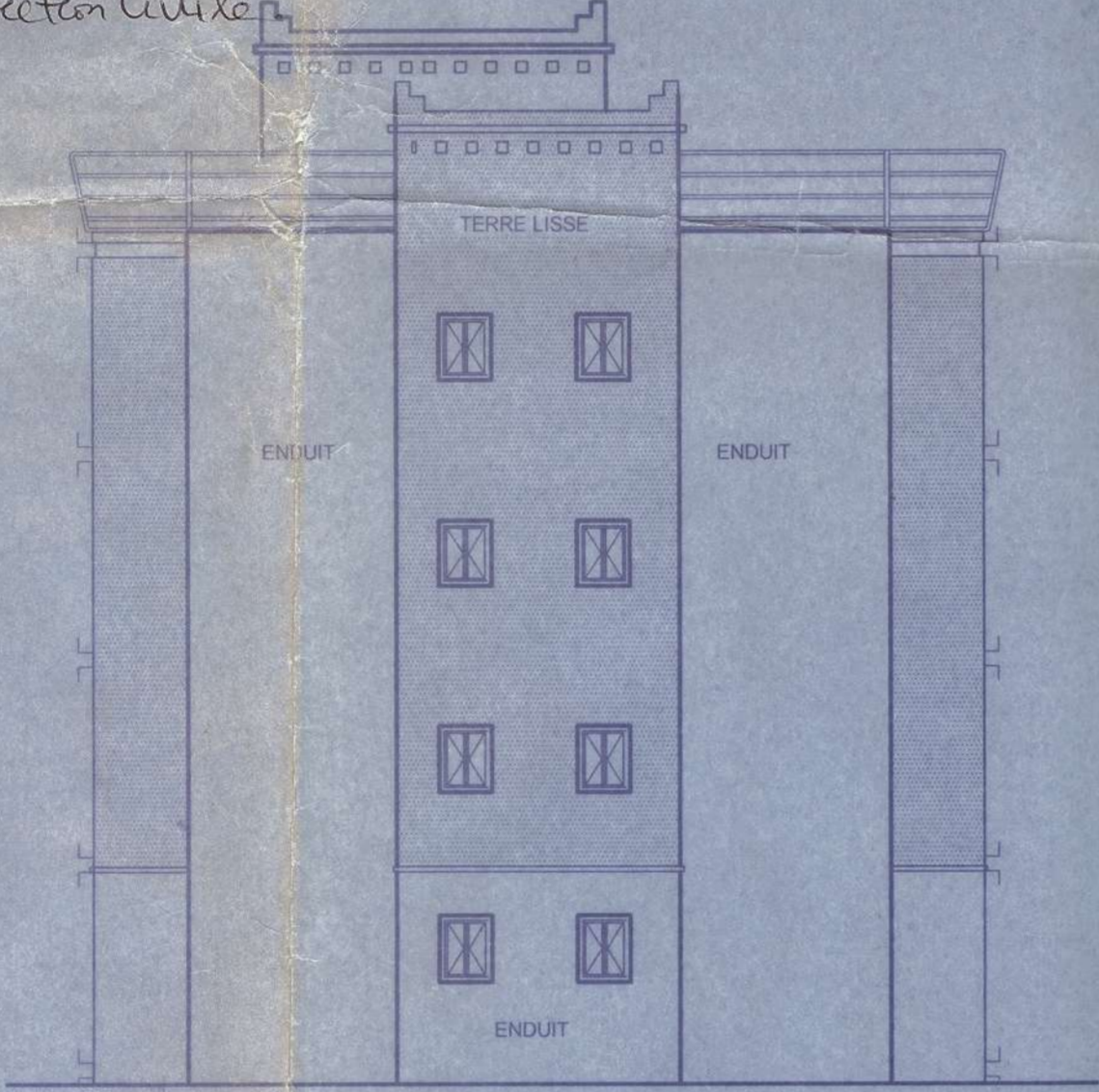


BENYAHIA Mohamed
 Architecte S.A.M.H. Bruxelles
 388, Hay El Massour Eddahbi
 tel: 024 88 33 40 - Ouazzazate

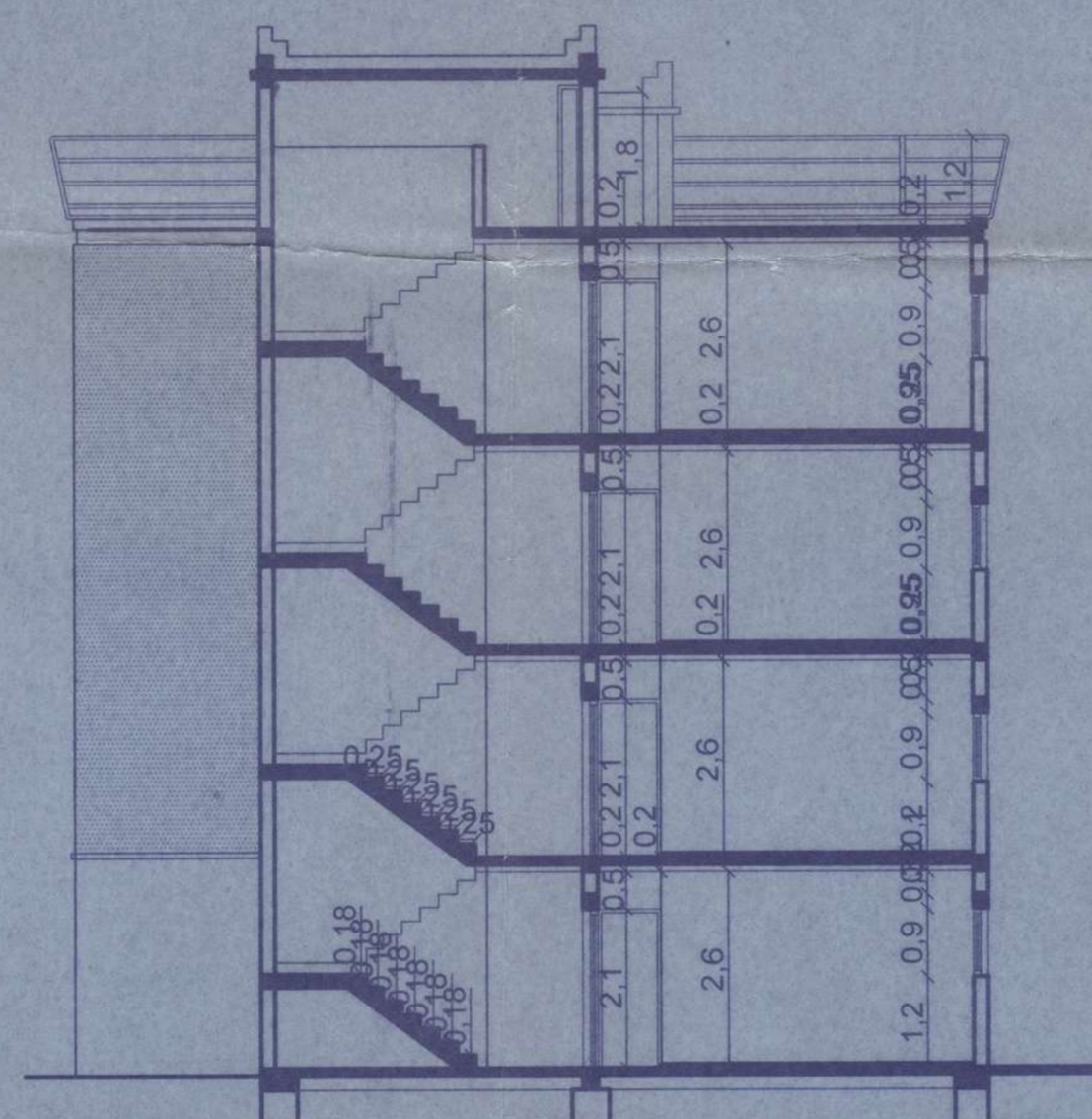
Suite aux conformes de la Commission CT/CP
 du 12-10-2011 du lotissement Al Wahda,
 SIP - Respecter les droits des tiers
 - Assurer la situation juridique du terrain
 conformément à la loi 20-03
 - Fournir l'attestation de stabilité
 - Fournir le mot de renseignements
 - Respecter les règlements de la Protection Civile



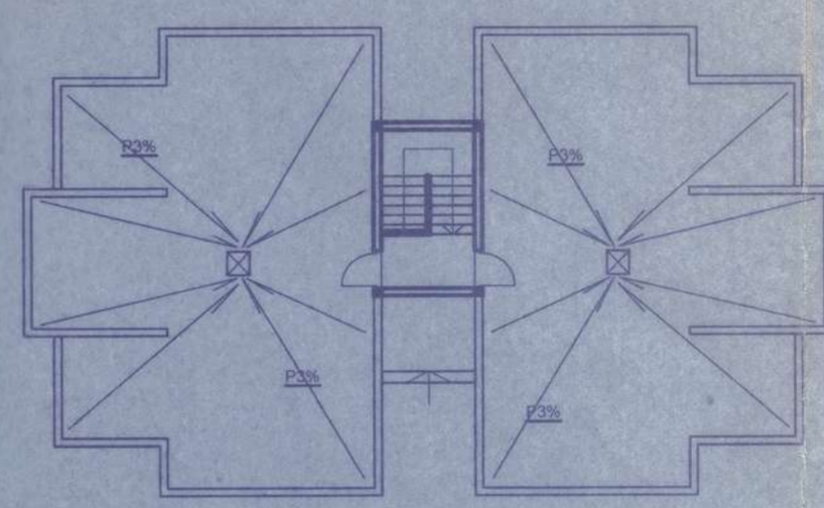
FACADE .L.DROITE



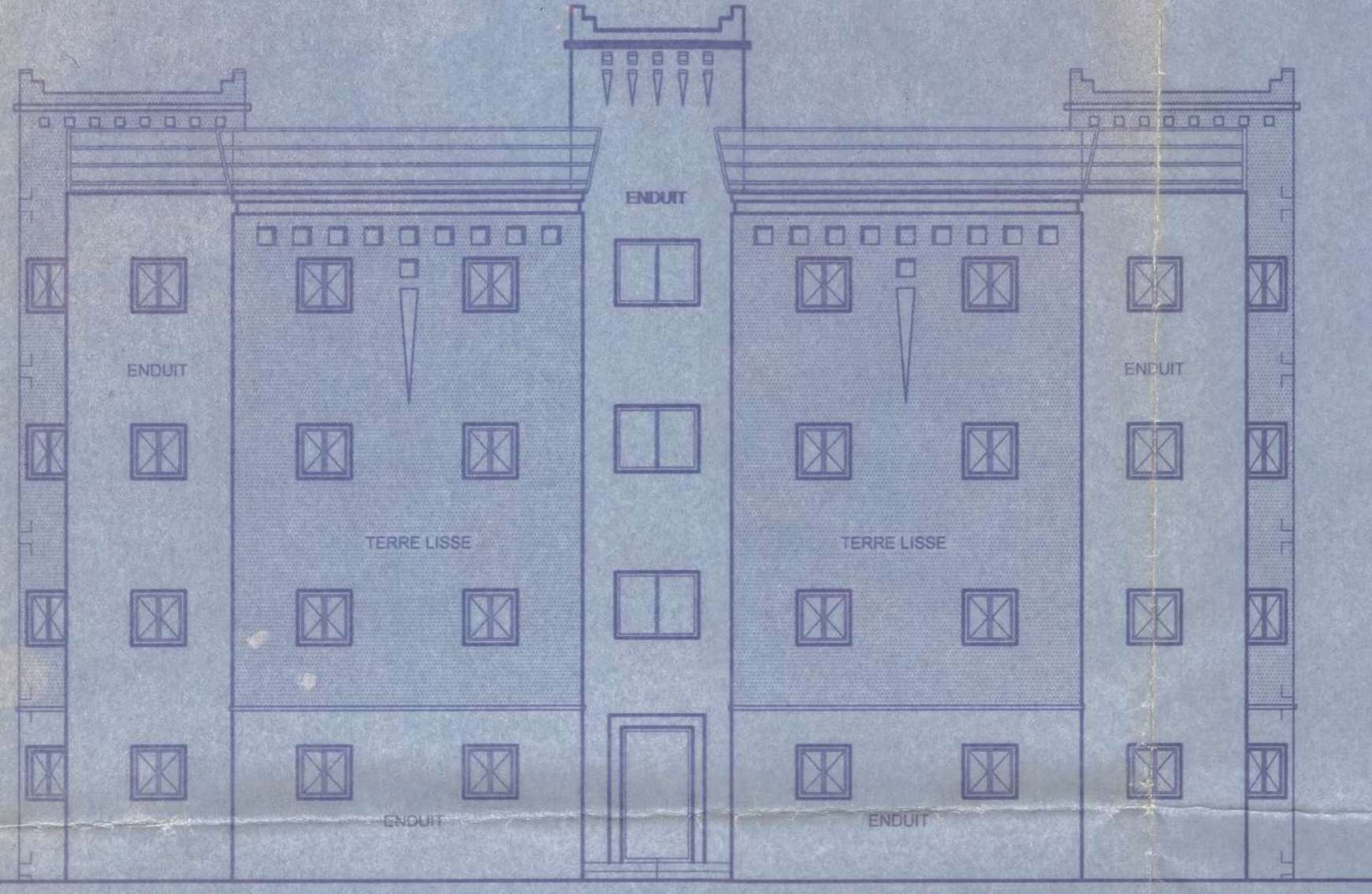
FACADE .GAUCHE



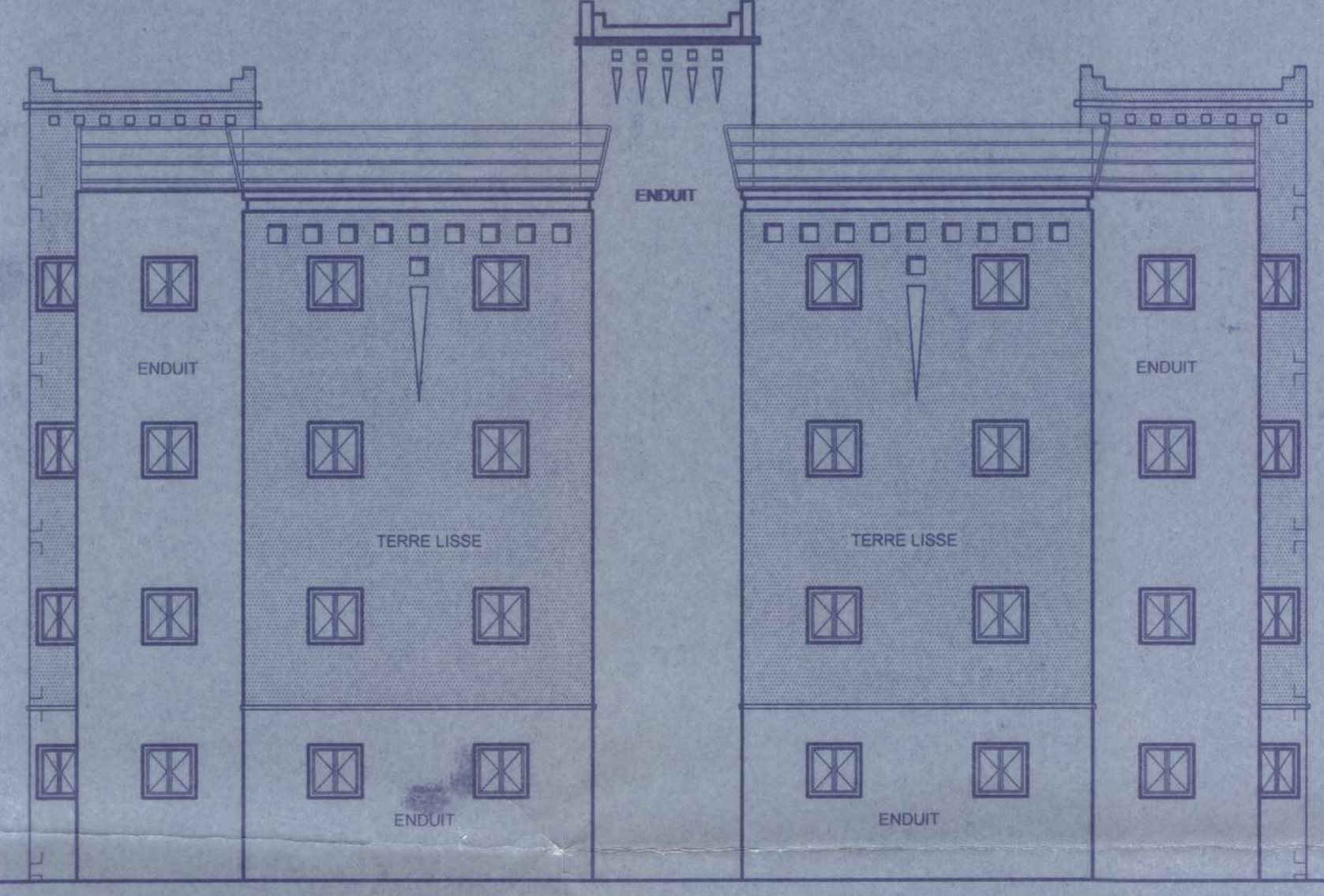
COUPE B-B



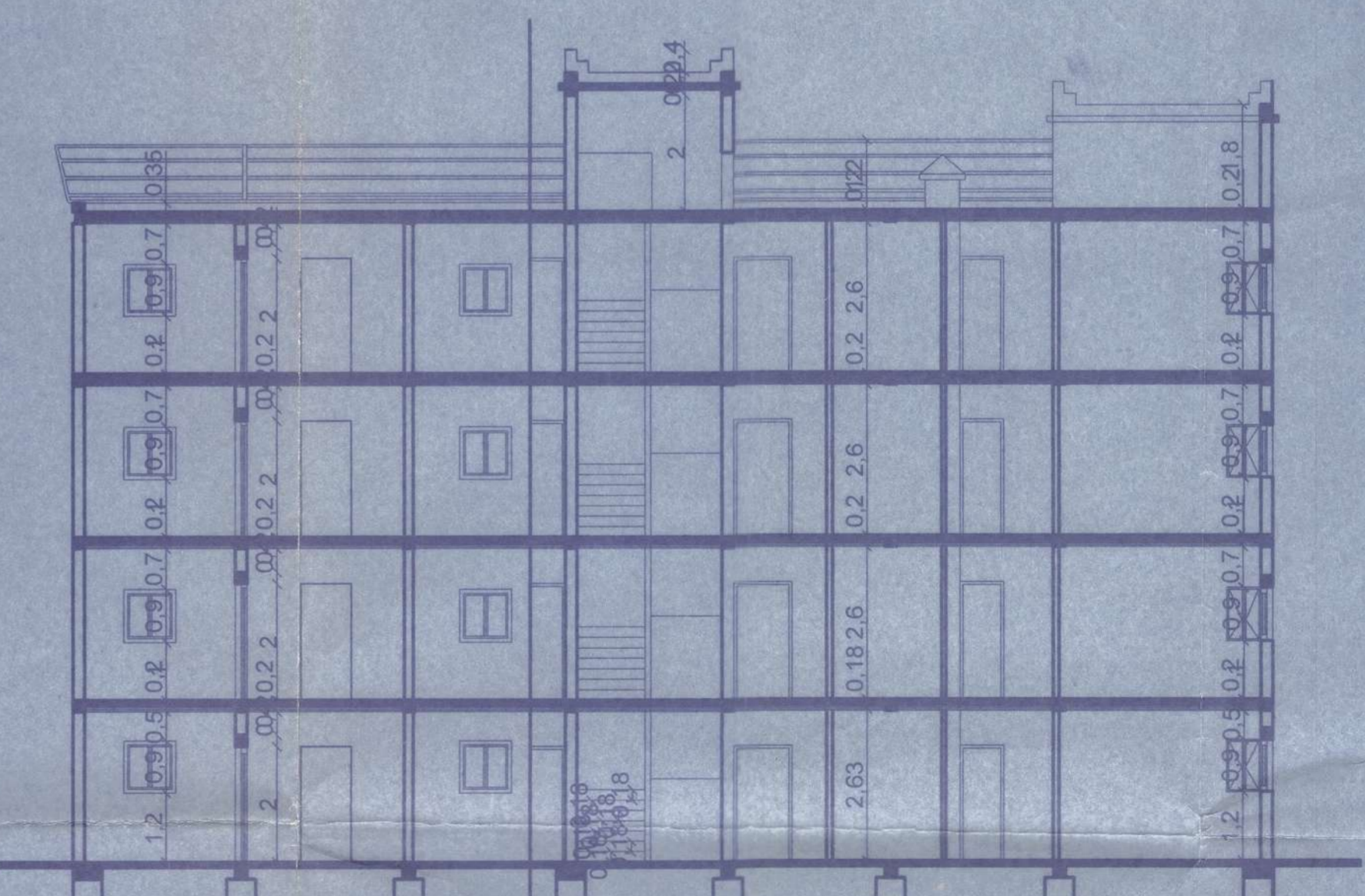
TERRASSE ECT 1/200



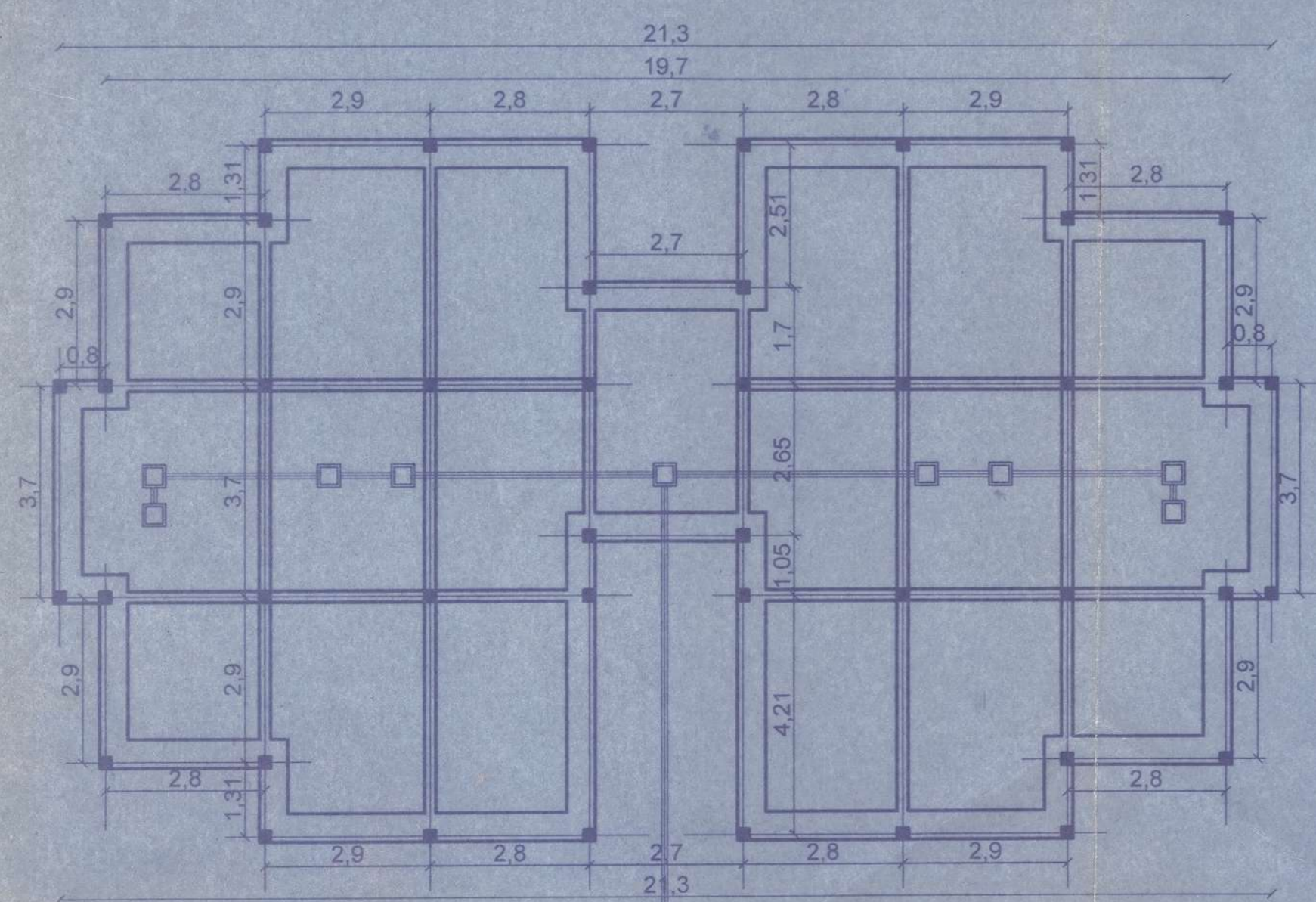
FACADE PRINCIPALE



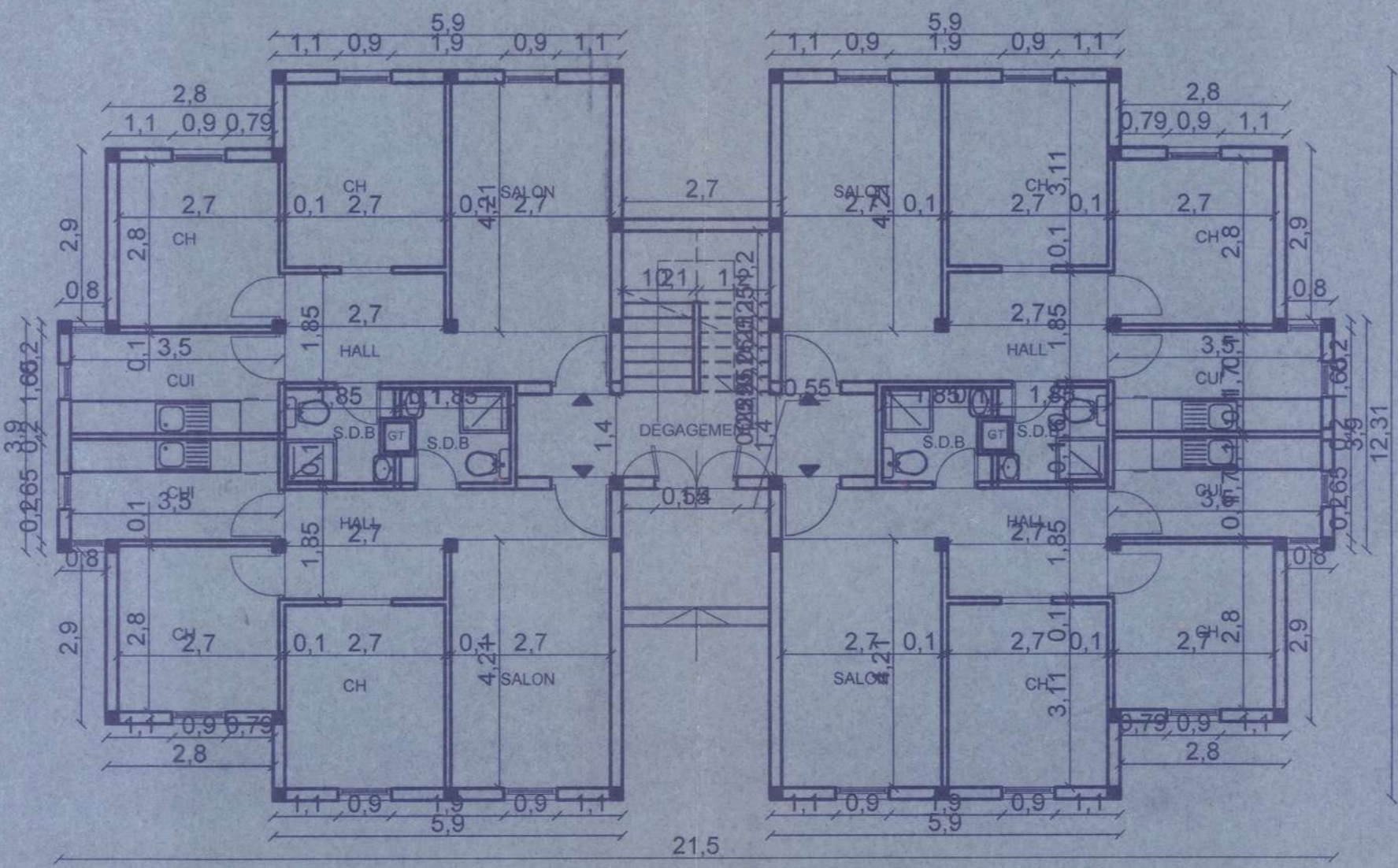
FACADE ARRIERE



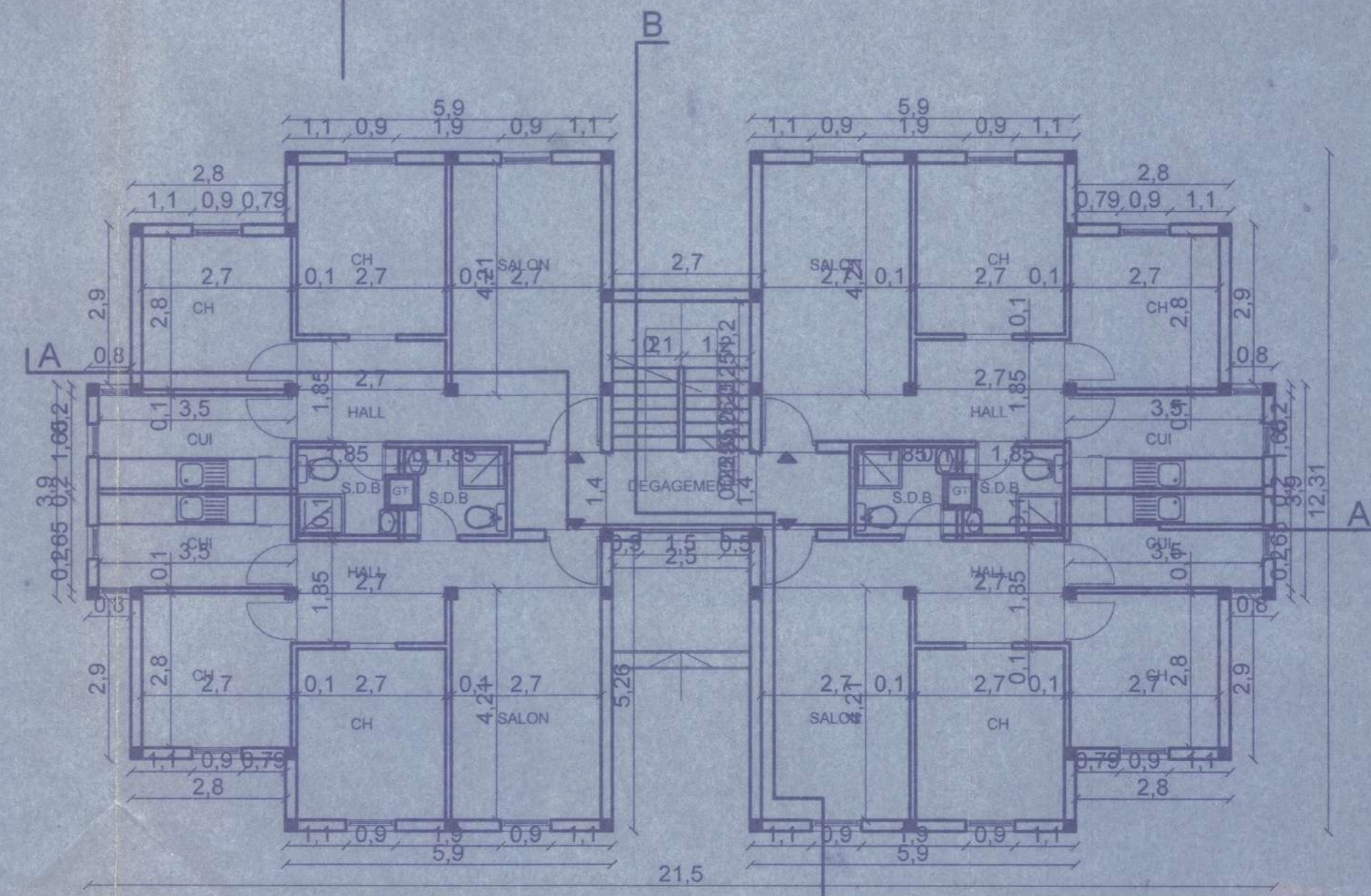
COUPE A-A



FONDATIONS



REZ DE CHAUSSEE



1er, 2 et 3eme ETAGE