

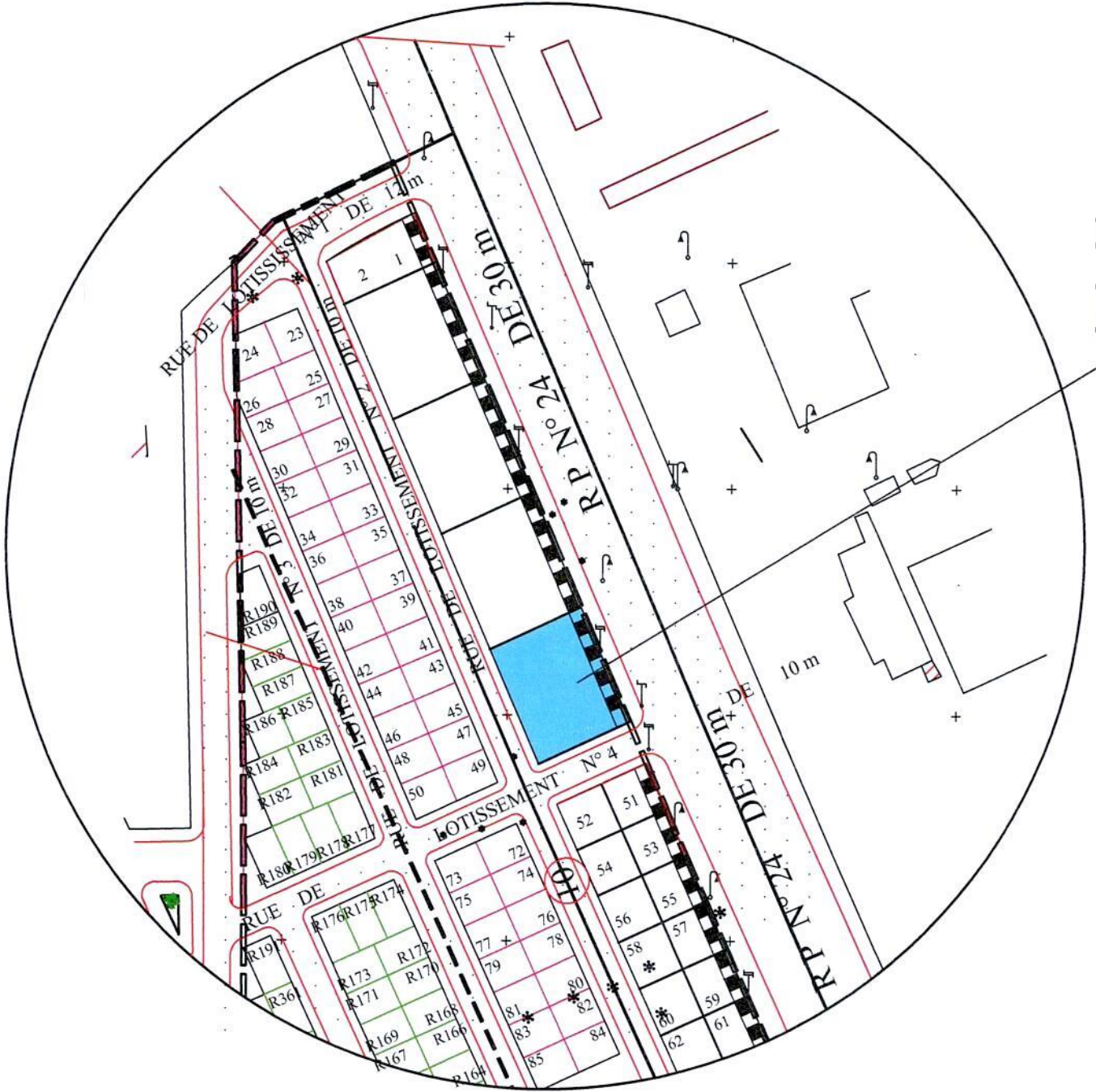
ROYAUME DU MAROC
MINISTRE DE L'HABITAT, DE L'URBANISME
ET DE L'AMENAGEMENT DE L'ESPACE
AL OMRANE FES

CONSTRUCTION DE LOGEMENTS SOCIAUX
LOTISSEMENT MOULAY ISMAIL
SEFROU

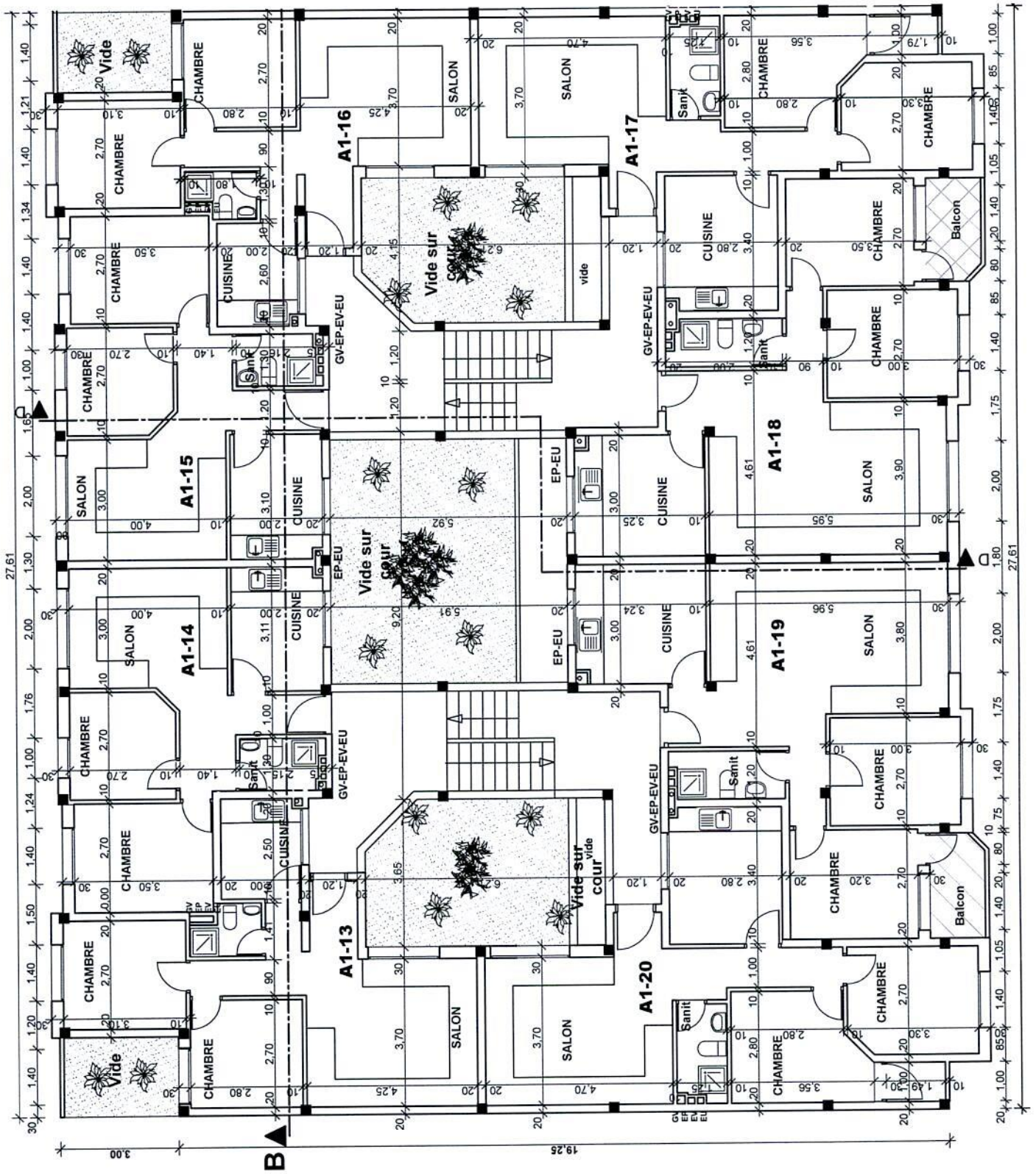


FASCICULE DE REPERAGE
ILOTS A ET B

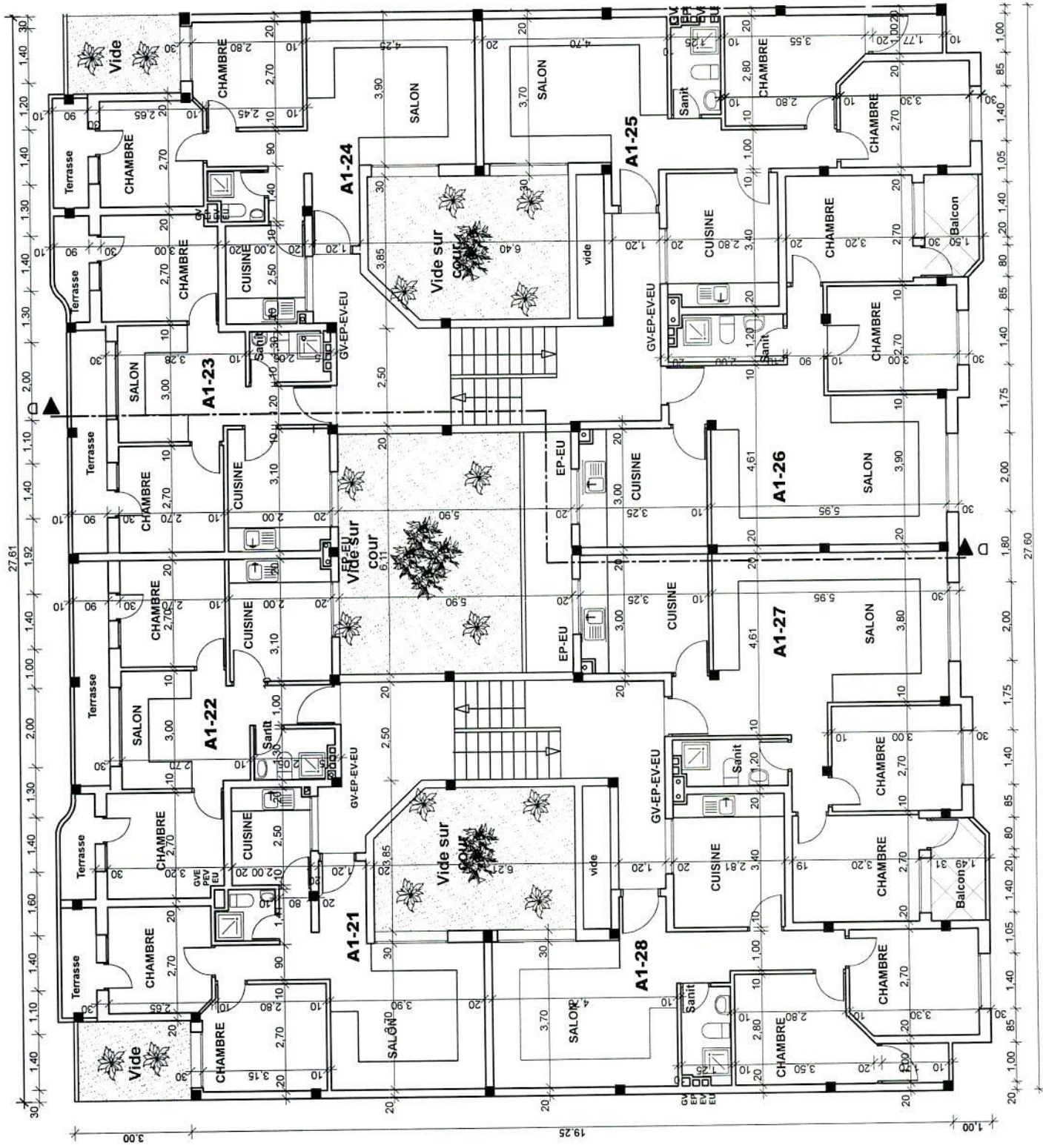
Groupement d'Architectes:
Mohammed RAIS
Azzeddine KALAI TLAMSANI
8, Rue Ahmed Loukili-Fès
Té: 035 65 08 43 / Fax: 035 93 02 10
E-Mail : arcao84@yahoo.fr



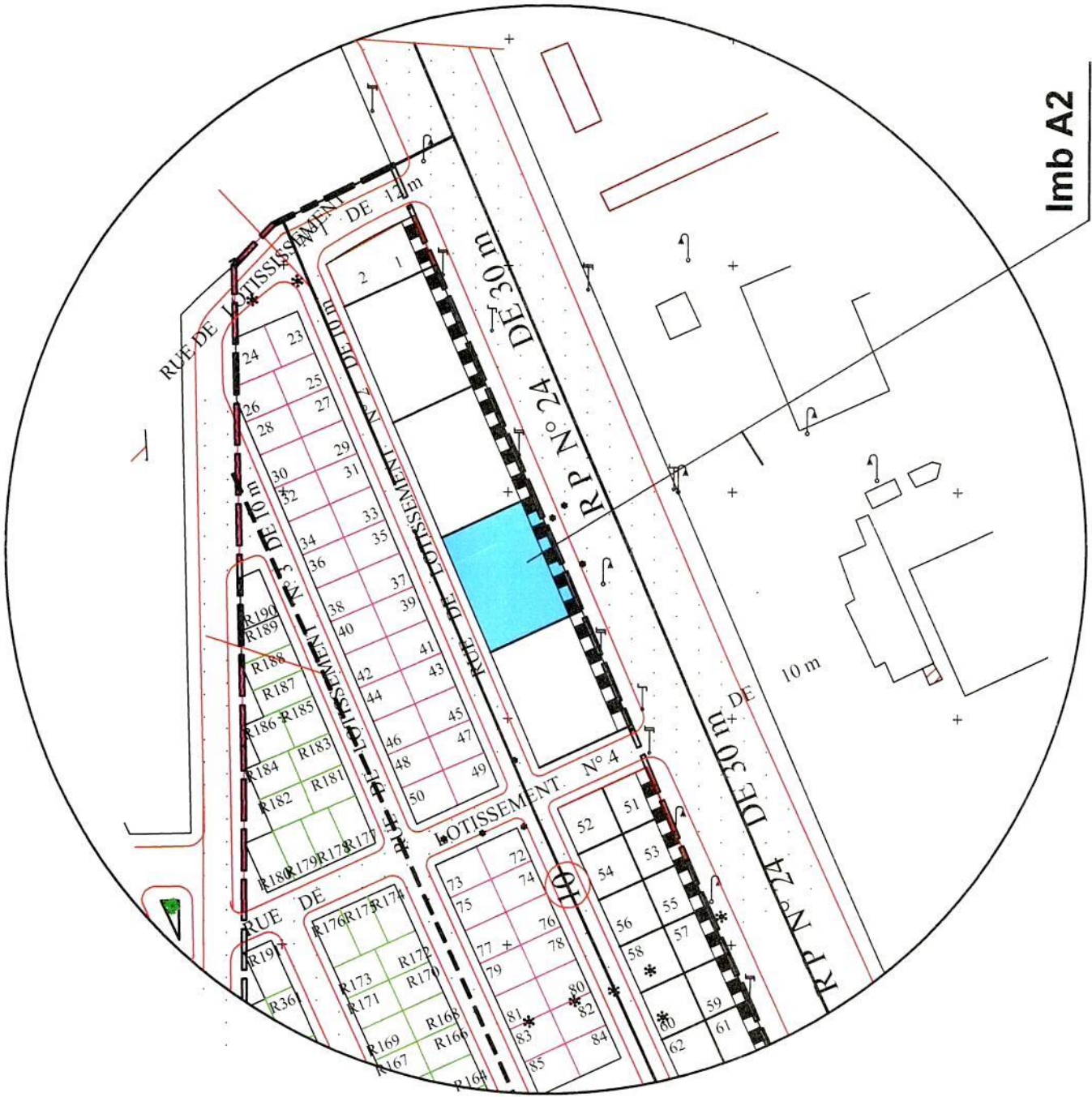
Imb A1



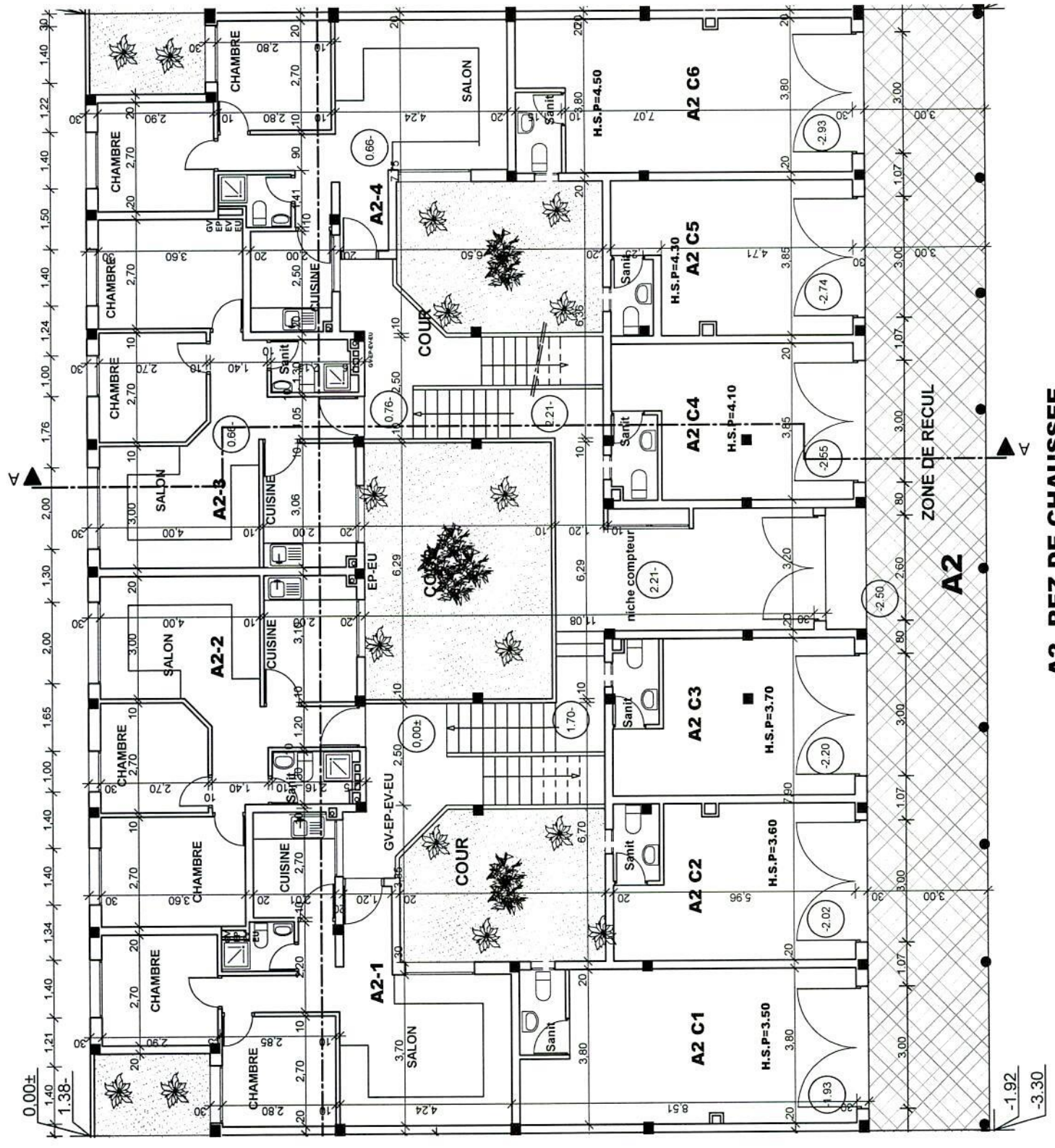
A1 2ème ETAGE



A1 3ème ETAGE

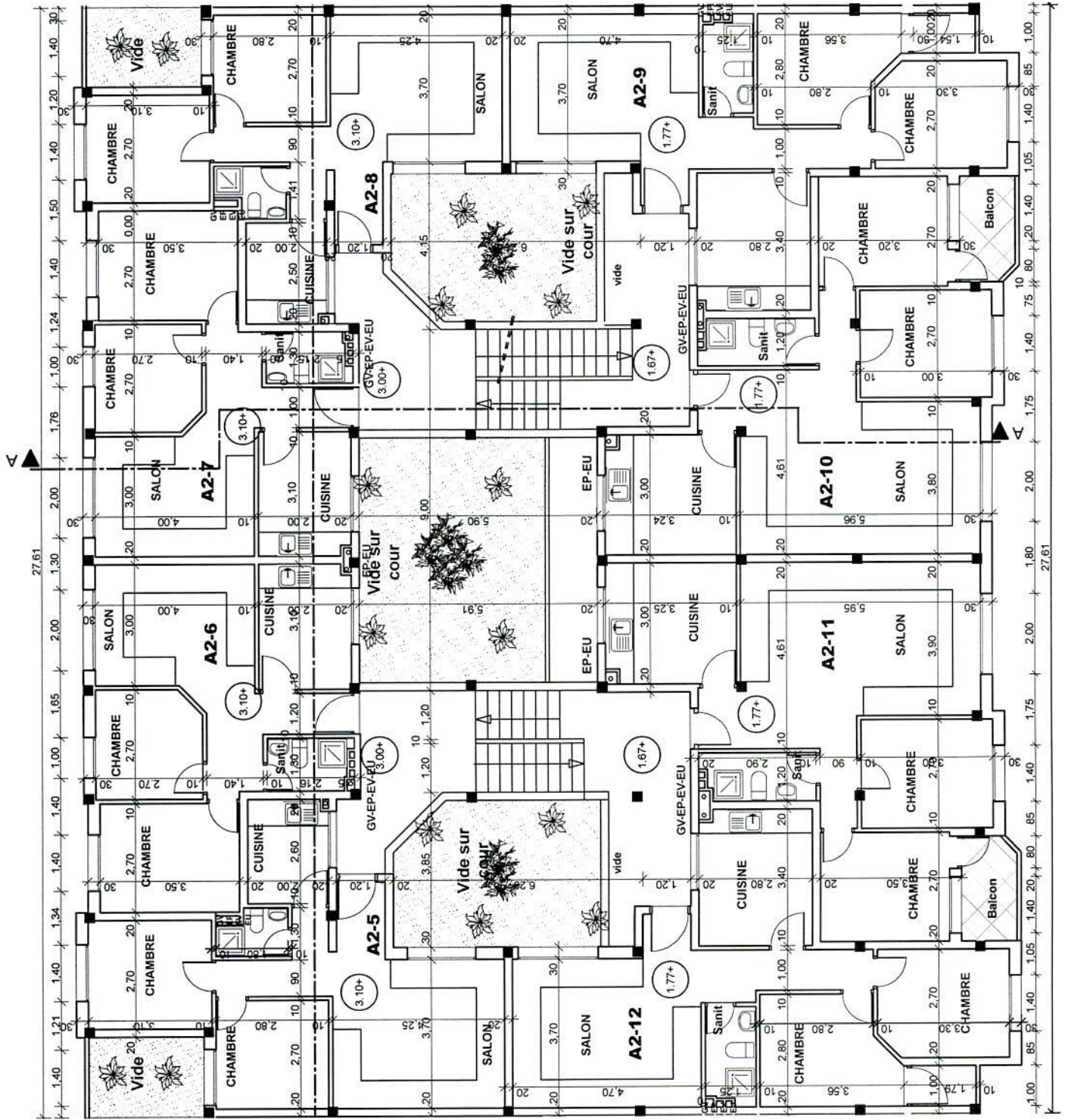


Imb A2

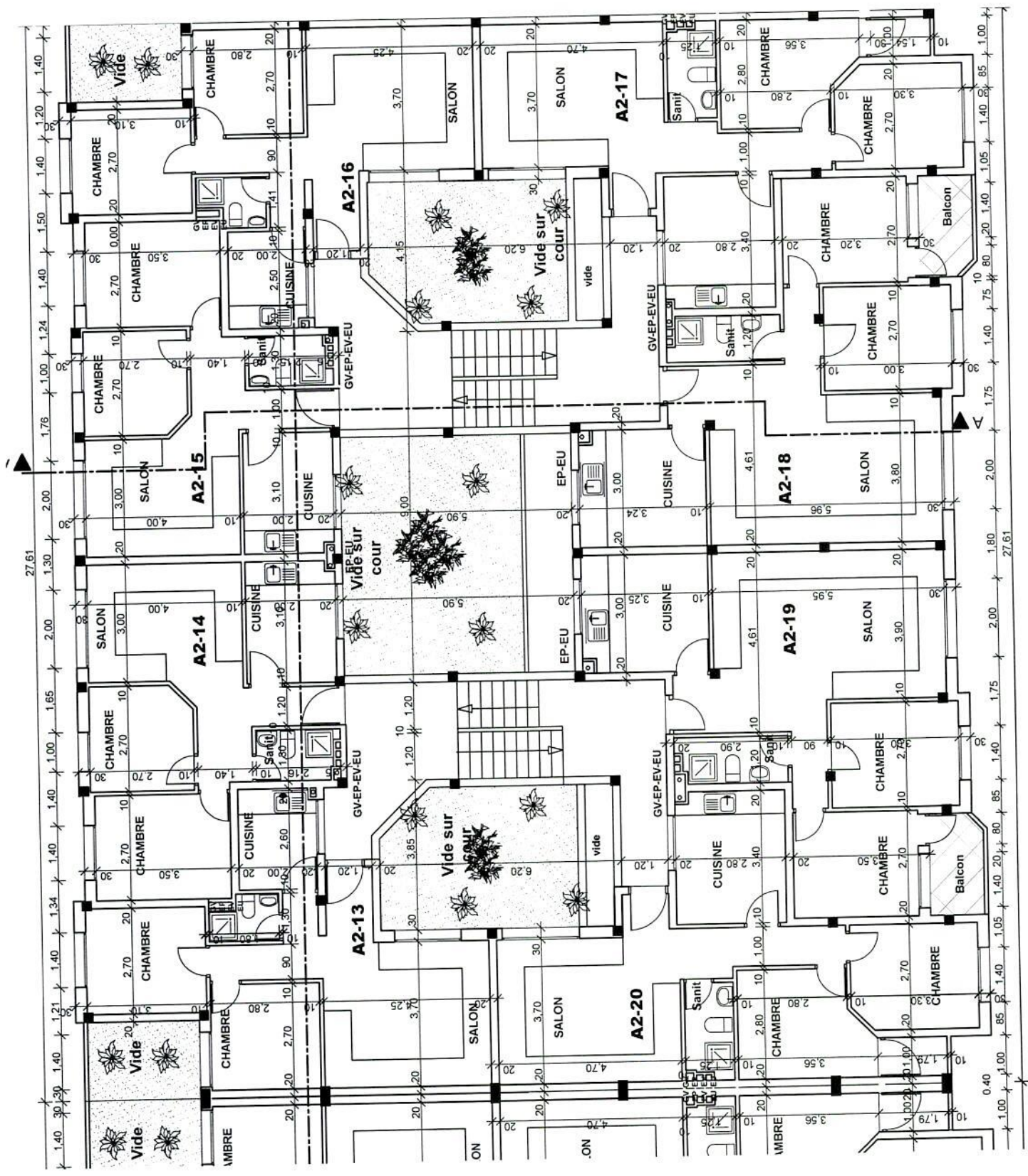


A2 REZ DE CHAUSSEE

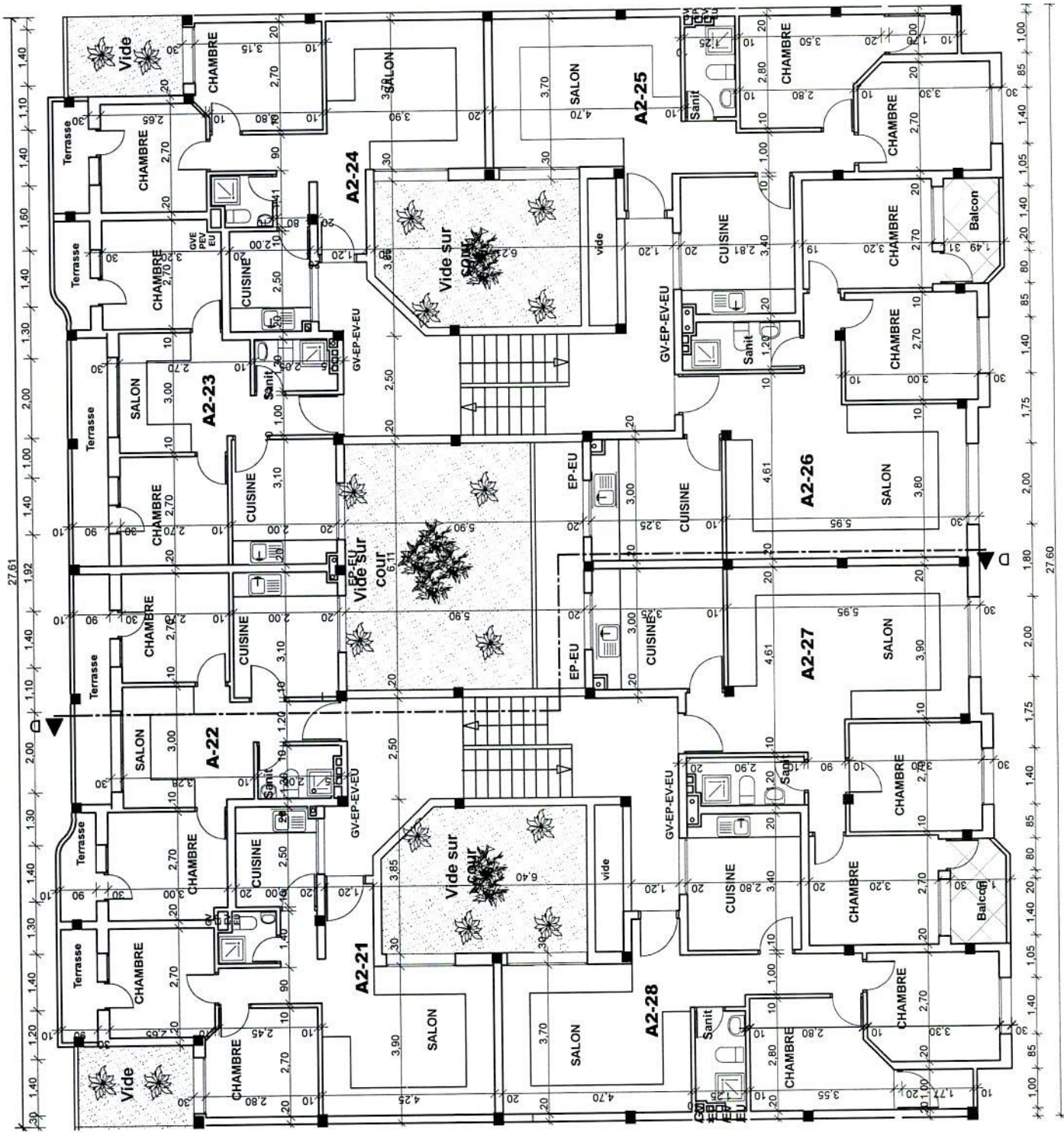
-1.92
-3.30



A2 1er ETAGE

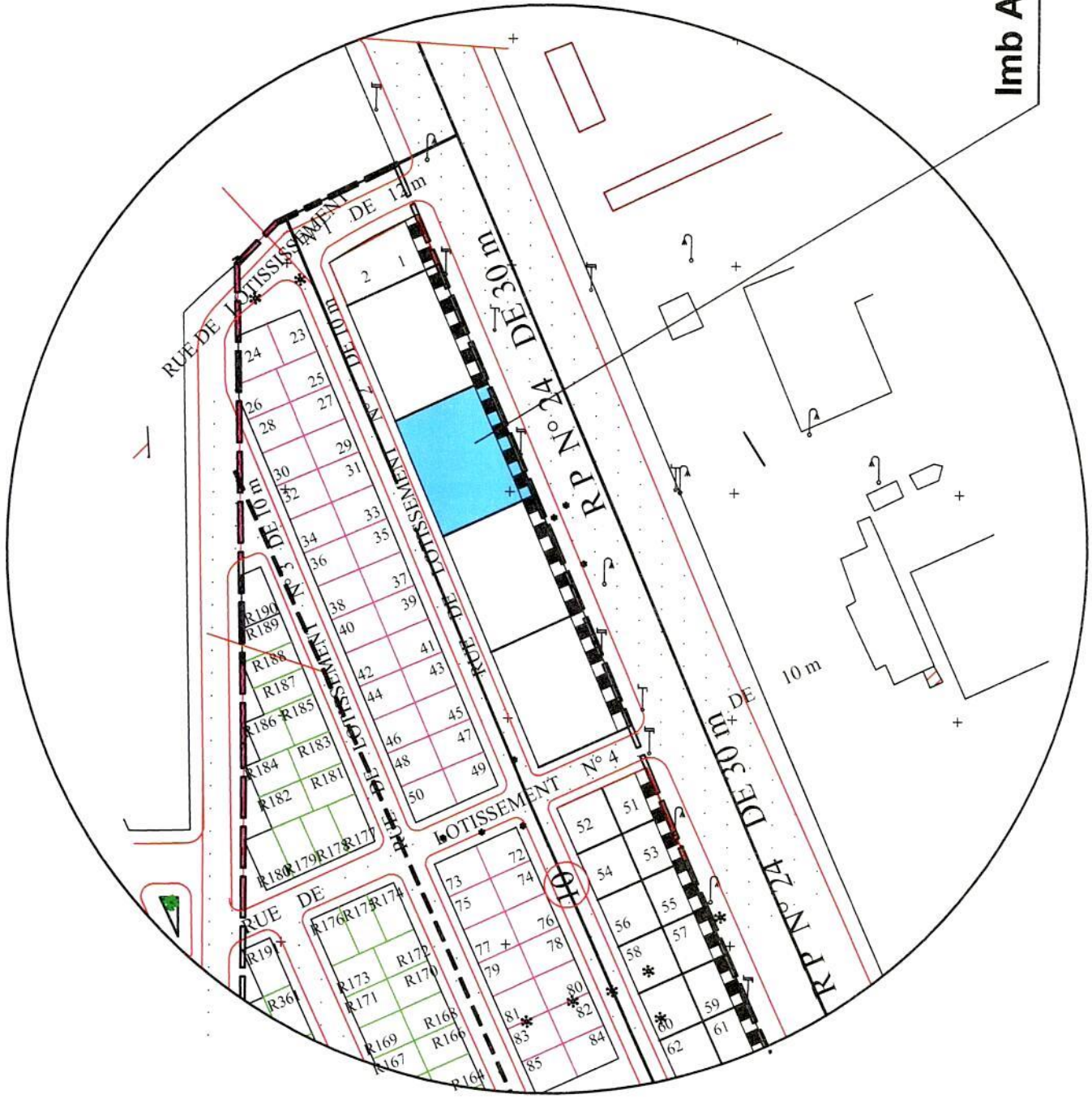


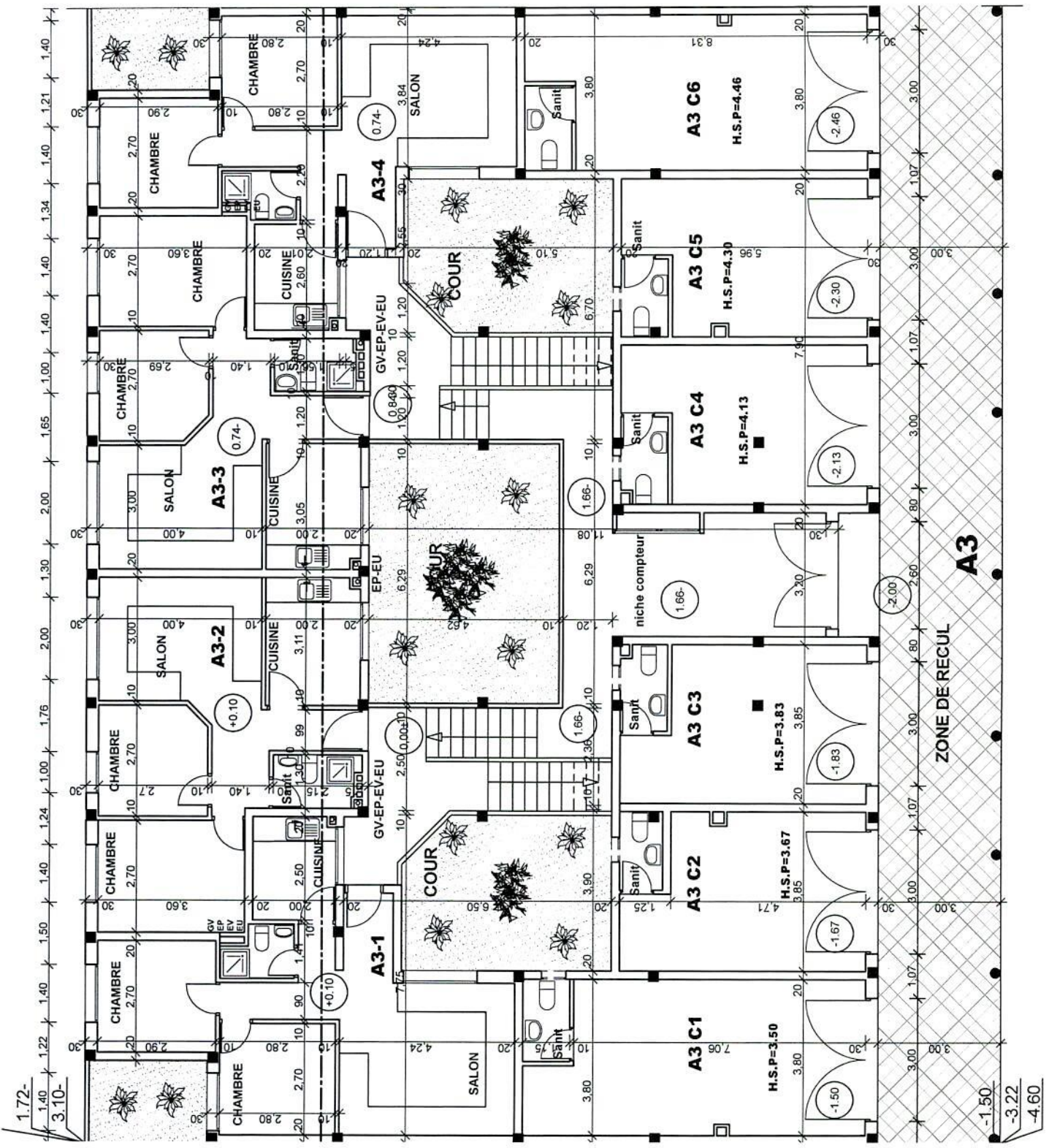
A2 2ème ETAGE



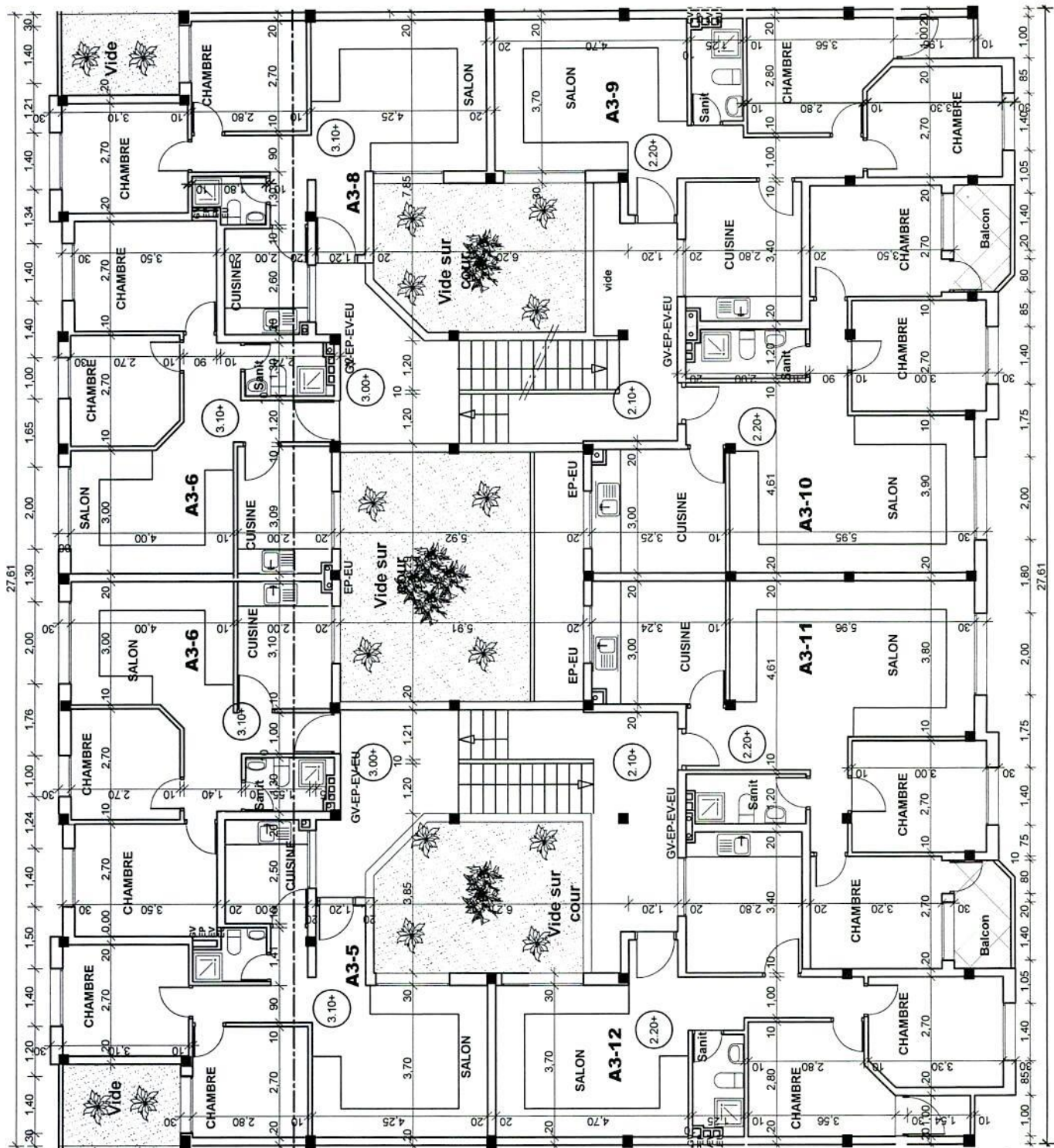
A2 3ème ETAGE

Imb A3

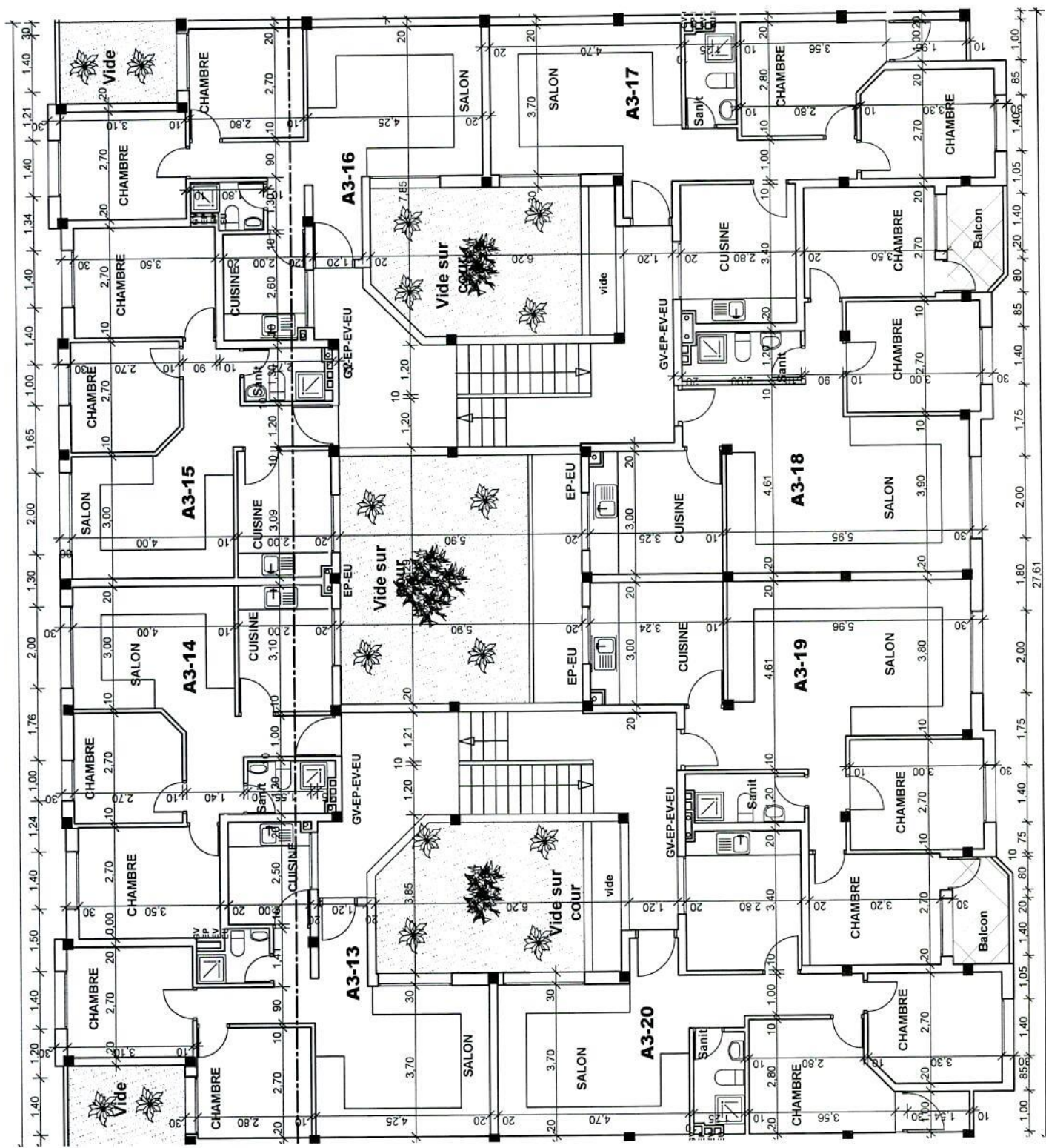




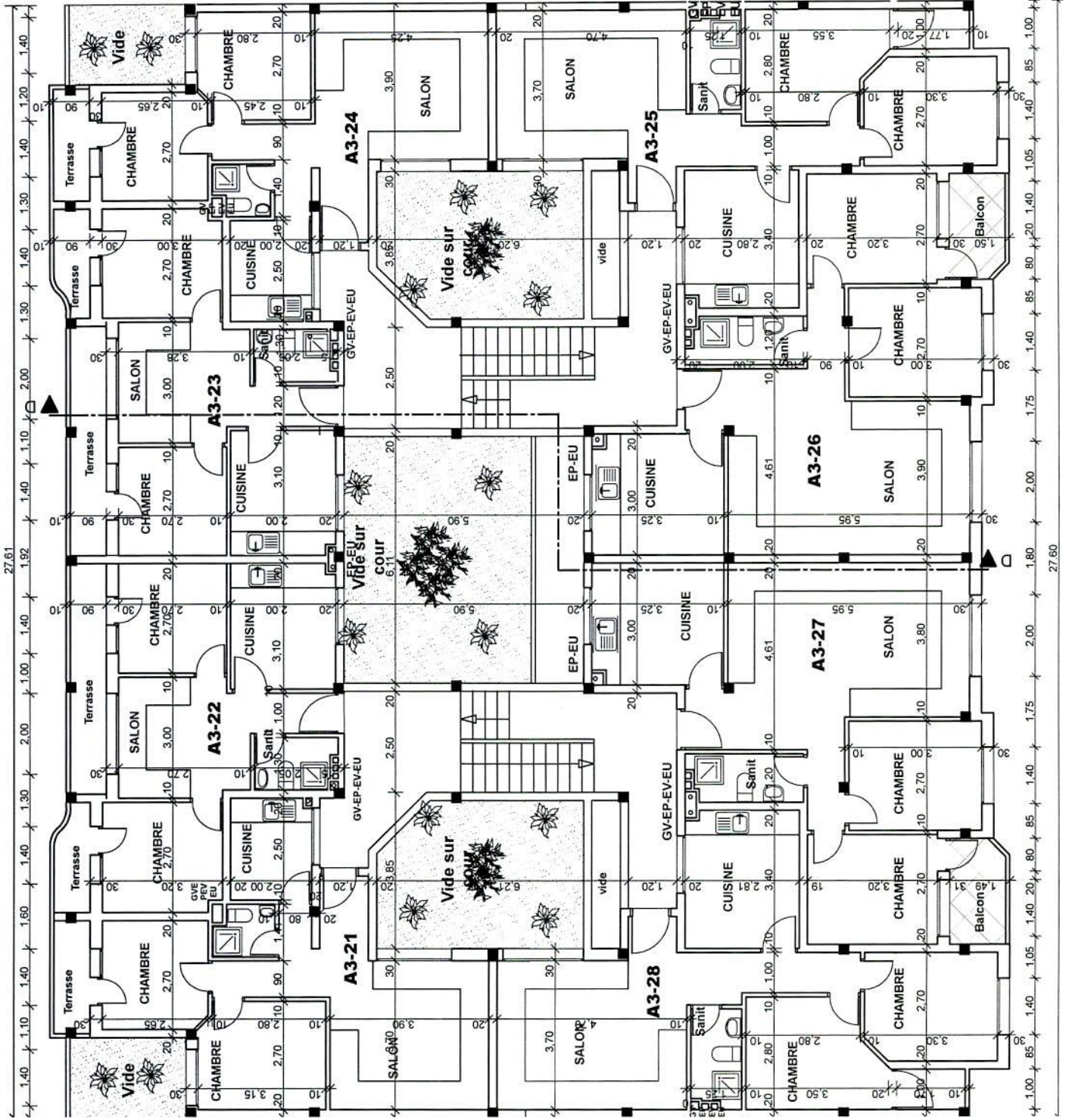
A3 REZ DE CHAUSSEE



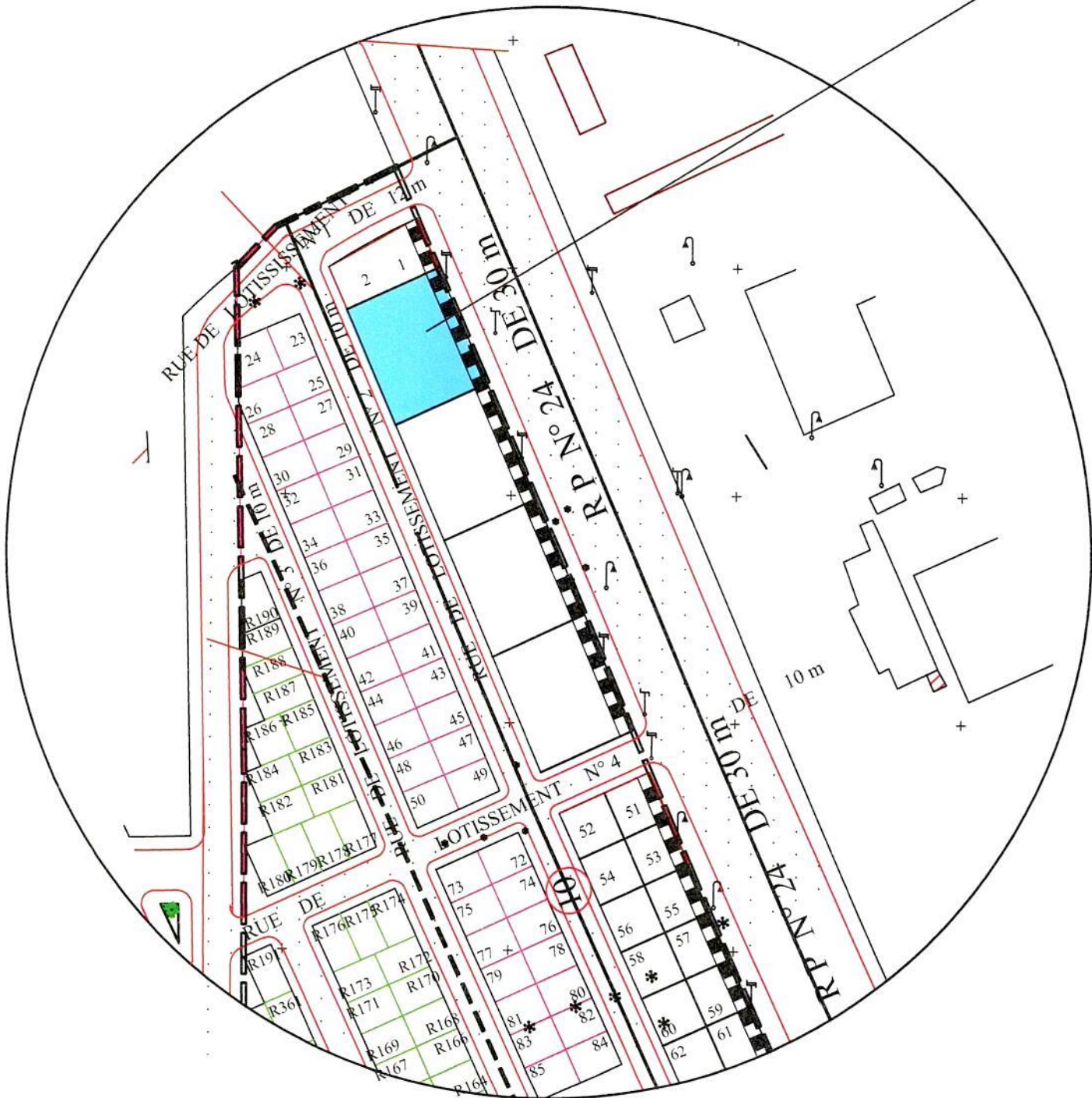
A3 1er ETAGE

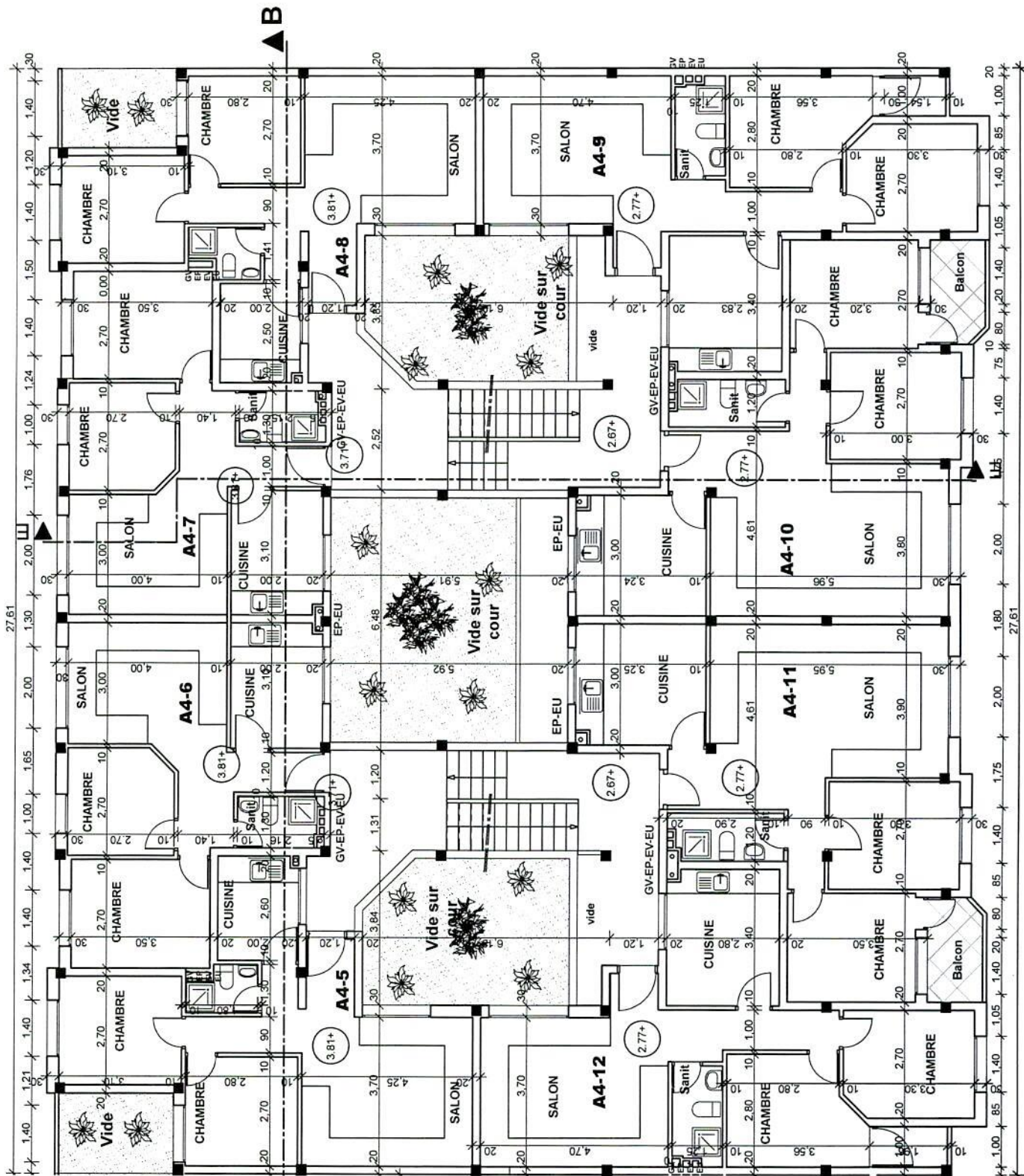


A3 2ème ETAGE

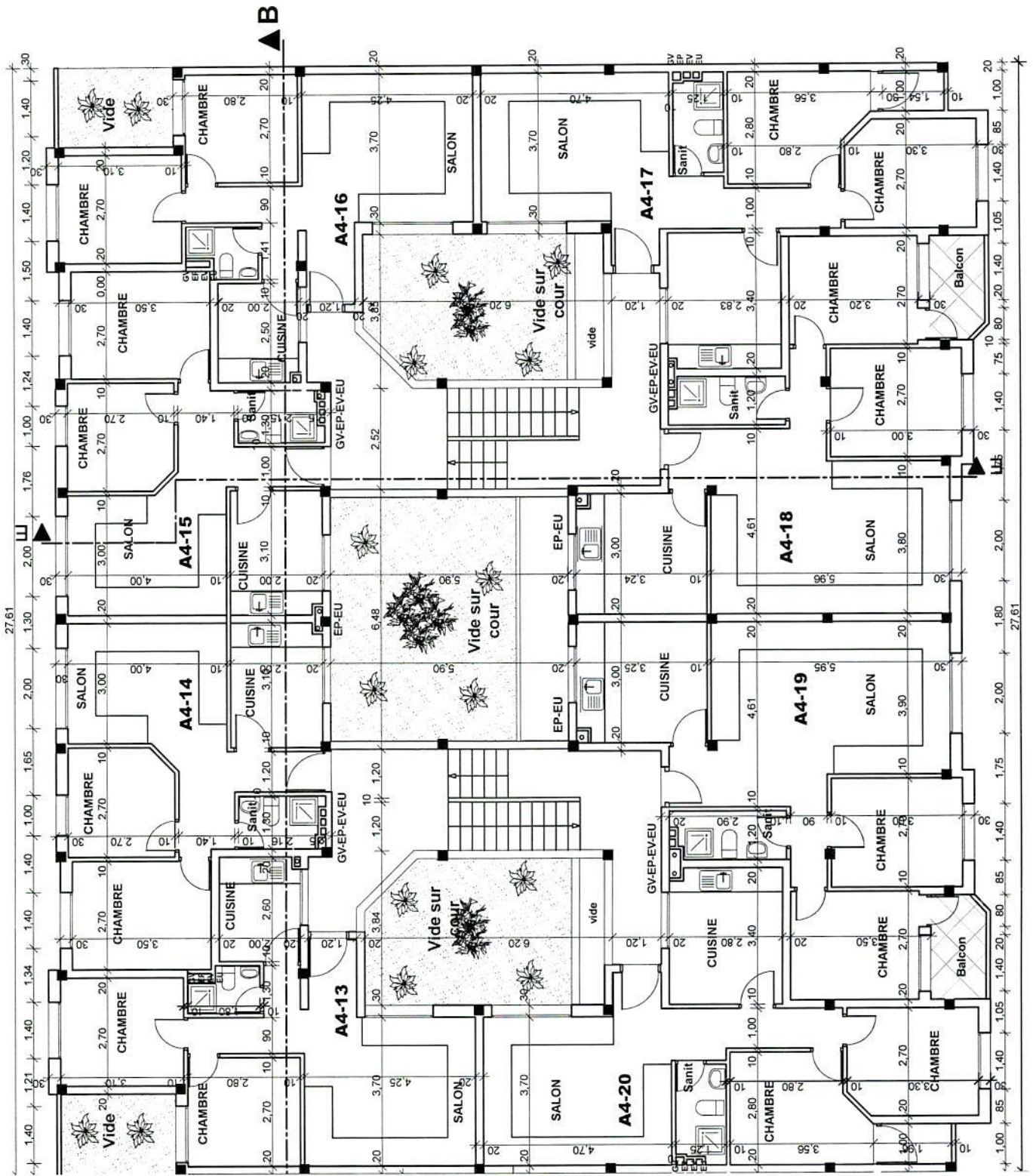


A3 3ème ETAGE

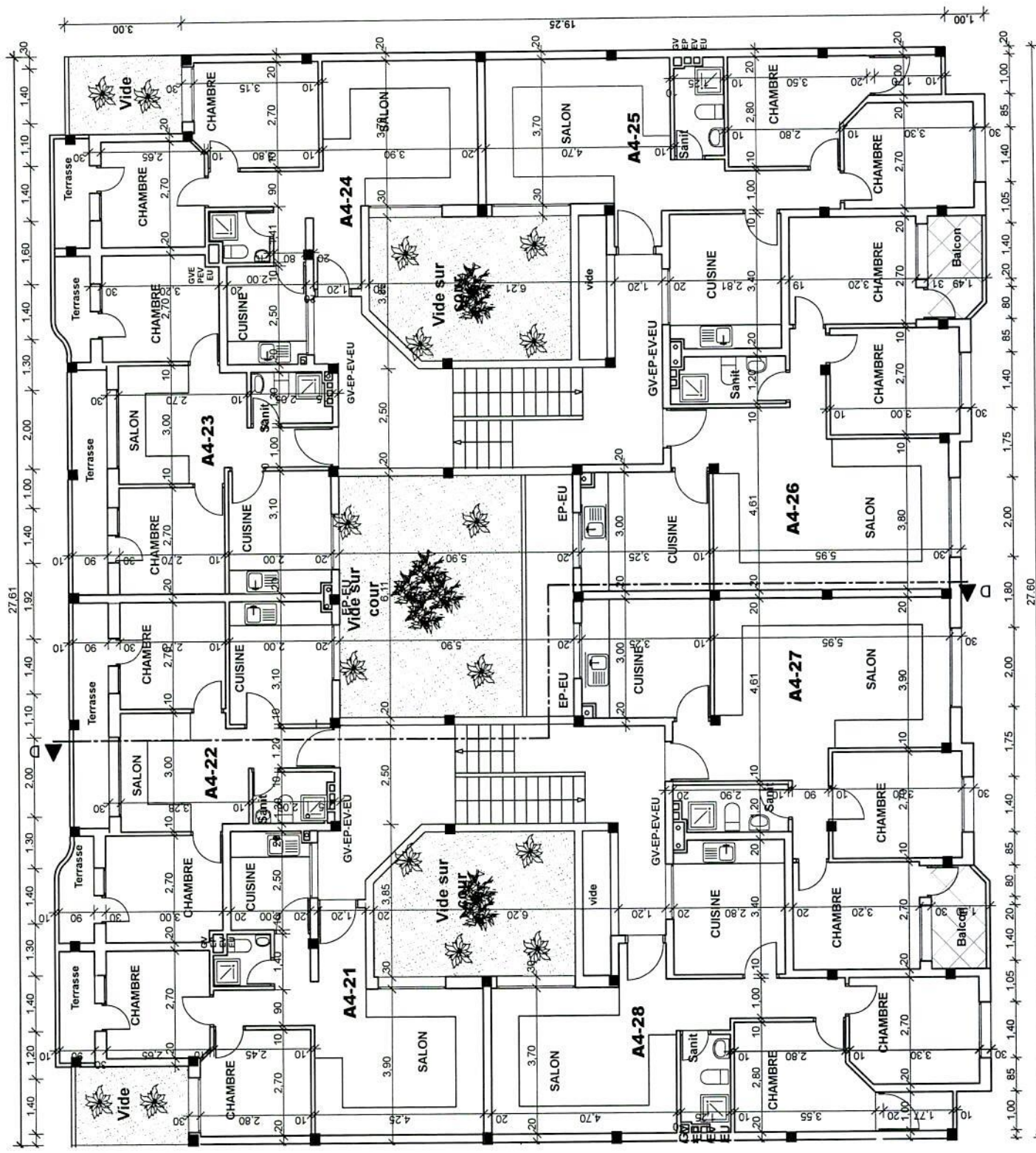




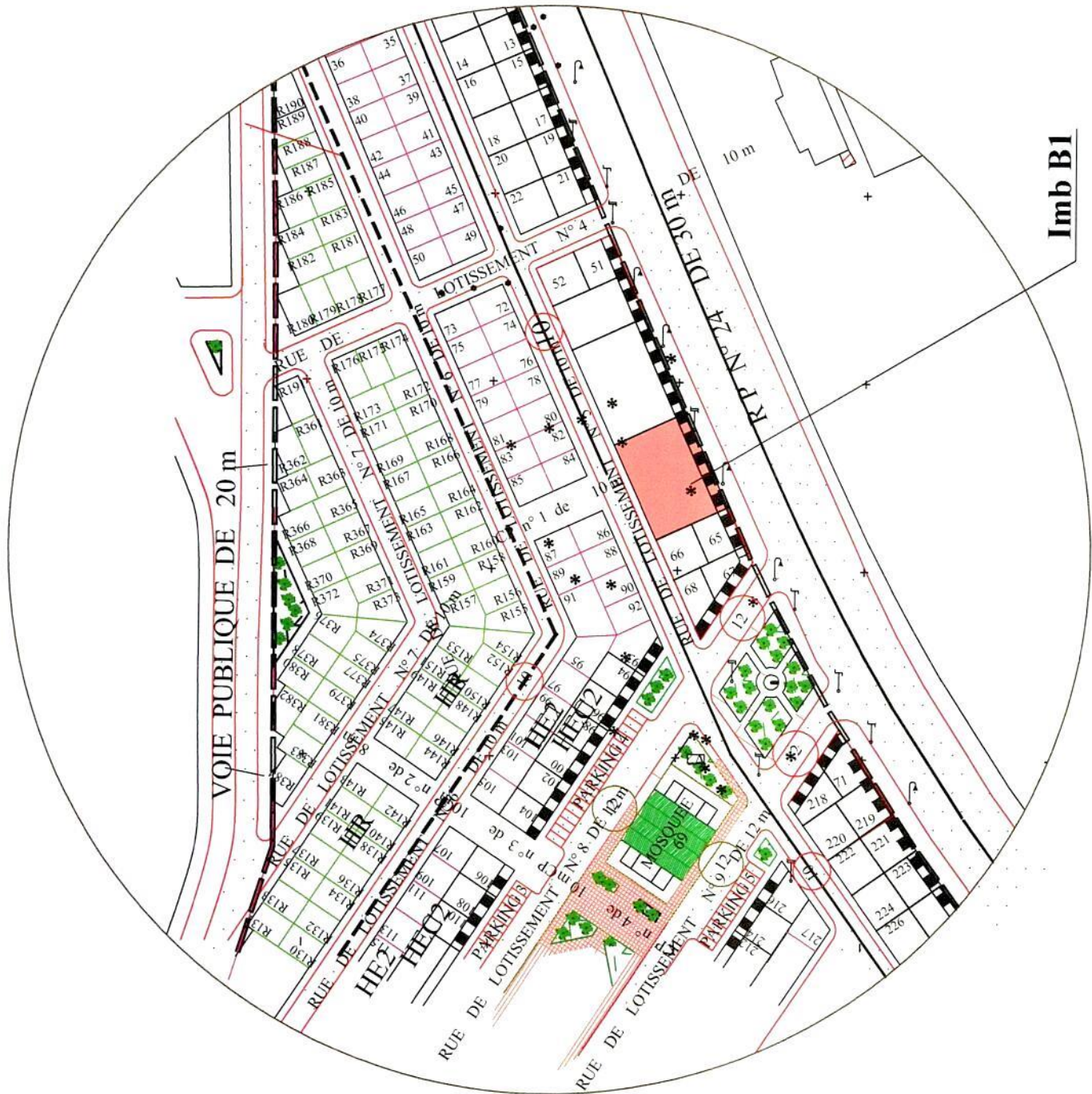
A4 1er ETAGE



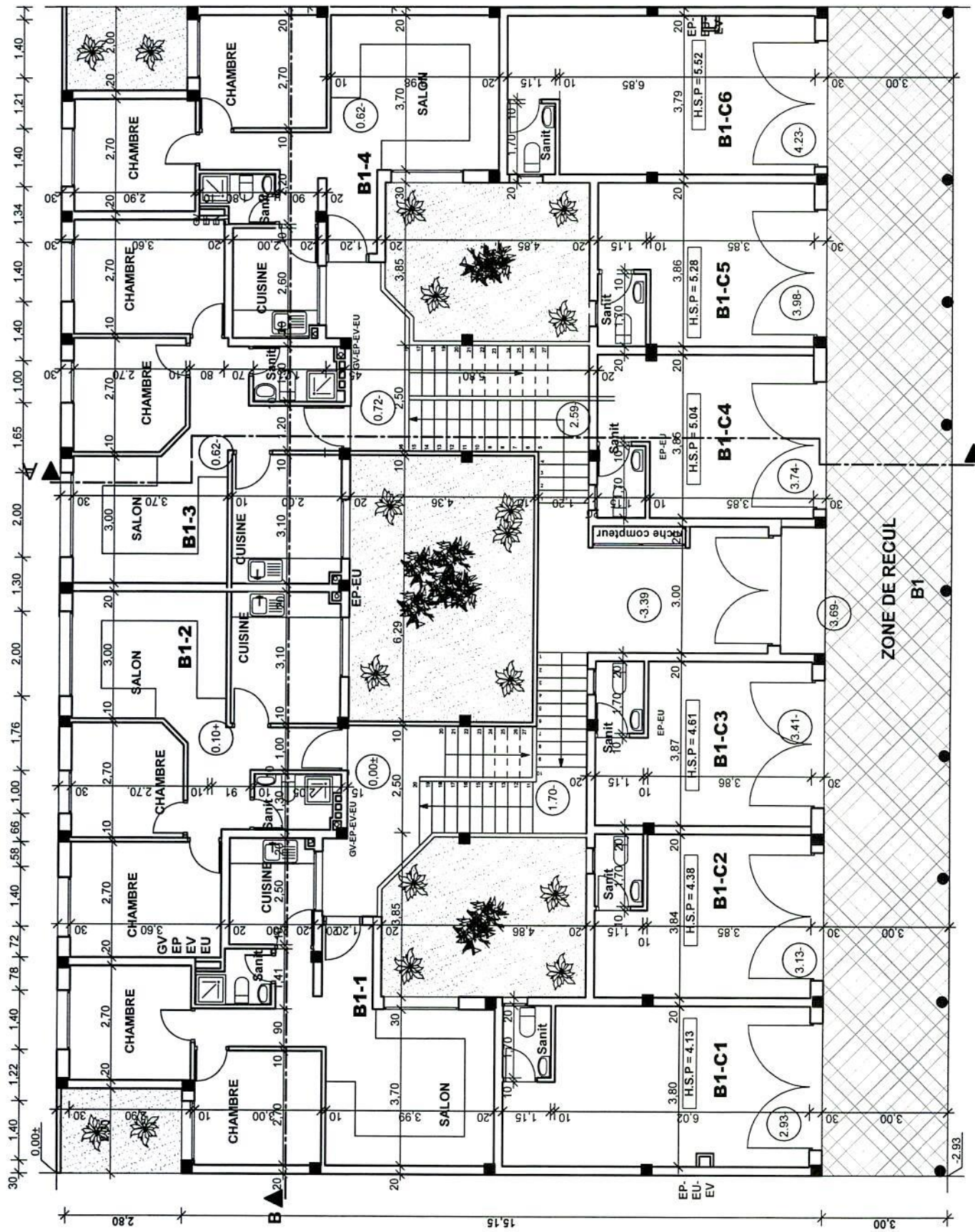
A4 2ème ETAGE



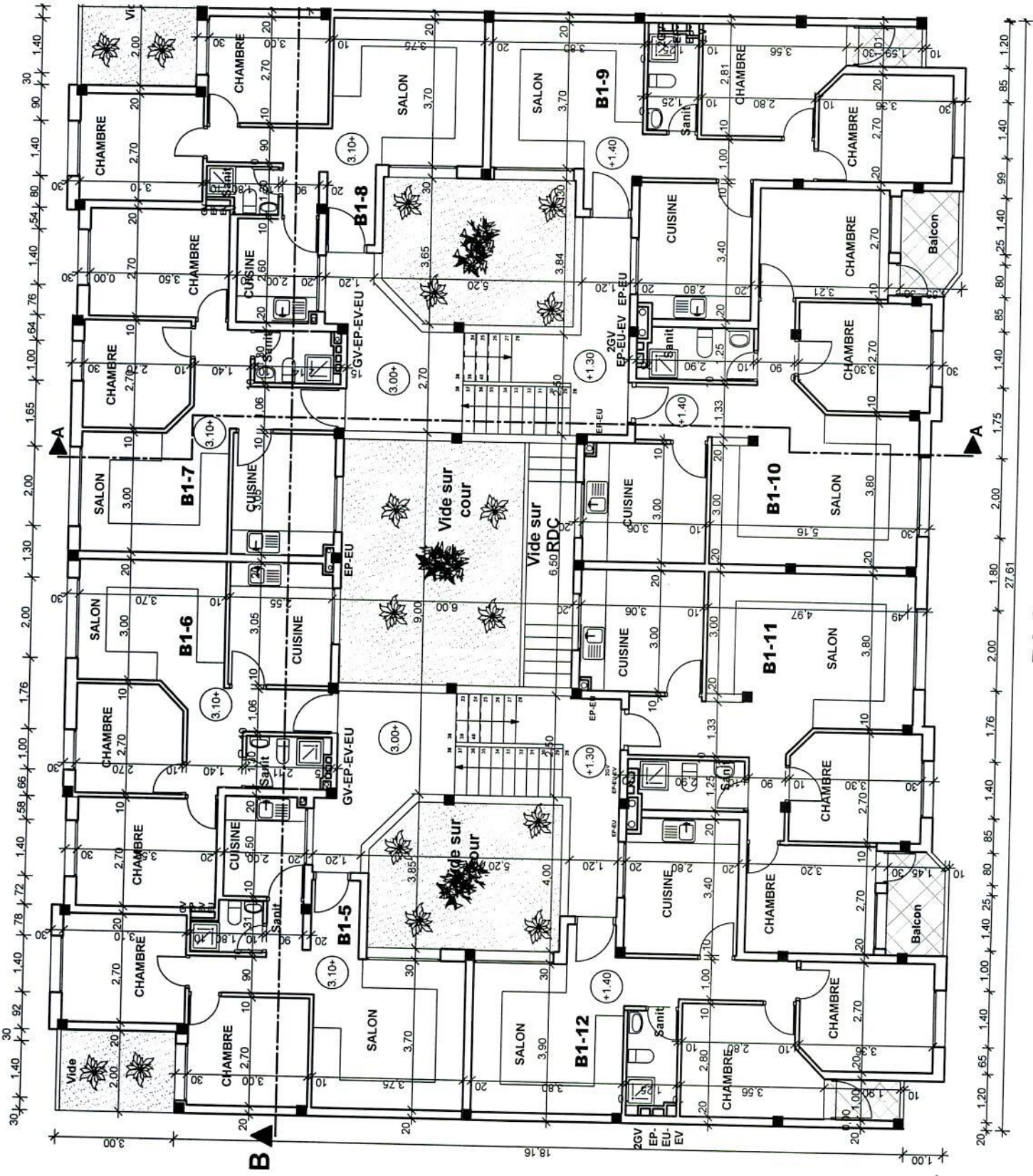
A4 3ème ETAGE



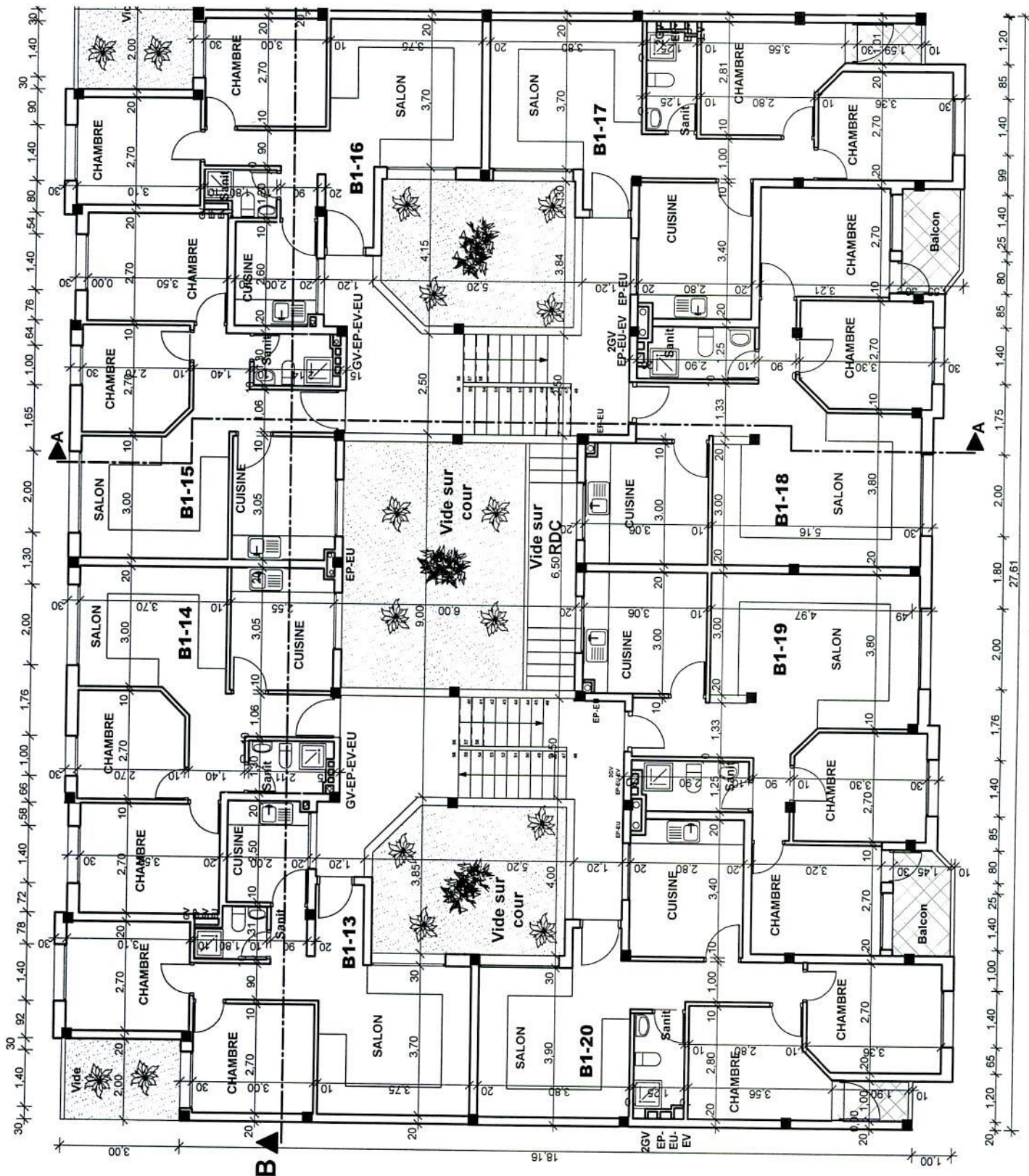
Imb B1



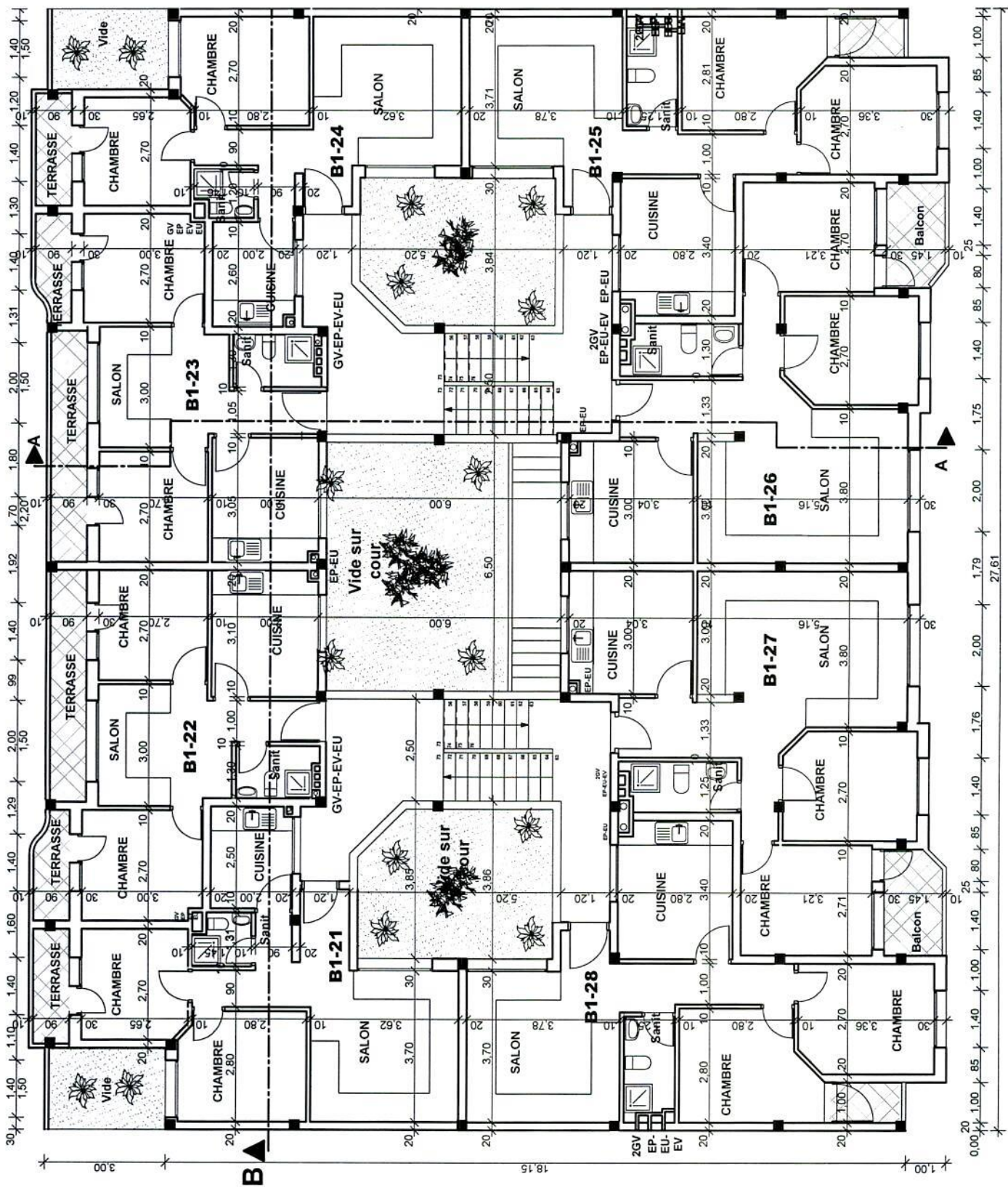
B1 REZ DE CHAUSSEE



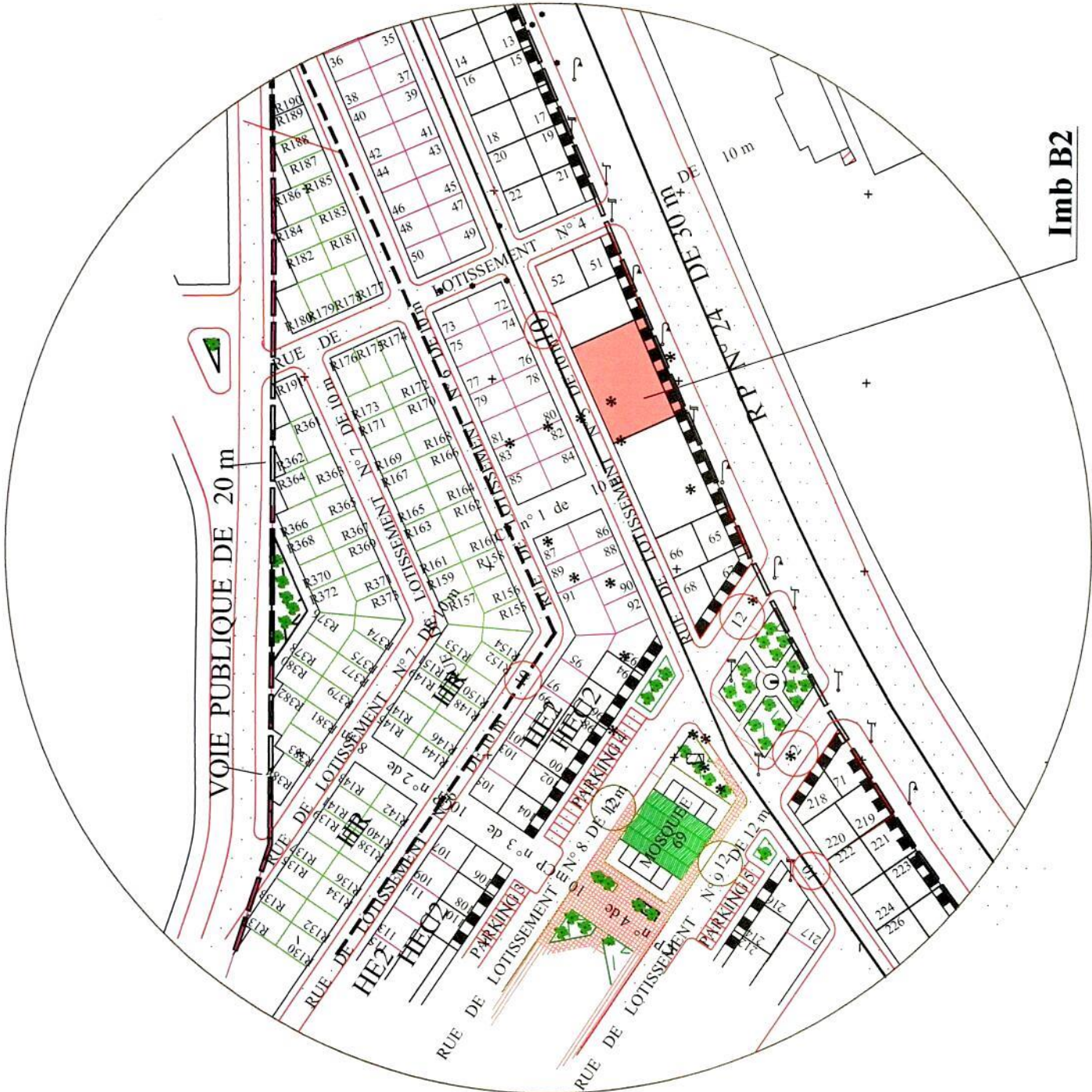
B1 1er ETAGE

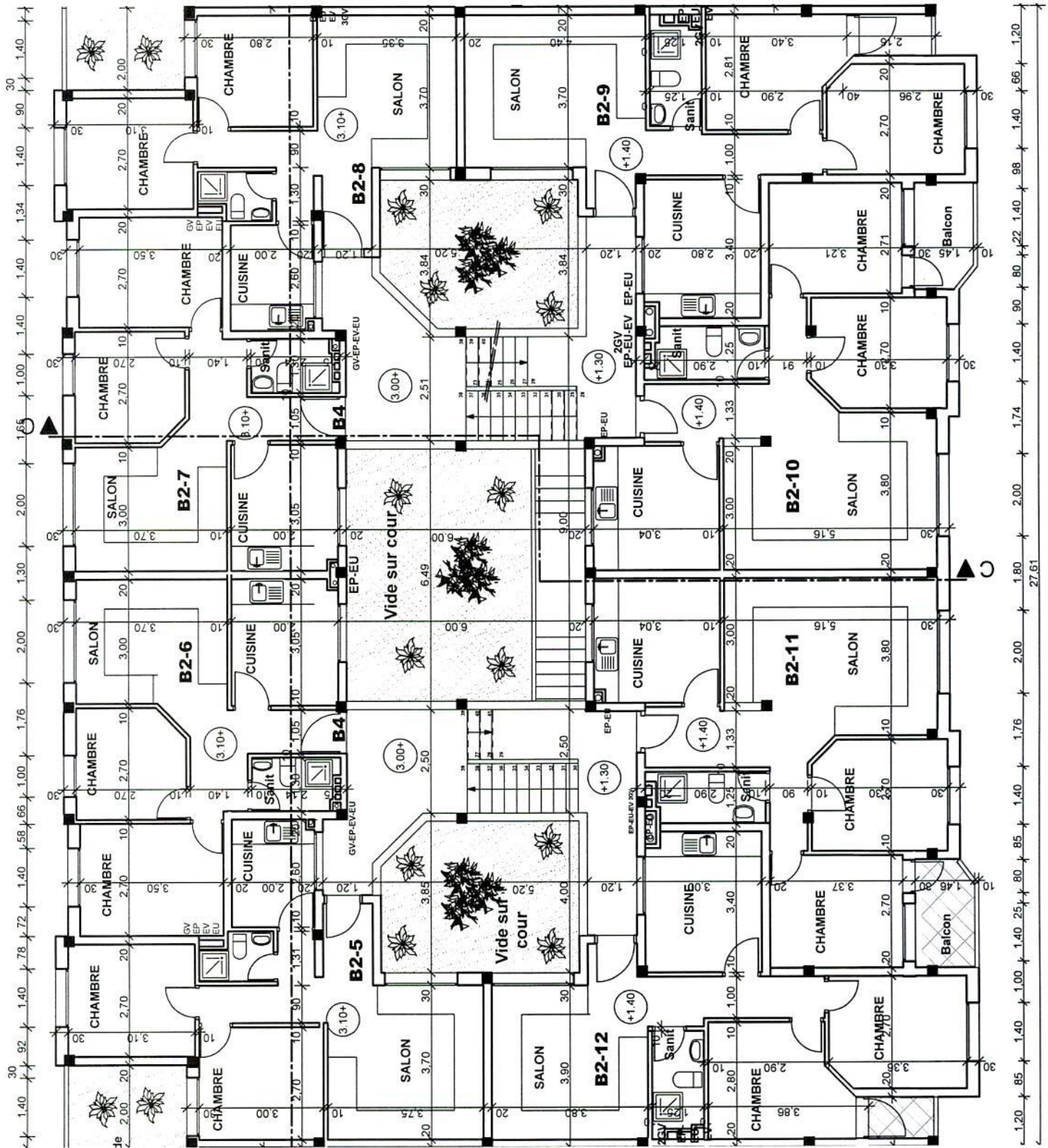


B1 2ème ETAGE

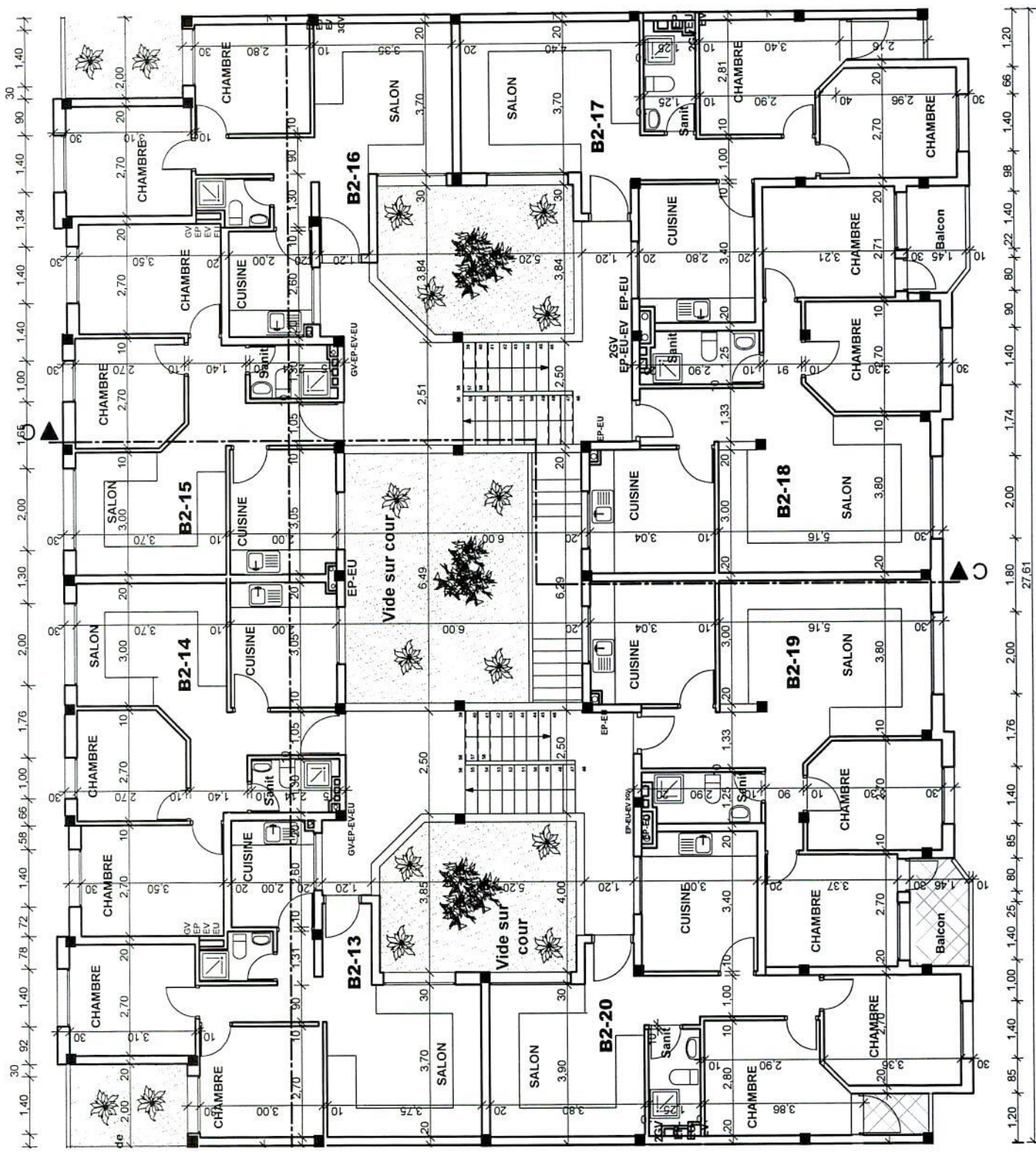


B1 3ème ETAGE

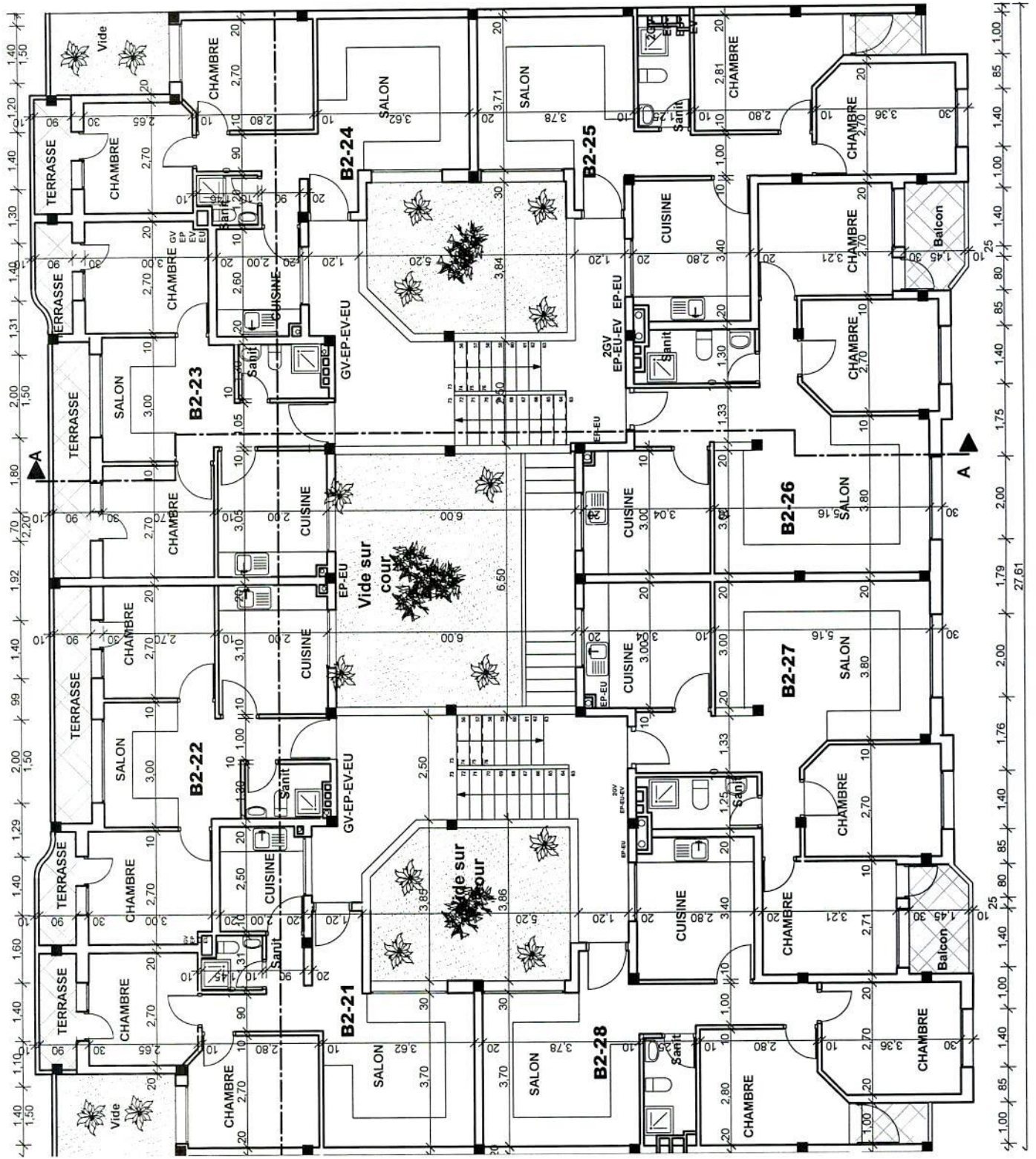




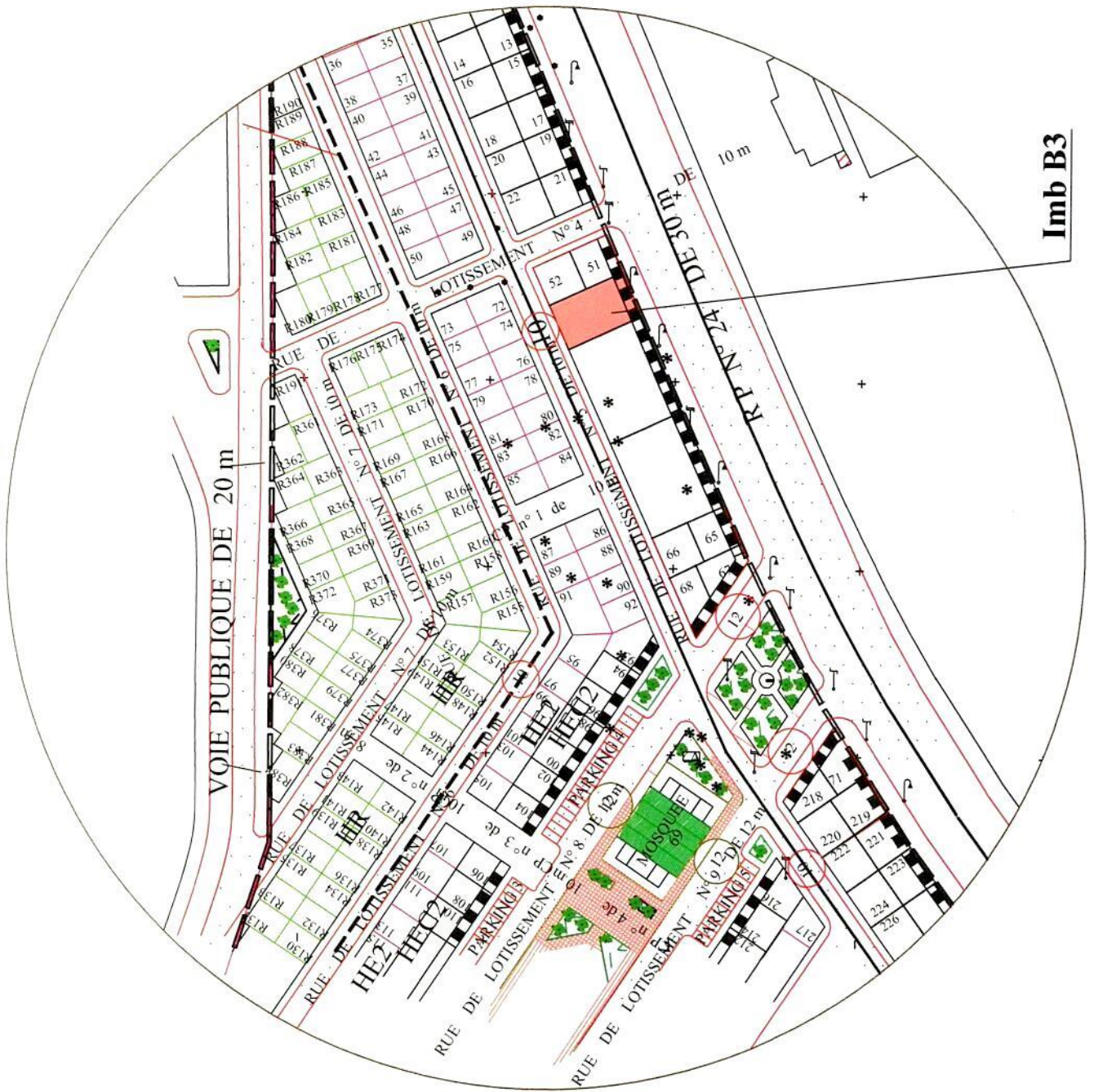
B2 1er ETAGE



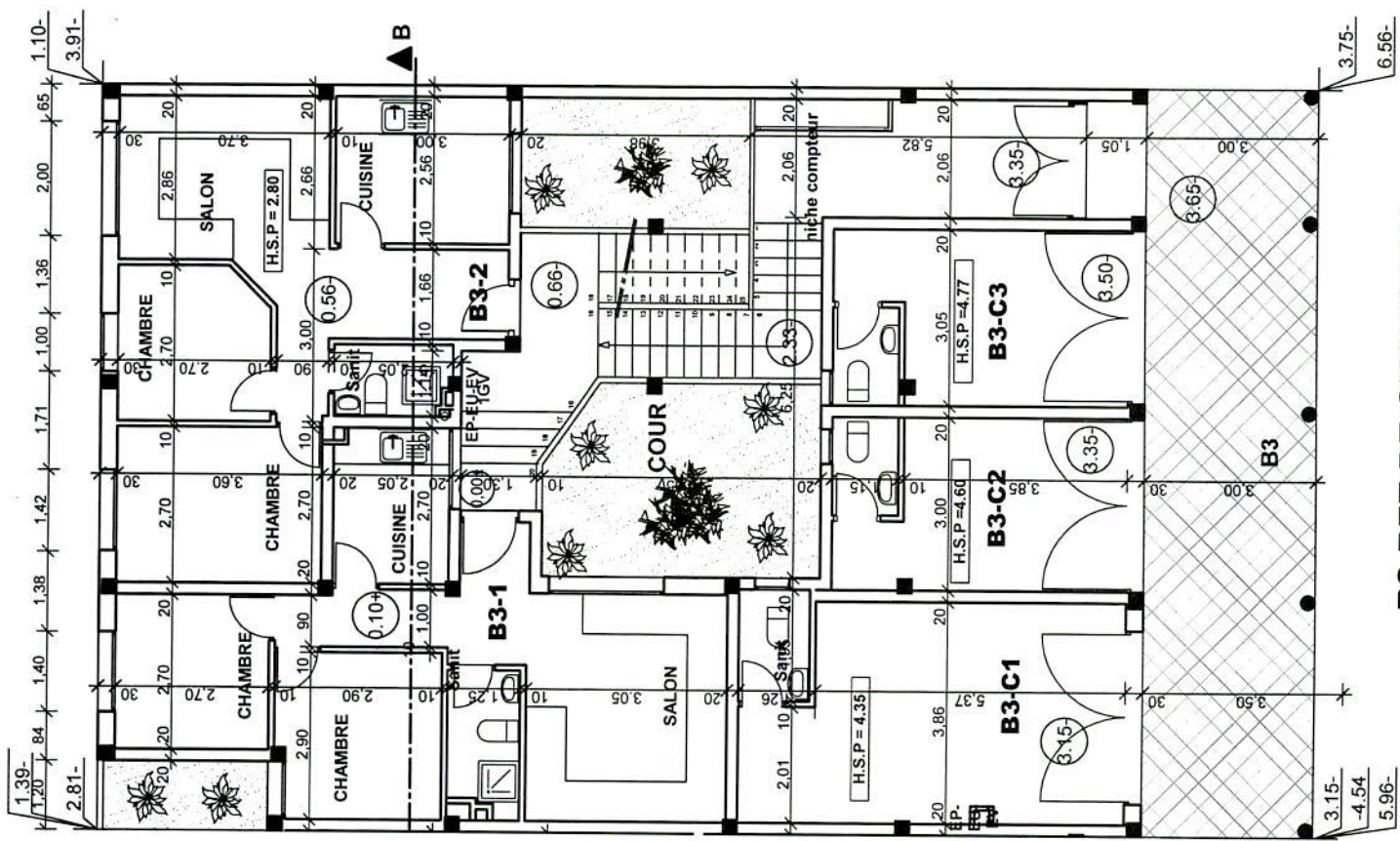
B2 2ème ETAGE



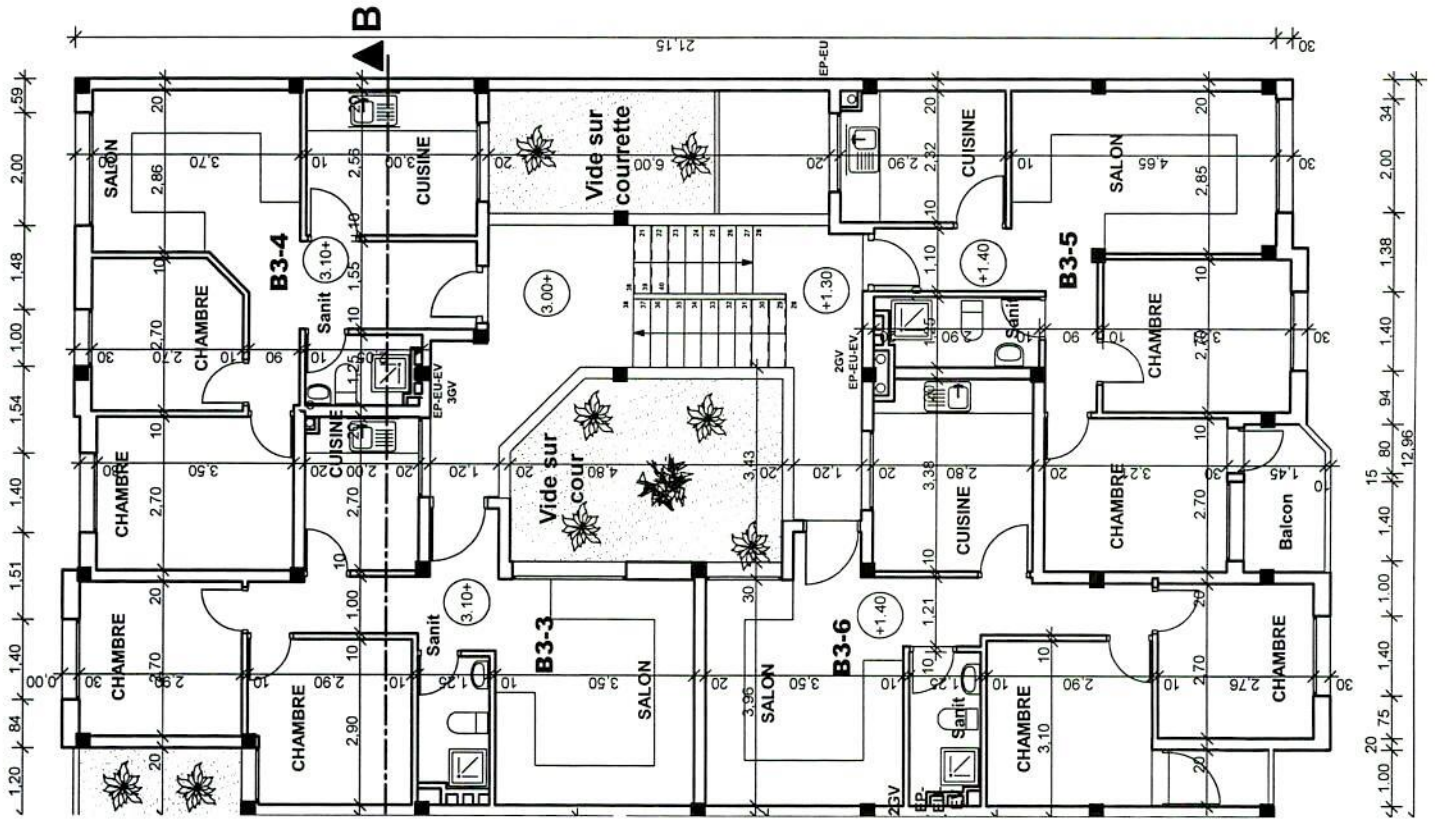
B2 3ème ETAGE



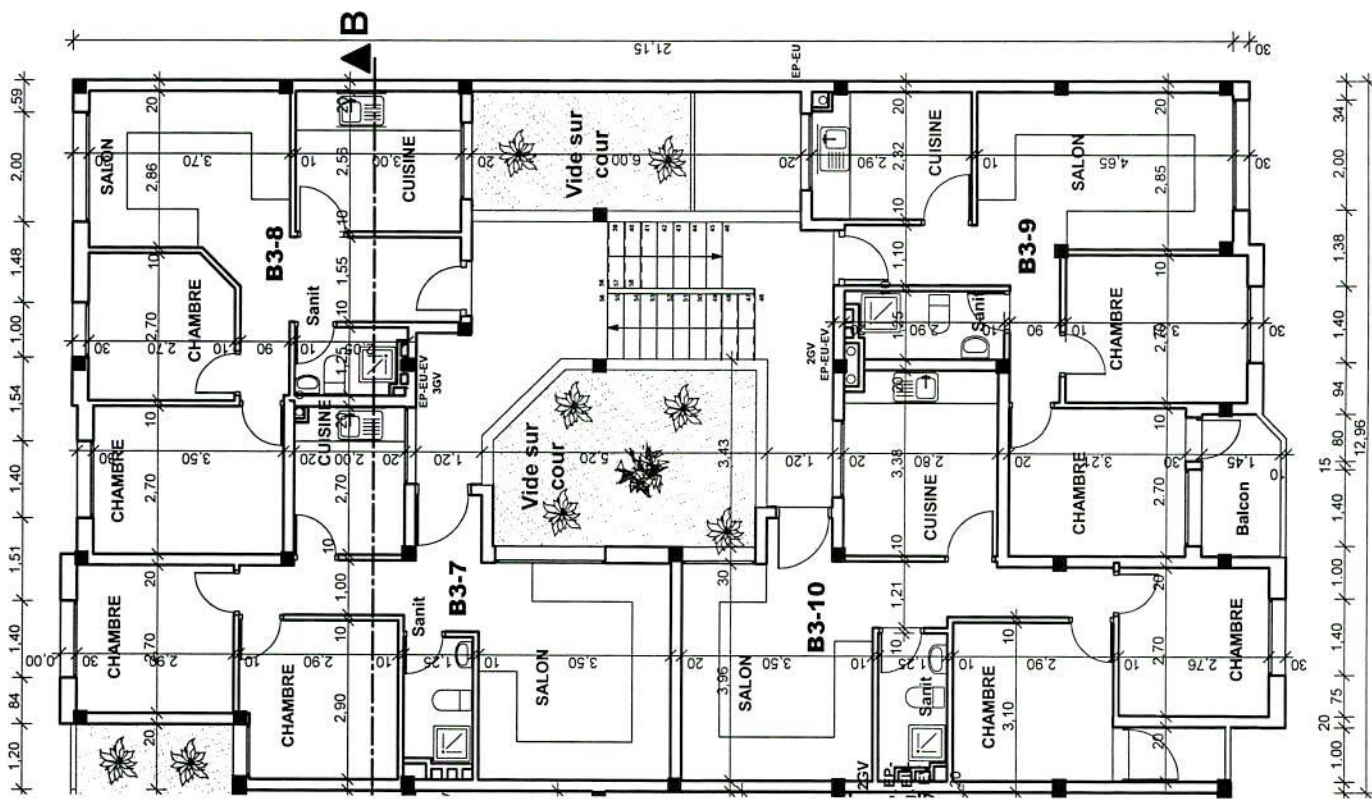
Imb B3



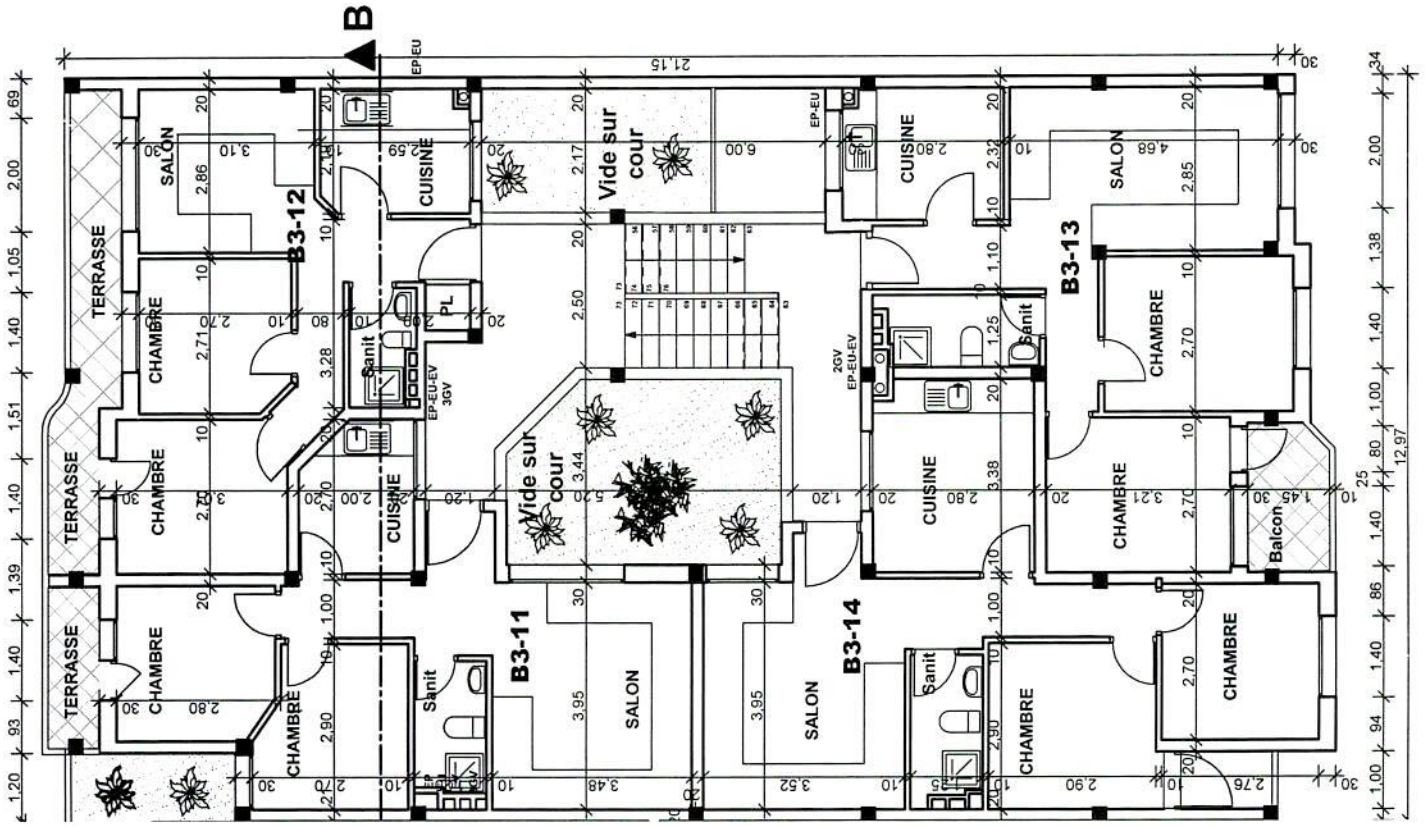
B3 REZ DE CHAUSSEE



B3 1er ETAGE



B3 2ème ETAGE



B3 3^{ème} ETAGE