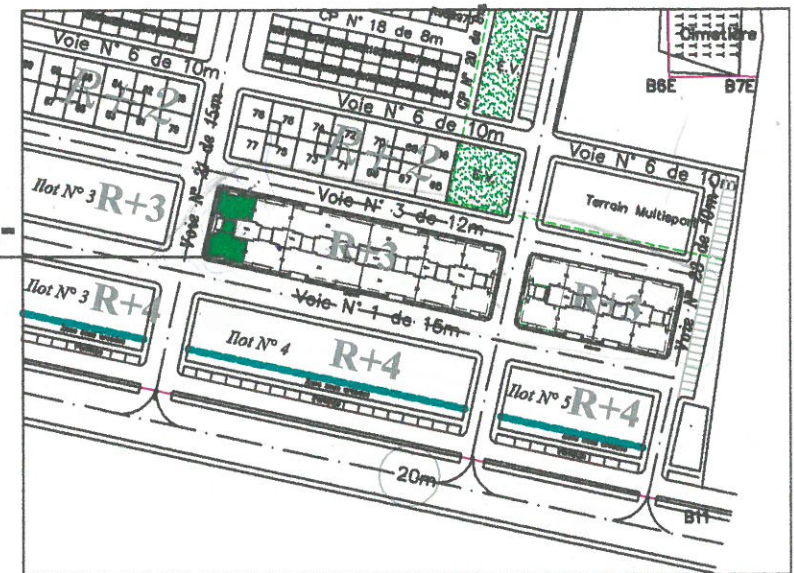


**PROGRAMME IMMOBILIER LES ORANGERS TR4 ILOTS 4
DE CONSTRUCTION DES LOGEMENTS SOCIAUX A 140.000 DH
AU LOTISSEMENT BRIDIA PREFECTURE DE MEKNES**

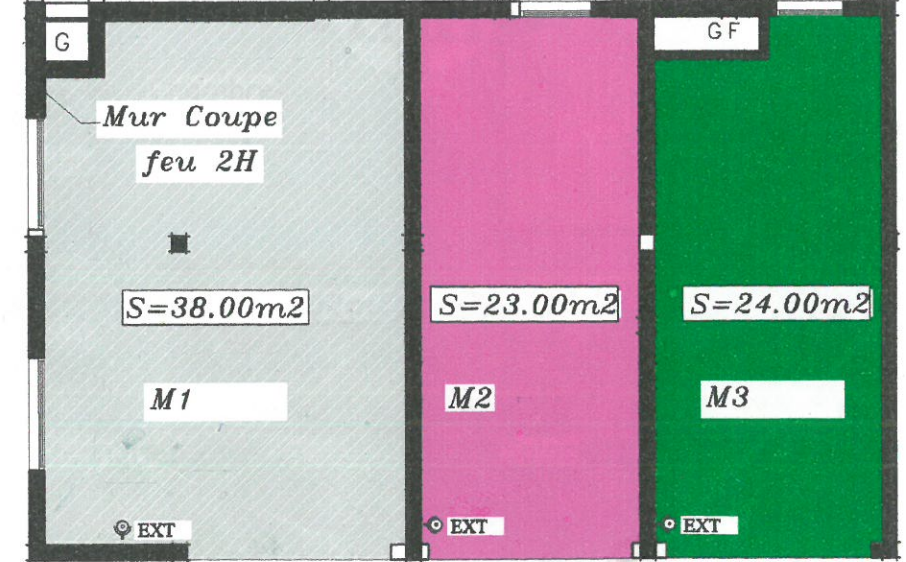
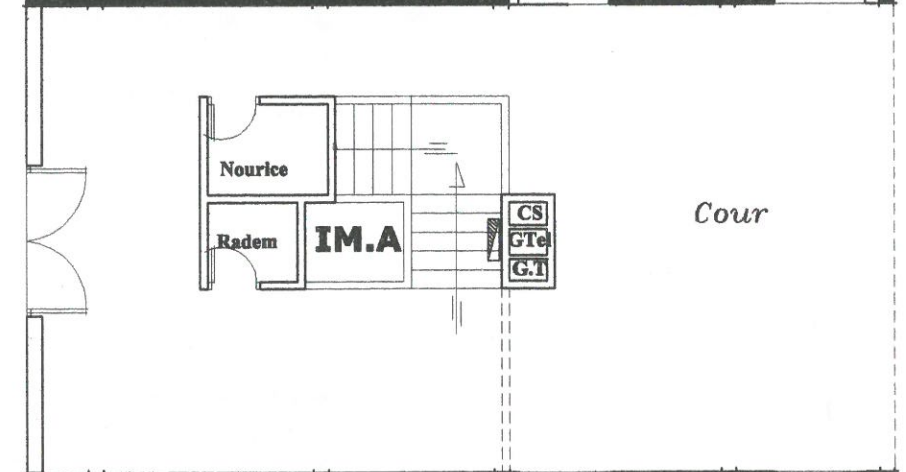
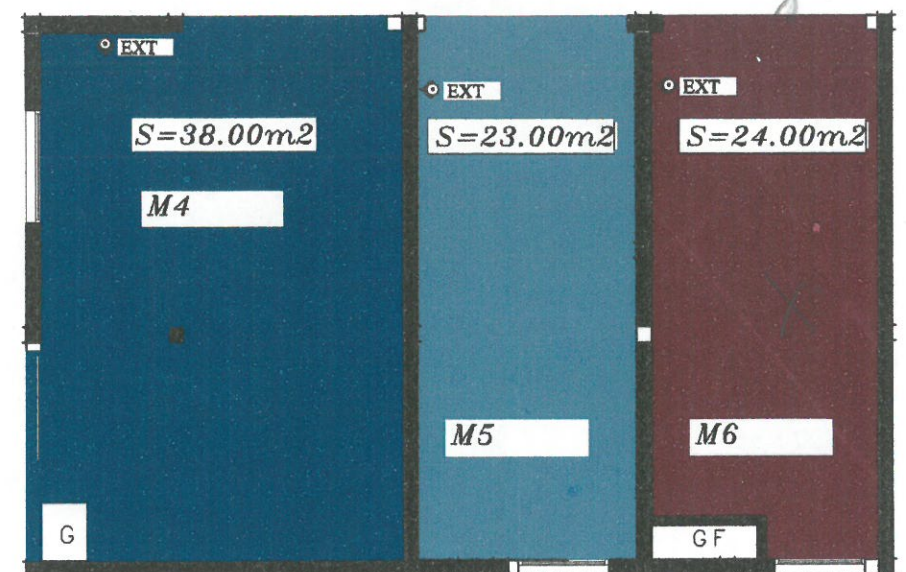
IMMEUBLE -A-



IMMEUBLE -A -RDC

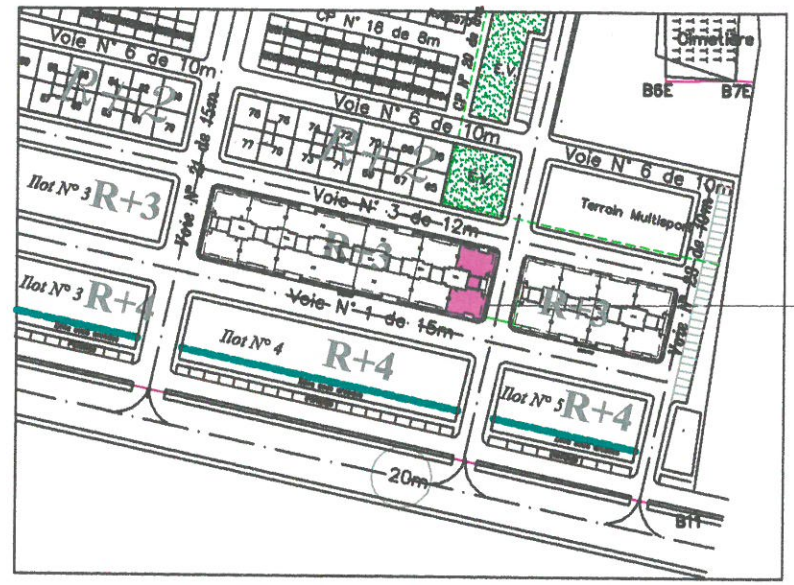
MAGAZINS	SURFACE
M1	38.00m ²
M2	23.00m ²
M3	24.00m ²
M4	38.00m ²
M5	23.00m ²
M6	24.00m ²

IMMEUBLE A



REZ DE CHAUSSEE

**PROGRAMME IMMOBILIER LES ORANGERS TR4 ILOTS 4
DE CONSTRUCTION DES LOGEMENTS SOCIAUX A 140.000 DH
AU LOTISSEMENT BRIDIA PREFECTURE DE MEKNES**

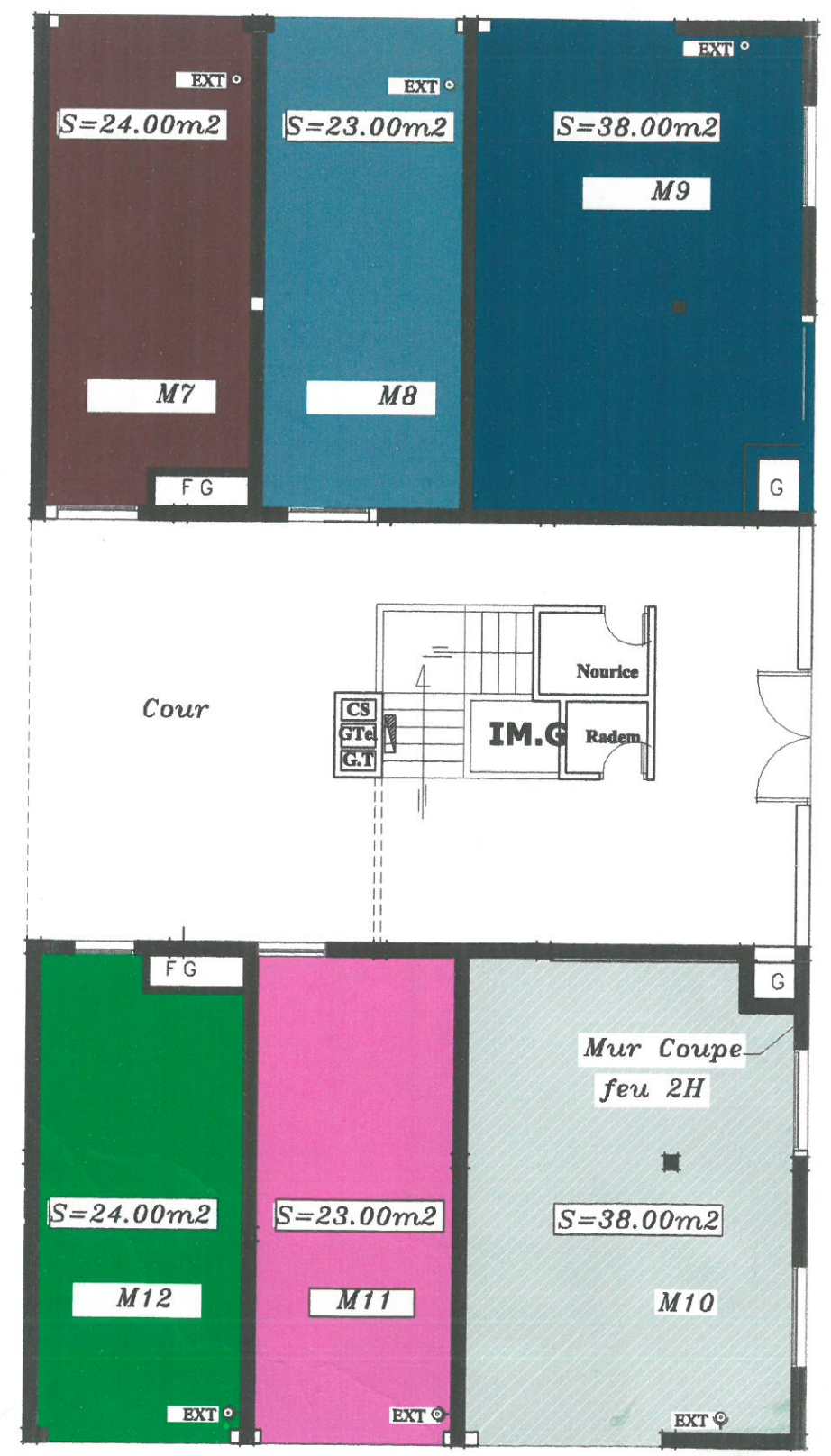


IMMEUBLE -G-

IMMEUBLE -G -RDC

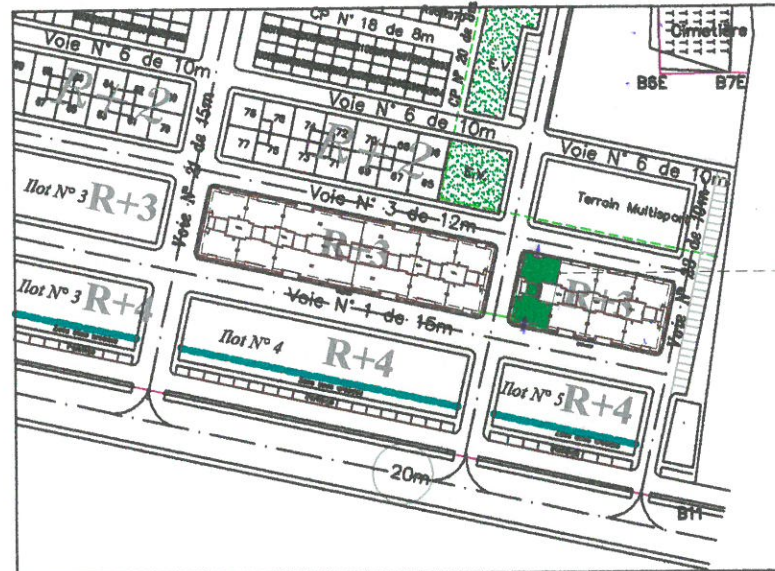
MAGAZINS	SURFACE
M7	24.00m ²
M8	23.00m ²
M9	38.00m ²
M10	38.00m ²
M11	23.00m ²
M12	24.00m ²

IMMEUBLE G



REZ DE CHAUSSEE

**PROGRAMME IMMOBILIER LES ORANGERS TR4 ILOTS 5
DE CONSTRUCTION DES LOGEMENTS SOCIAUX A 140.000 DH
AU LOTISSEMENT BRIDIA PREFECTURE DE MEKNES**

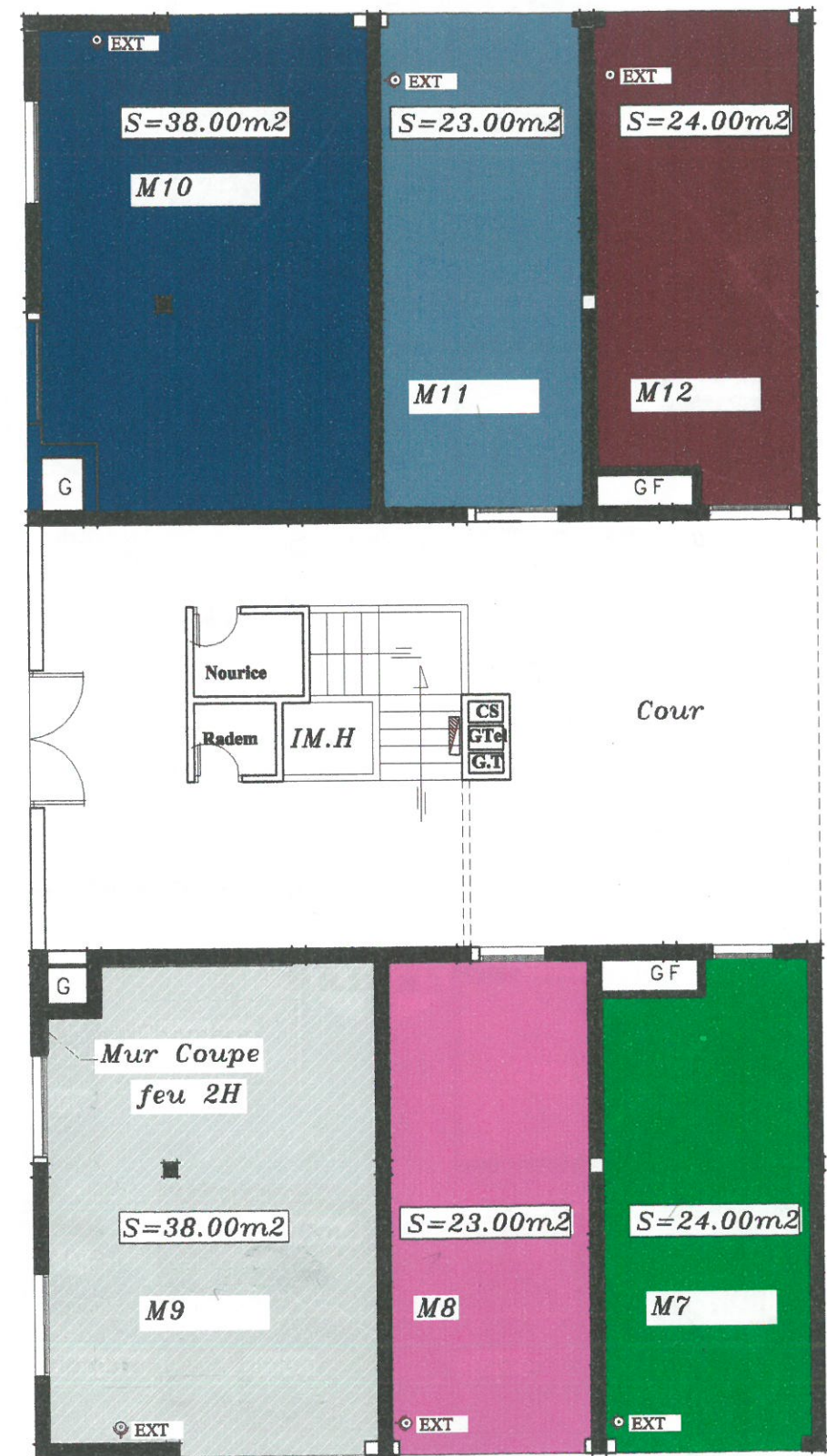


IMMEUBLE -H-

IMMEUBLE -H -RDC

MAGAZINS	SURFACE
M7	24.00m ²
M8	23.00m ²
M9	38.00m ²
M10	38.00m ²
M11	23.00m ²
M12	24.00m ²

IMMEUBLE H



REZ DE CHAUSSEE

**PROGRAMME IMMOBILIER LES ORANGERS TR4 ILOTS 5
DE CONSTRUCTION DES LOGEMENTS SOCIAUX A 140.000 DH
AU LOTISSEMENT BRIDIA PREFECTURE DE MEKNES**

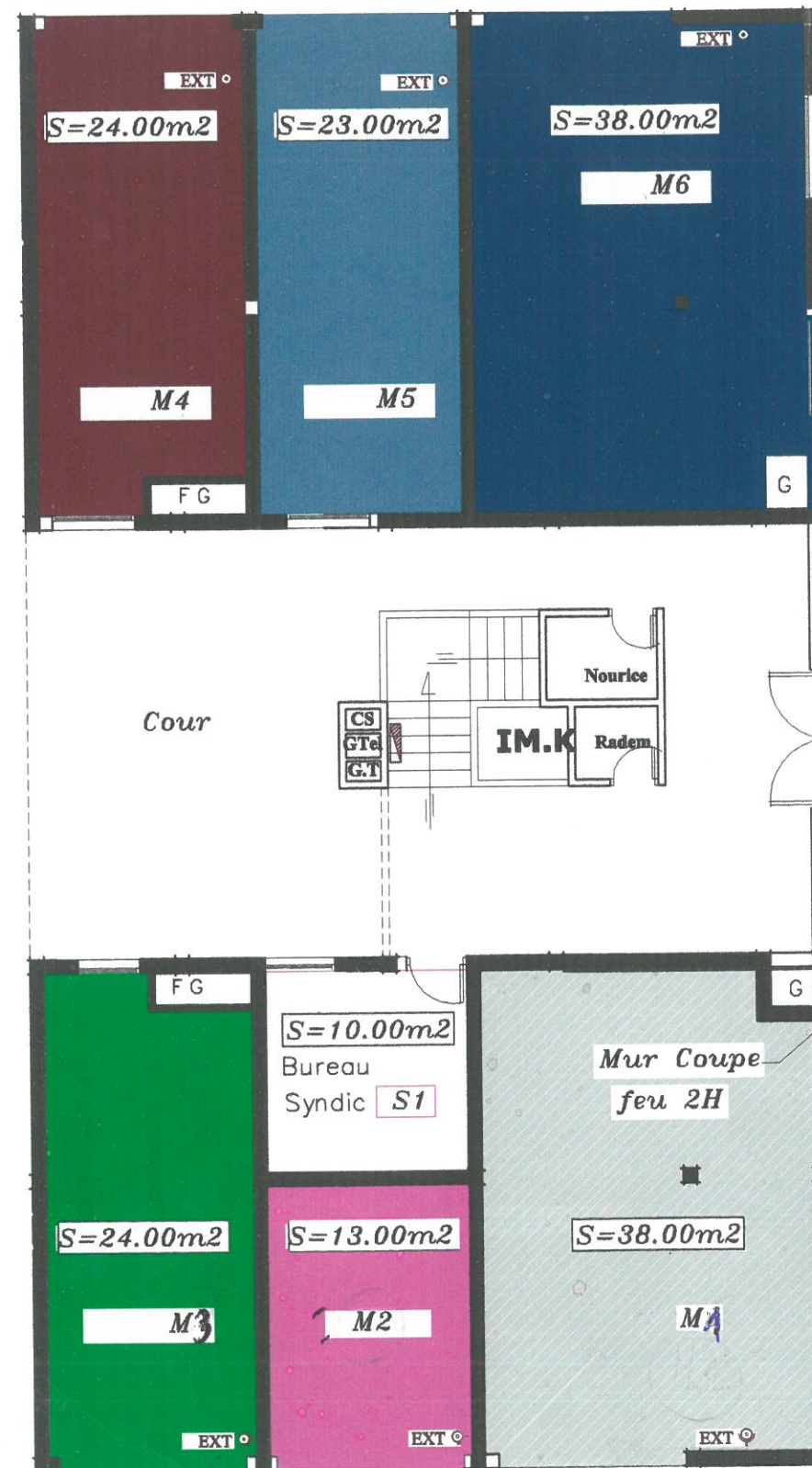


IMMEUBLE -K-

IMMEUBLE -K -RDC

MAGAZINS	SURFACE
M1	38.00m ²
M2	13.00m ²
M3	24.00m ²
M4	24.00m ²
M5	23.00m ²
M6	38.00m ²

IMMEUBLE K



REZ DE CHAUSSEE