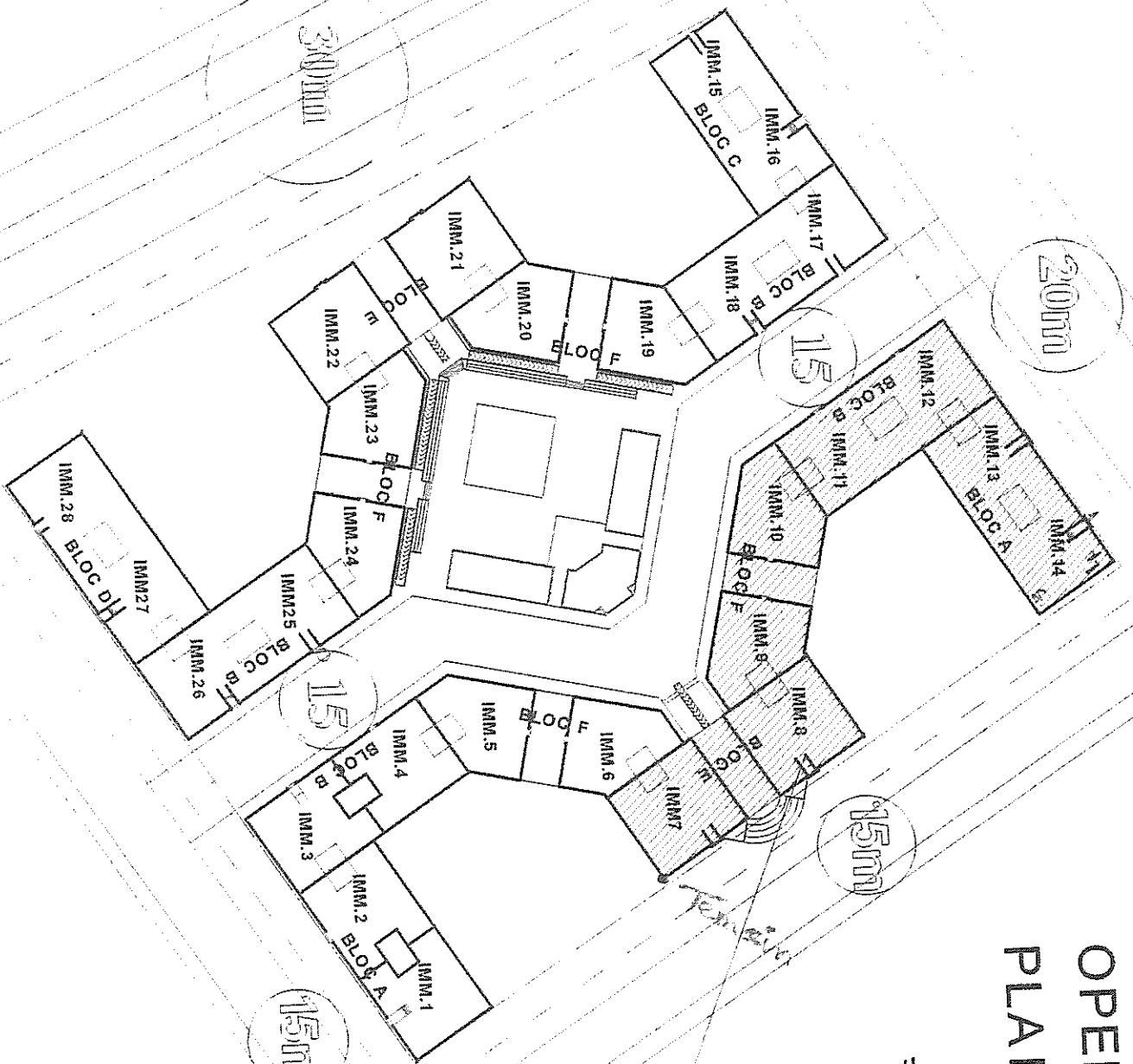
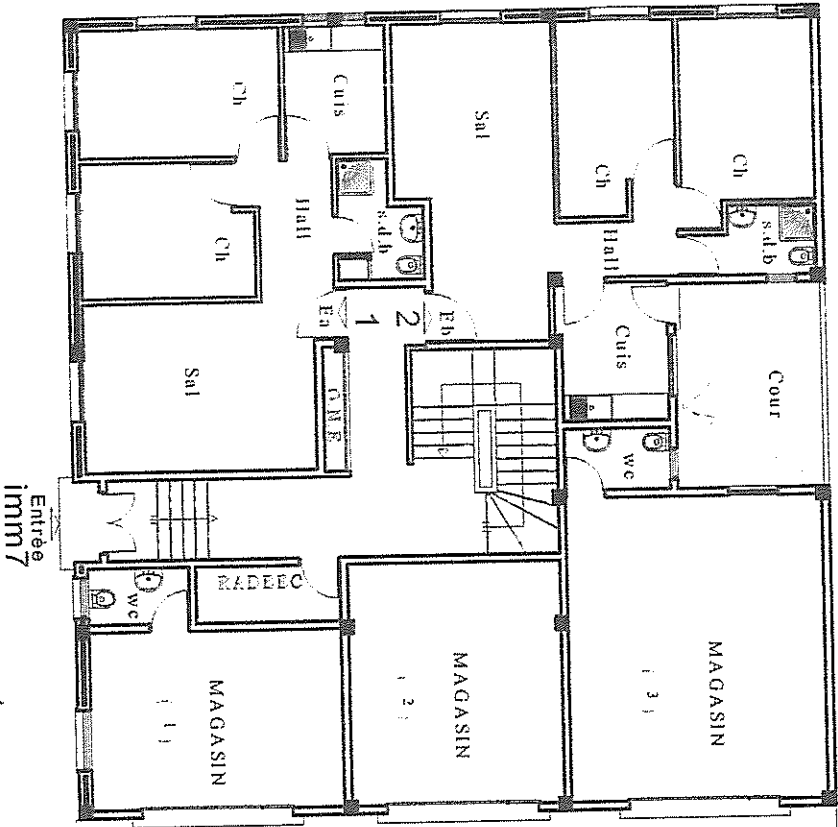


OPERATION RIHANE PLAN MASSE

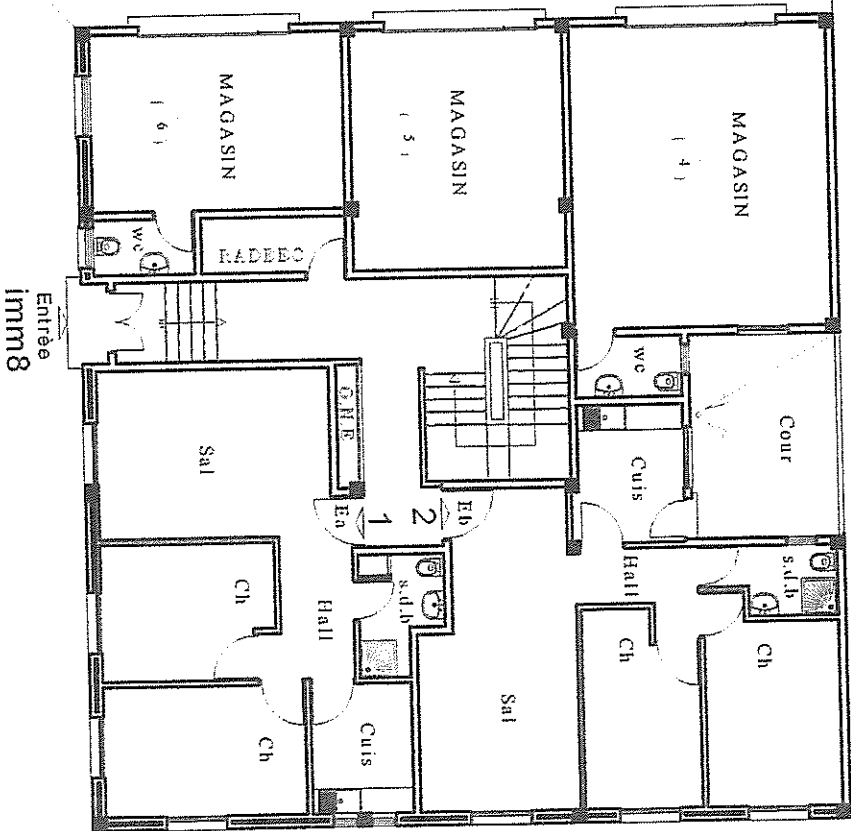
Logements sociaux
250.000 D.H.T.



2ème TRANCHÉ
BLOC E

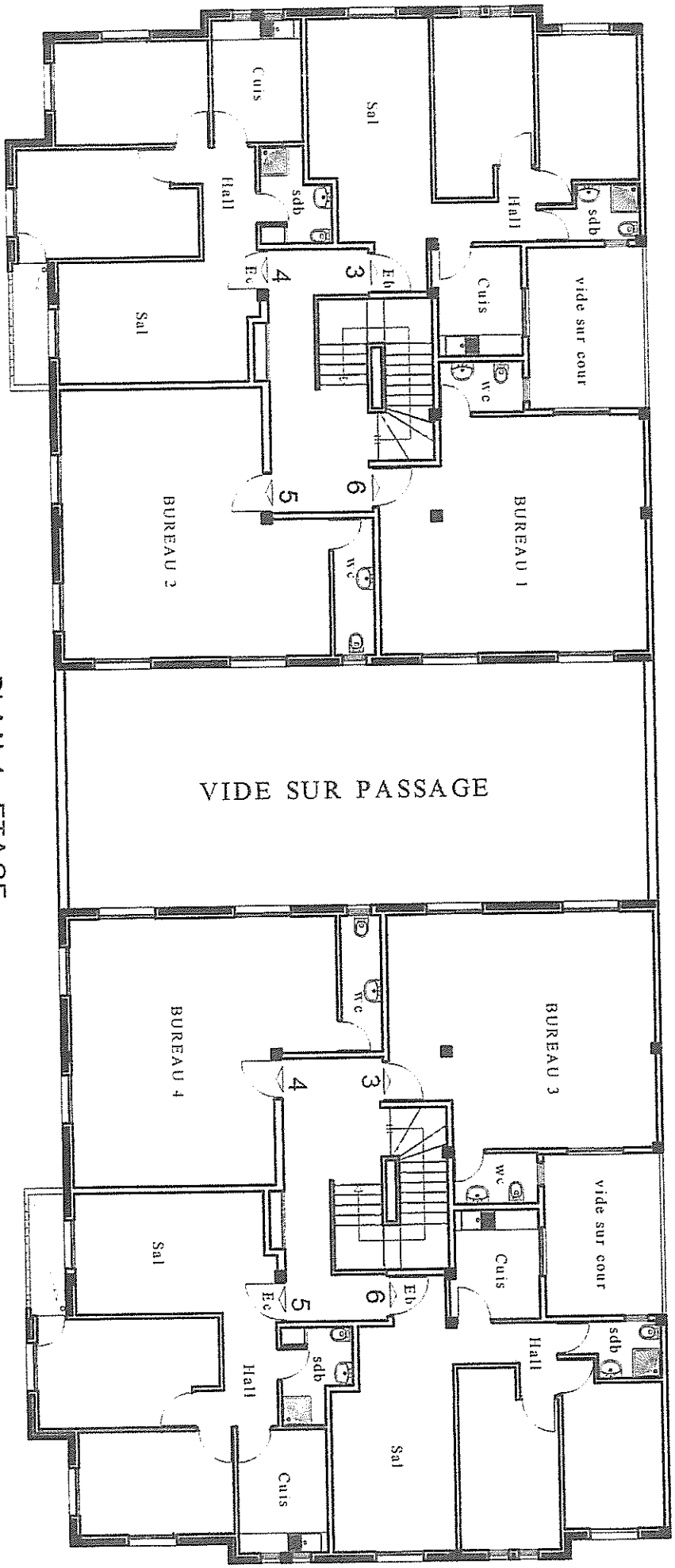


PASSAGE

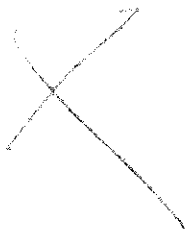


PLAN RDCH

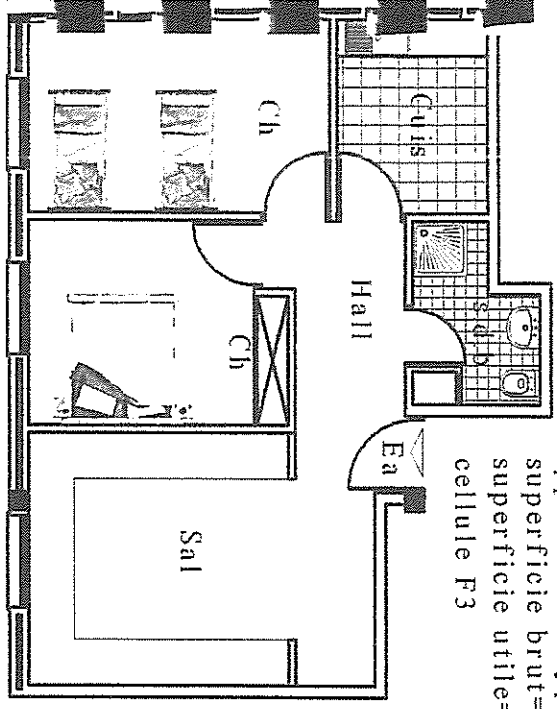
2ème TRANCHÉE
BLOC E



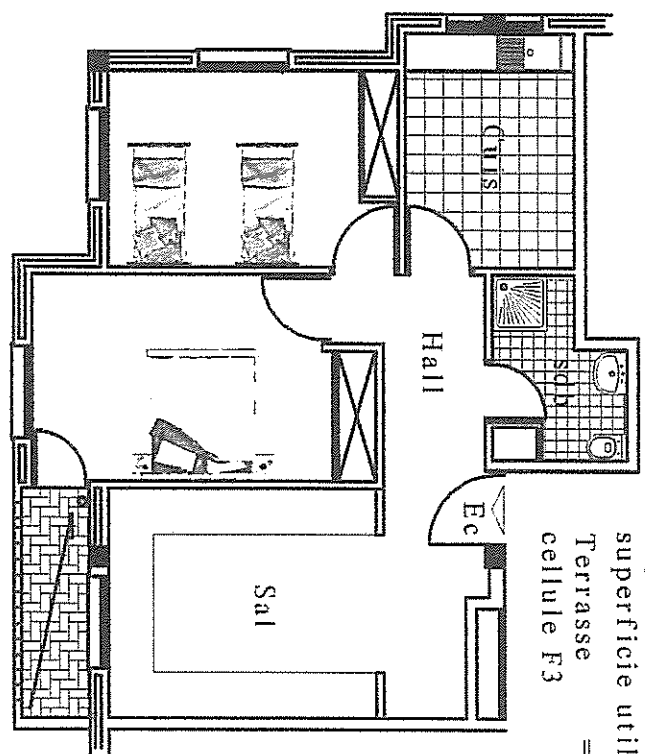
PLAN 1er ETAGE



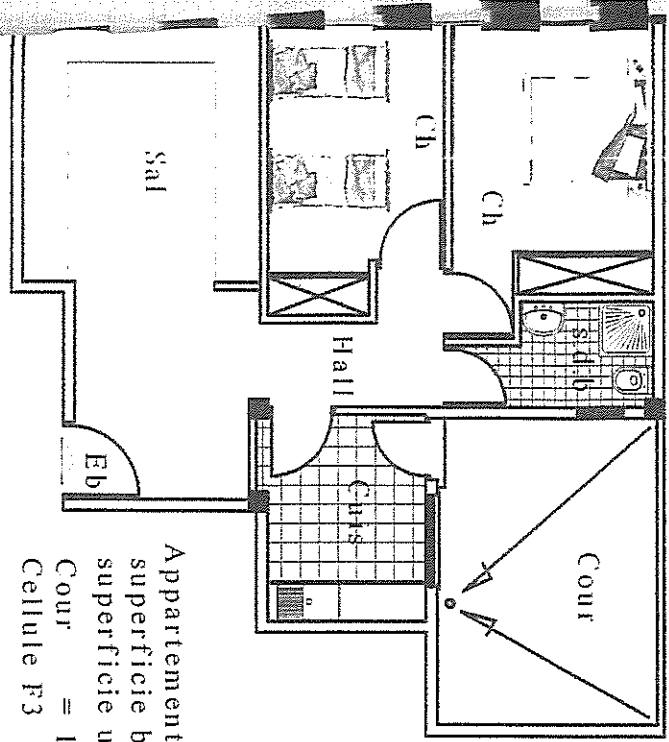
Appartement type E a
 superficie brut= 55.00m²
 superficie utile=49.30m²
 cellule F3



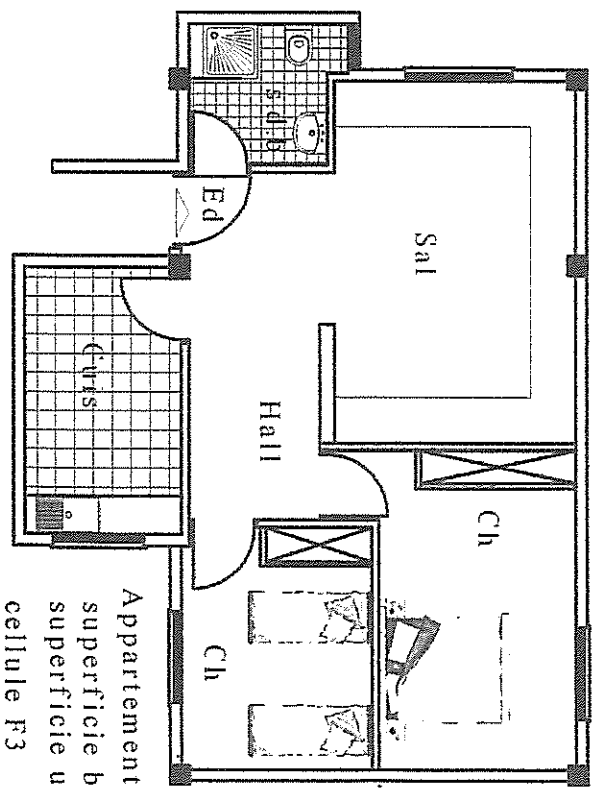
Appartement type E c
 superficie brut= 61.70m²
 superficie utile=52.70m²
 Terrasse = 2.70m²
 cellule F3



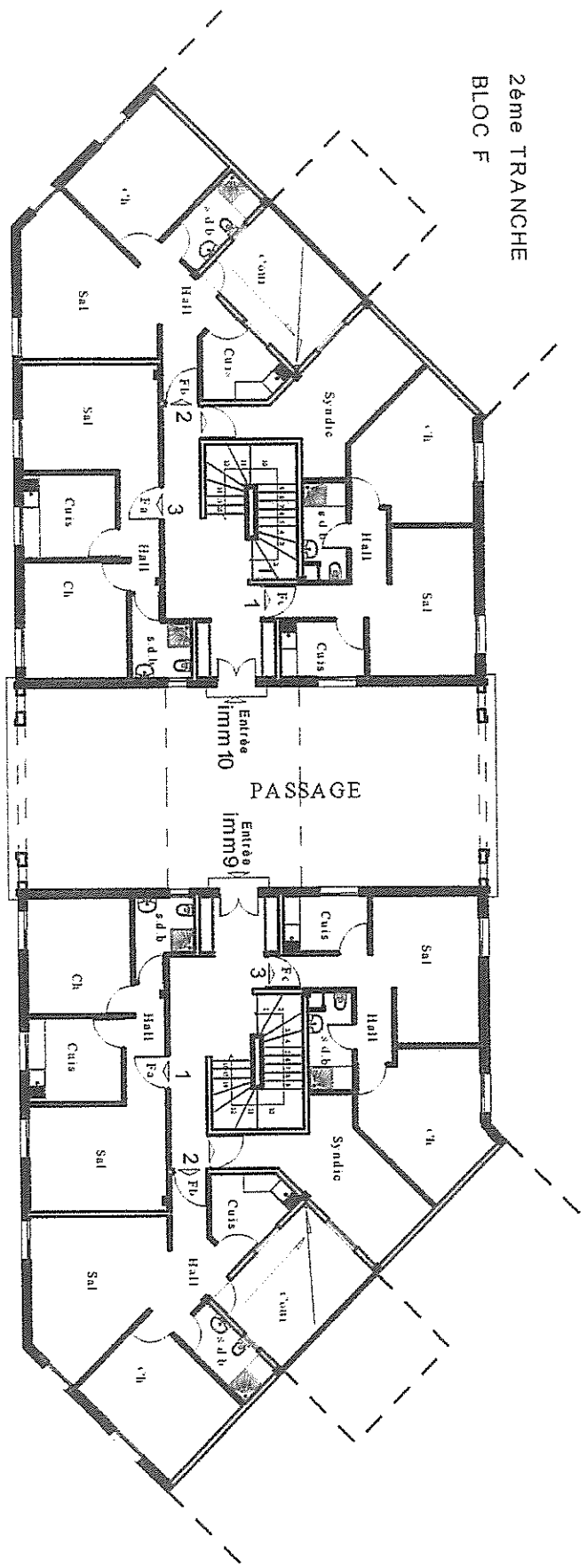
Appartement type E b
 superficie brut= 68.00m²
 superficie utile=51.00m²
 Cour = 12.00 m²
 Cellule F3



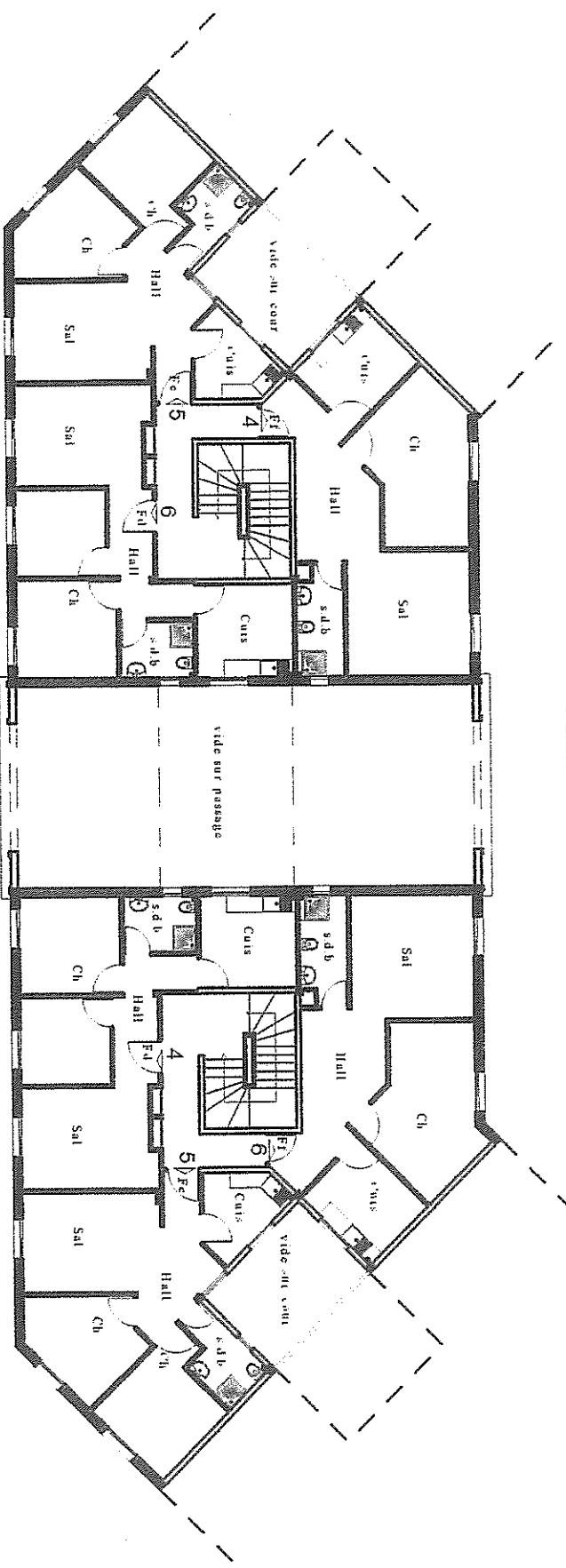
Appartement type E d
 superficie brut= 60.00m²
 superficie utile=55.60m²
 cellule F3



2ème TRANCHÉE
BLOC F



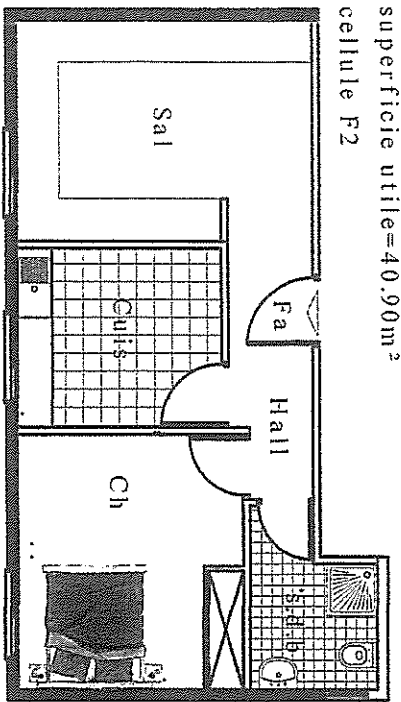
PLAN RDCH



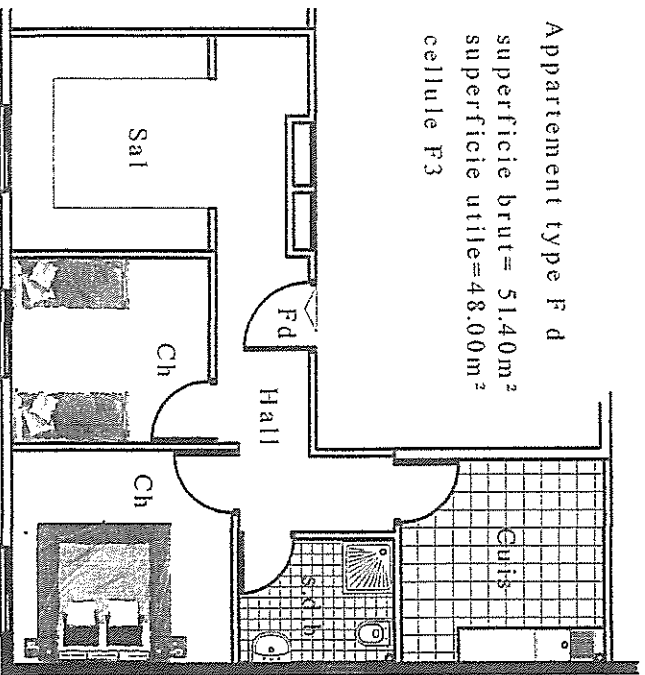
PLAN 1er ETAGE



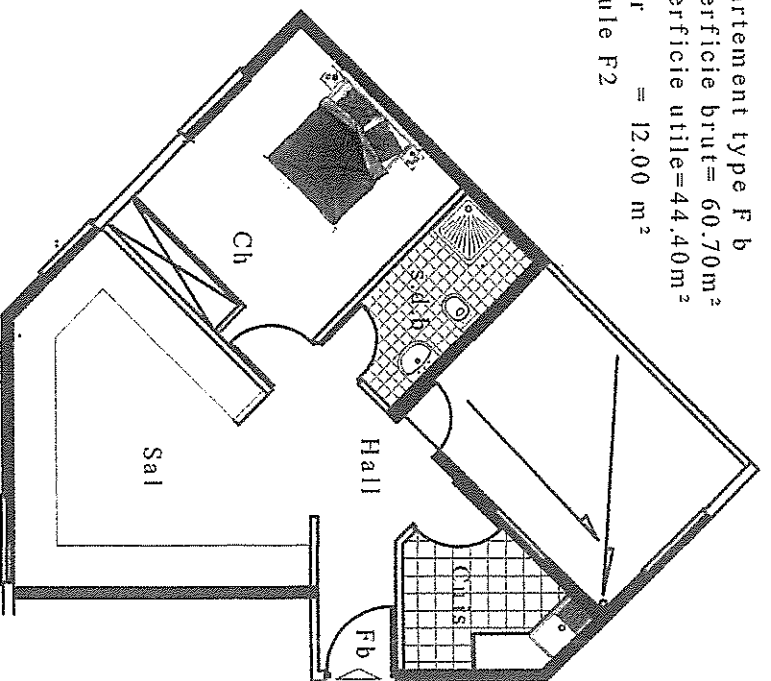
Appartement type F a
 superficie brut= 44.45m²
 superficie utile=40.90m²
 cellule F2



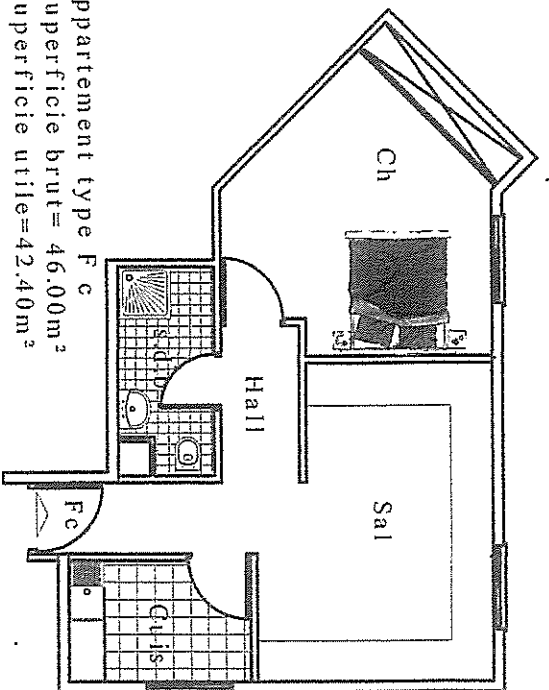
Appartement type F d
 superficie brut= 51.40m²
 superficie utile=48.00m²
 cellule F3



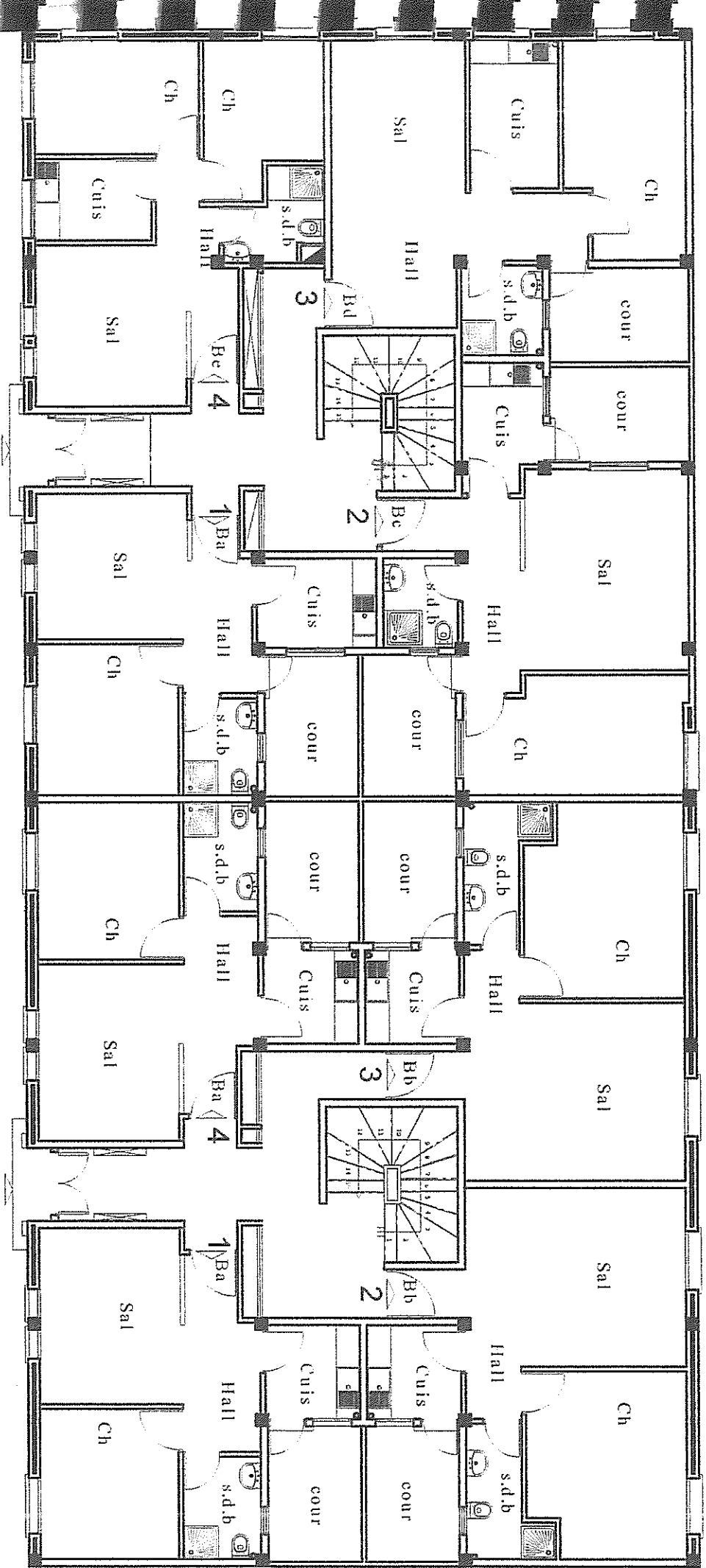
Appartement type F b
 superficie brut= 60.70m²
 superficie utile=44.40m²
 Cour = 12.00 m²
 cellule F2



Appartement type F c
 superficie brut= 46.00m²
 superficie utile=42.40m²
 cellule F2



2ème TRANCHE
BLOC B



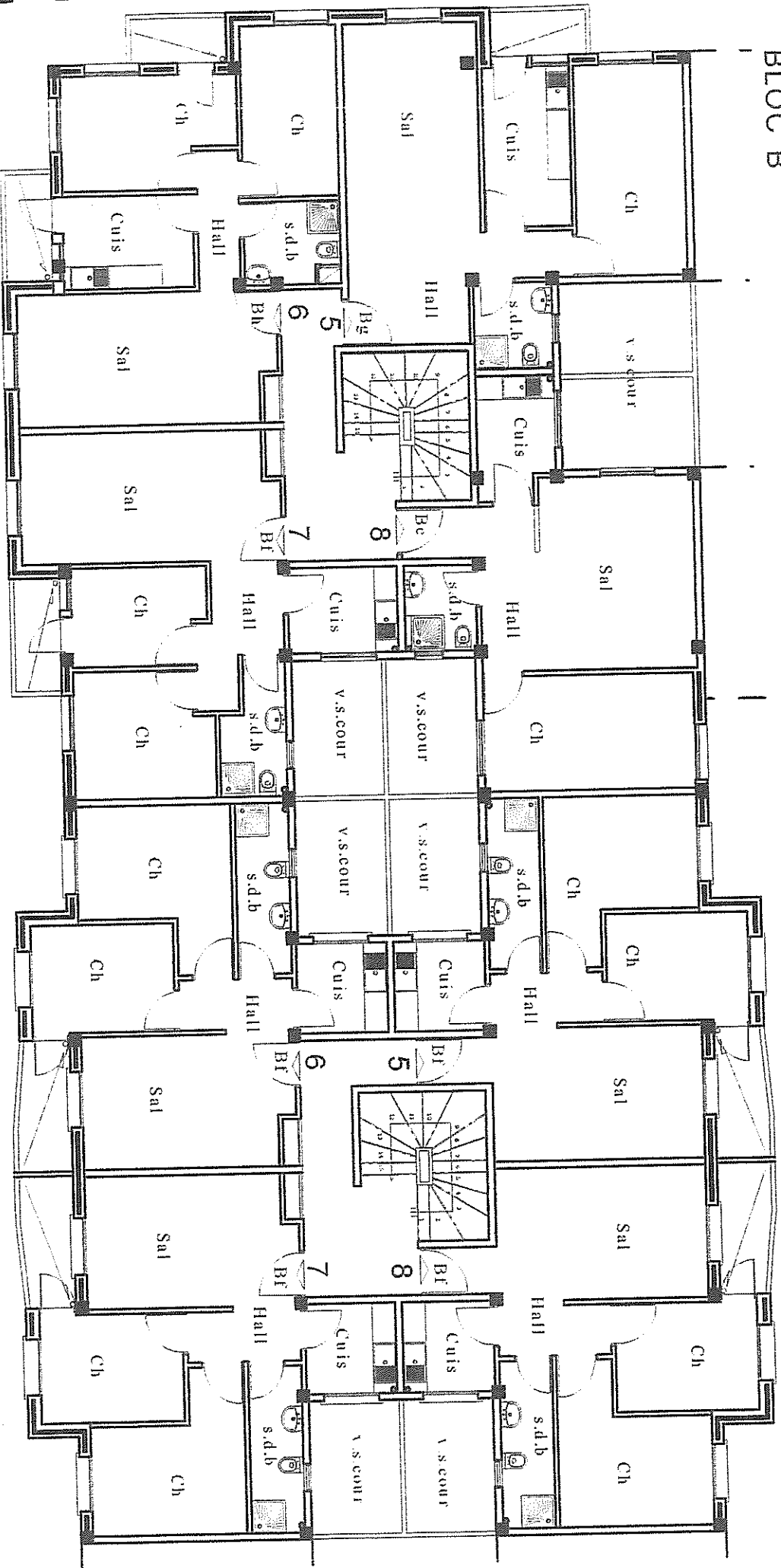
Entrée
imm 12

PLAN RDCH

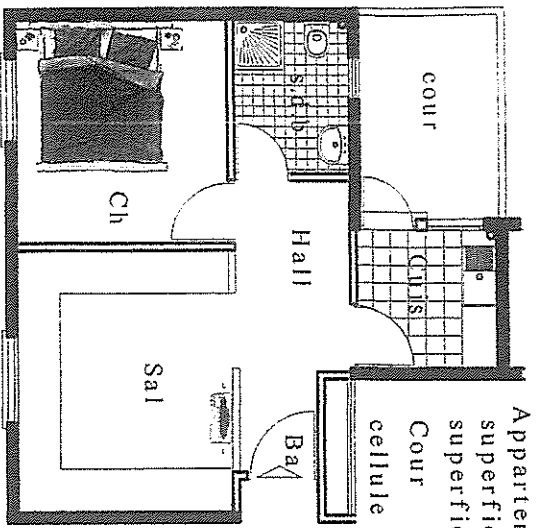
Entrée
imm 11

2ème TRANCHE

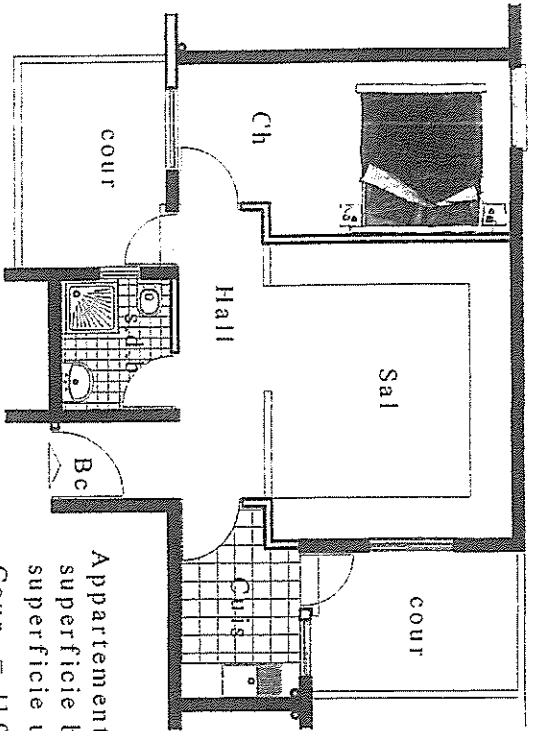
BLOCC B



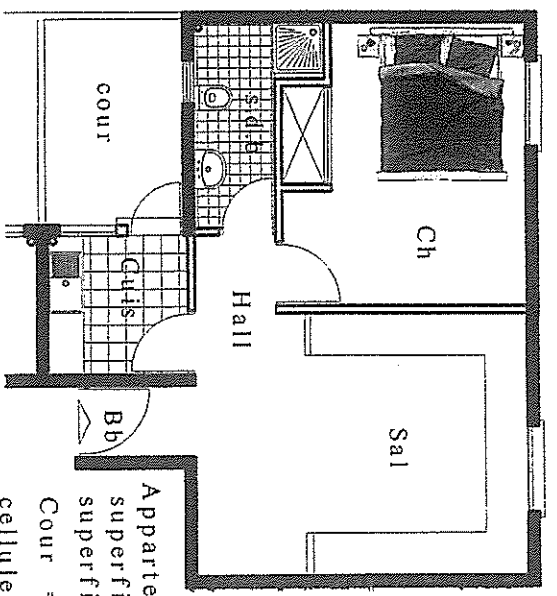
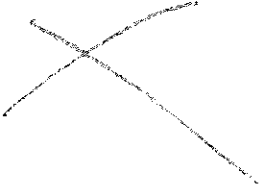
PLAN 1er ETAGE



Appartement type B a
 superficie brut= 44.50m²
 superficie utile=35.00m²
 Cour = 5.50m²
 cellule F2

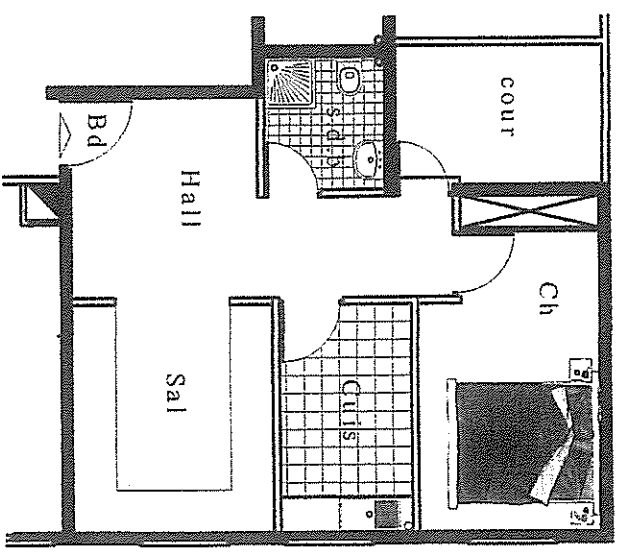


Appartement type B c
 superficie brut= 51.70m²
 superficie utile=40.70m²
 Cour = 11.00m²
 cellule F2

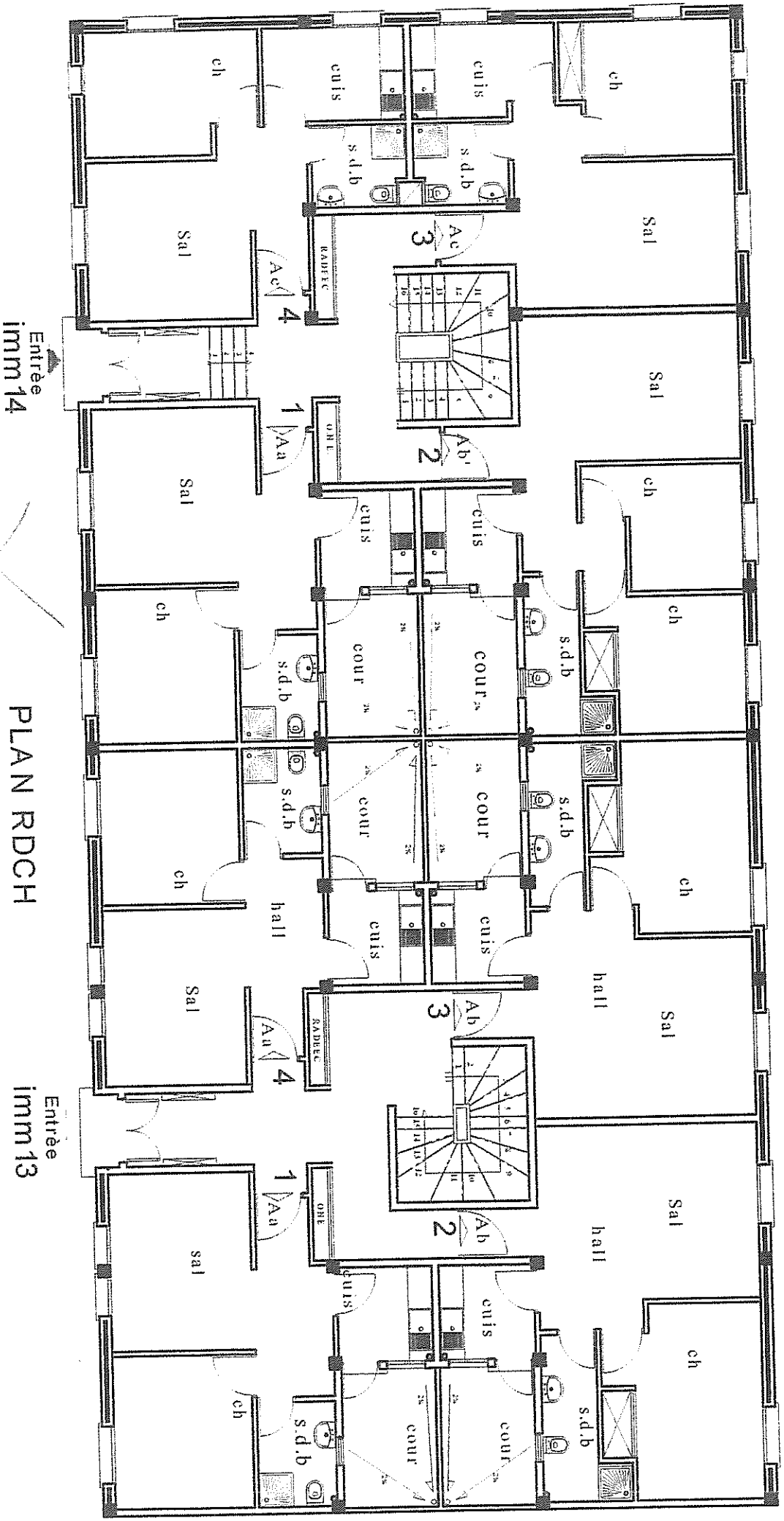


Appartement type B b
 superficie brut= 51.00m²
 superficie utile=42.00m²
 Cour = 5.50m²
 cellule F2

Appartement type B d
 superficie brut= 51.00m²
 superficie utile=42.00m²
 Cour = 5.50m²
 cellule F2

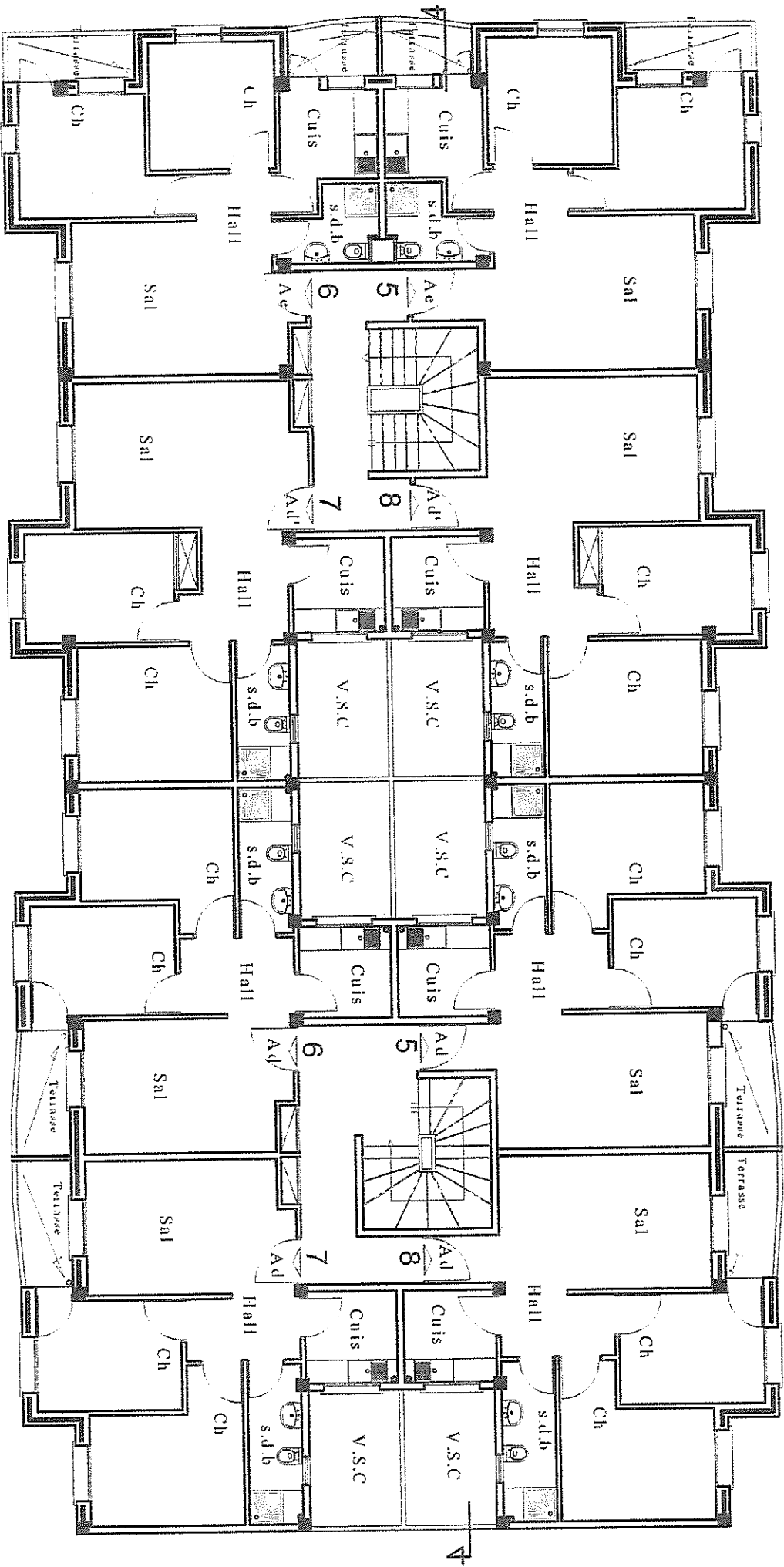


2ème TRANCHE
BLOC A

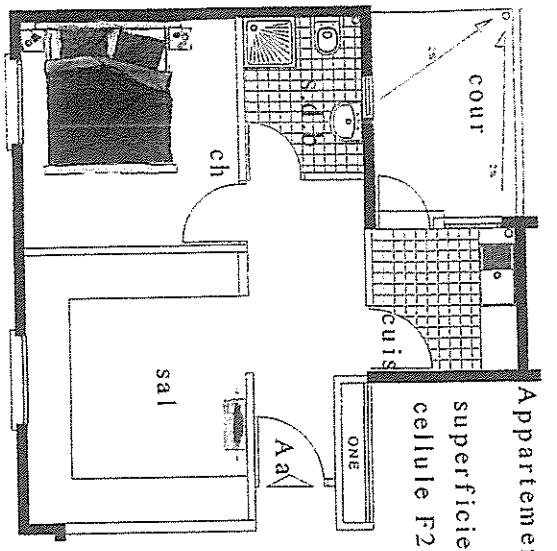


PLAN RDCH

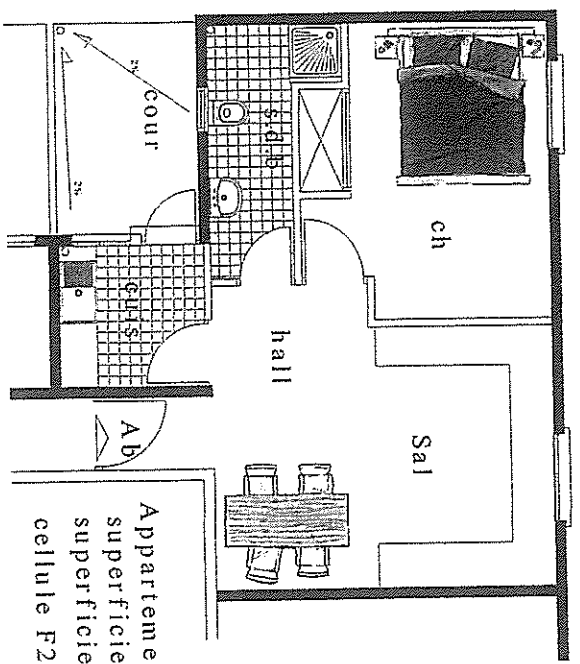
2ème TRANCHÉE
BLOC A



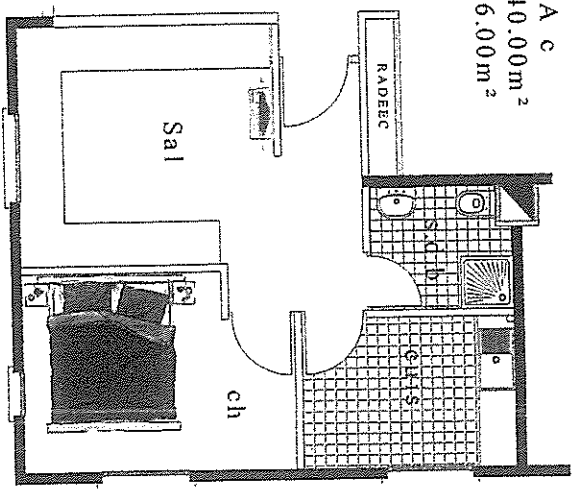
PLAN 1er ETAGE



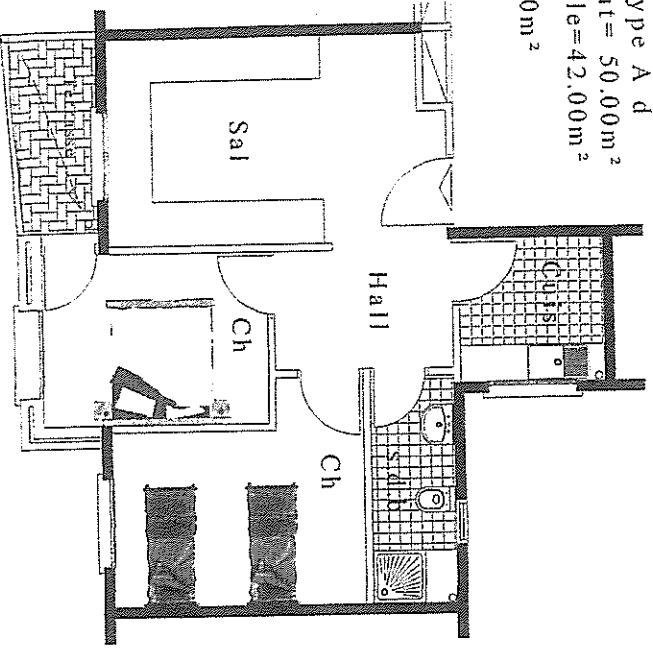
Appartement type A a
superficie utile=35.00m²
cellule F2



Appartement type A c
superficie brut= 40.00m²
superficie utile=36.00m²
cellule F2



Appartement type A d
superficie brut= 50.00m²
superficie utile=42.00m²
Terrasse=03.00m²
cellule F3



Appartement type A b
superficie brut= 46.00m²
superficie utile=42.00m²
cellule F2

Appartement type A e
superficie brut= 54.00m²
superficie utile=43.00m²
Terrasse1=03.00m²
Terrasse2=04.00m²
cellule F3

