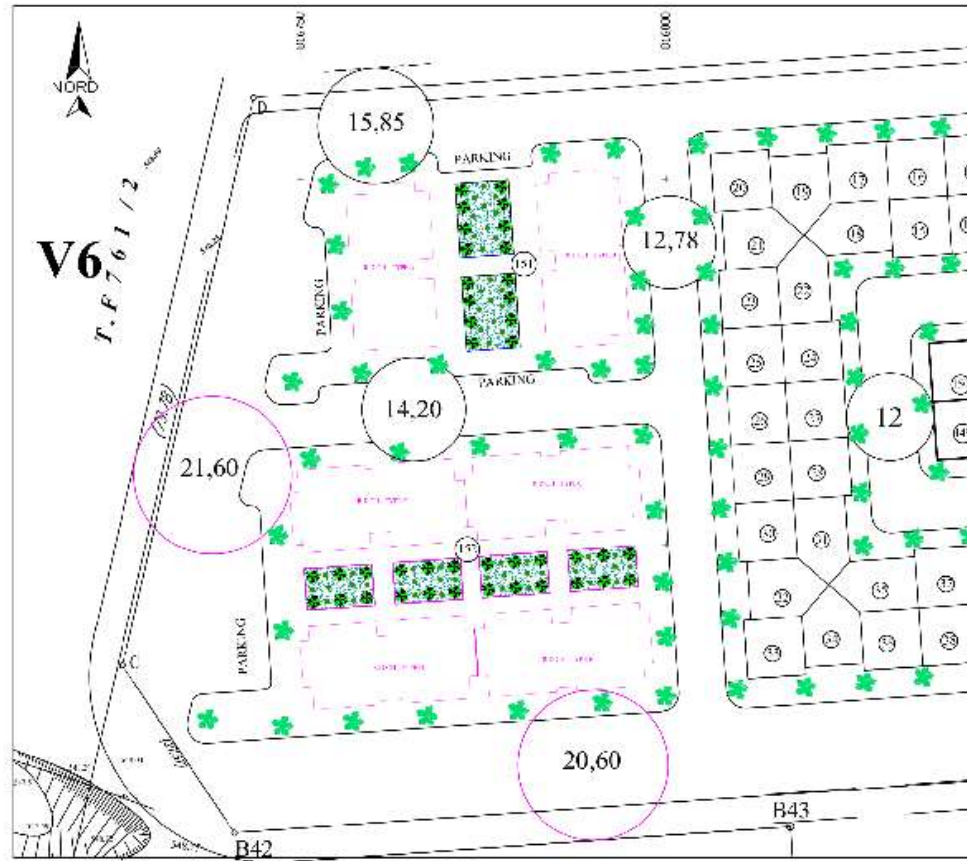


Royaume du Maroc
Wilaya de la Région de l'Oriental
Préfecture d'Oujda-Angad
Commune urbaine Oujda

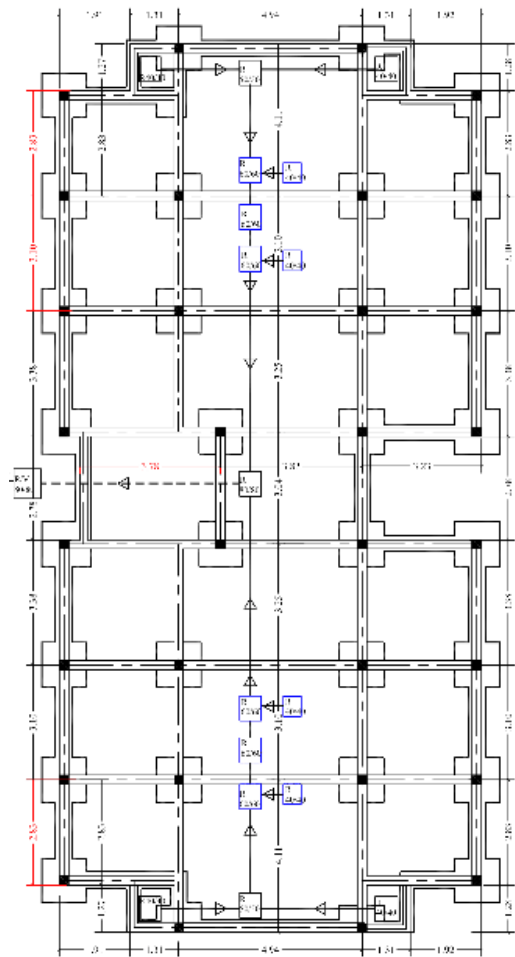
Propriétaire: sté AL OMRANE OUJDA

Construction d'un groupe de logements à faible V.I.T
Opération AMAL – TR II
Sis: sur la propriété dite « Relogement Bidonvilles »
Lotissement Afak III (Benaddi)
Lots n°151 T.F n° 124 626
Lots n°152 T.F n° 124 627
Prés de la voie d'évitement allant de la RN2 à la RN6
Commune Urbaine d'Oujda

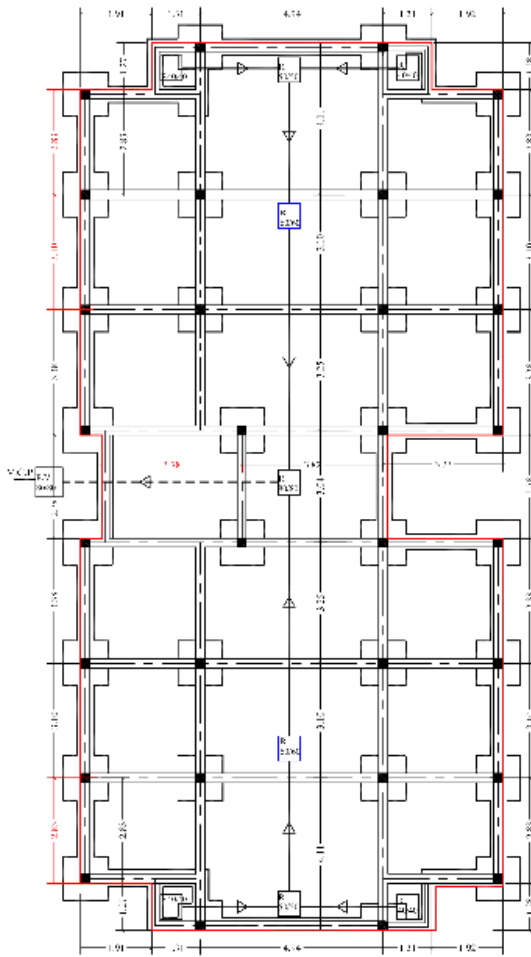




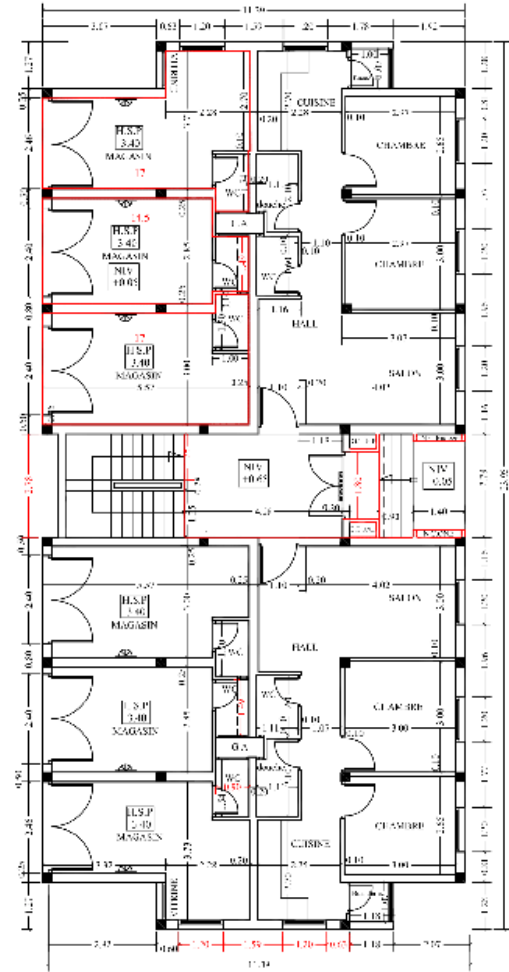
SITUATION



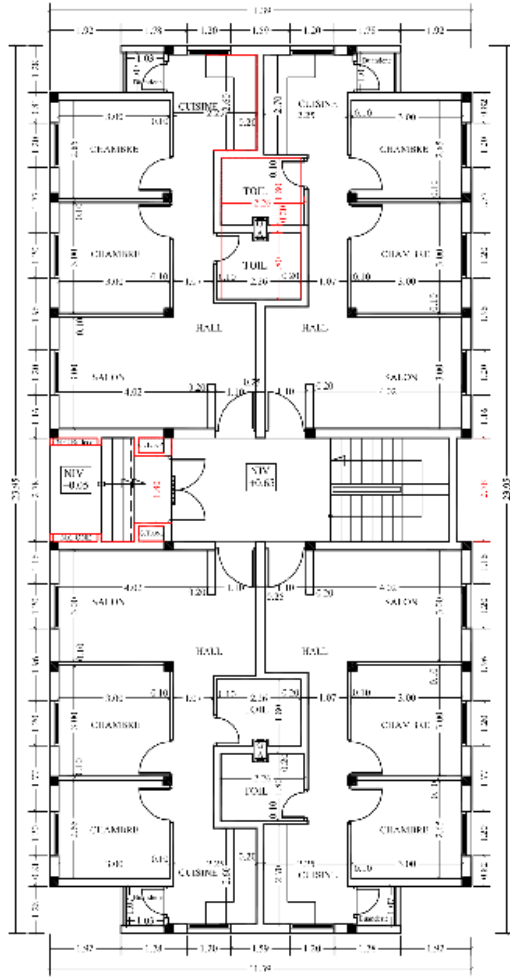
FONDACTIONS
TYPE A-D et E



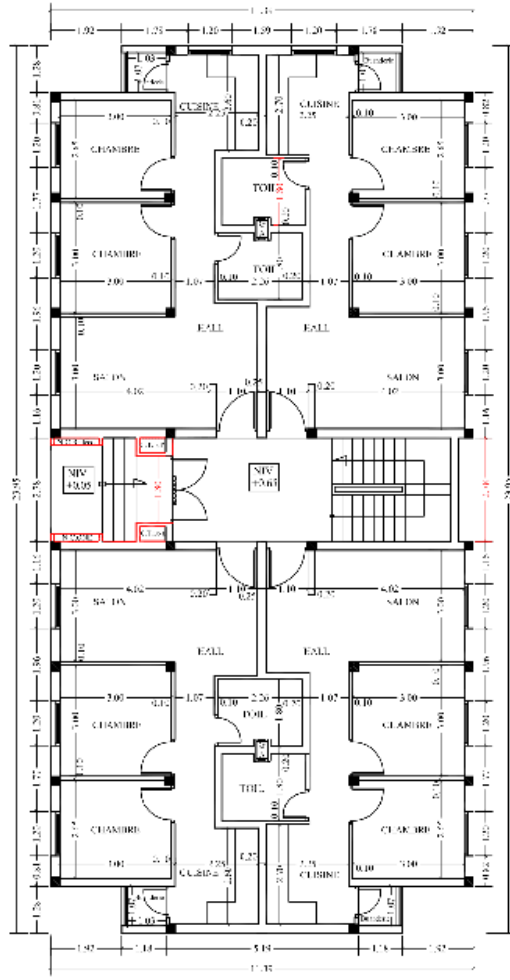
FONDACTIONS
TYPE B et C



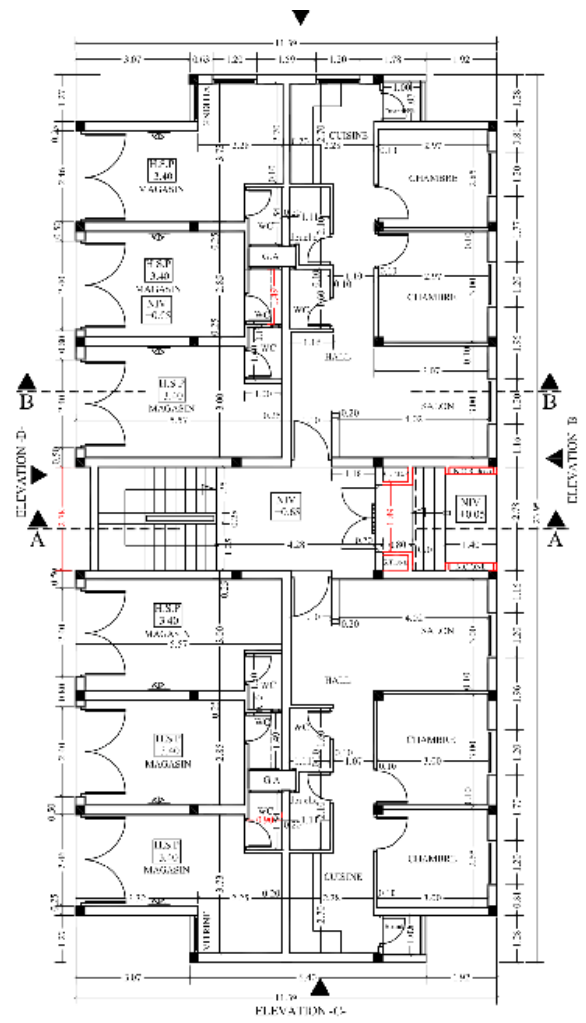
R.D.II TYPE A



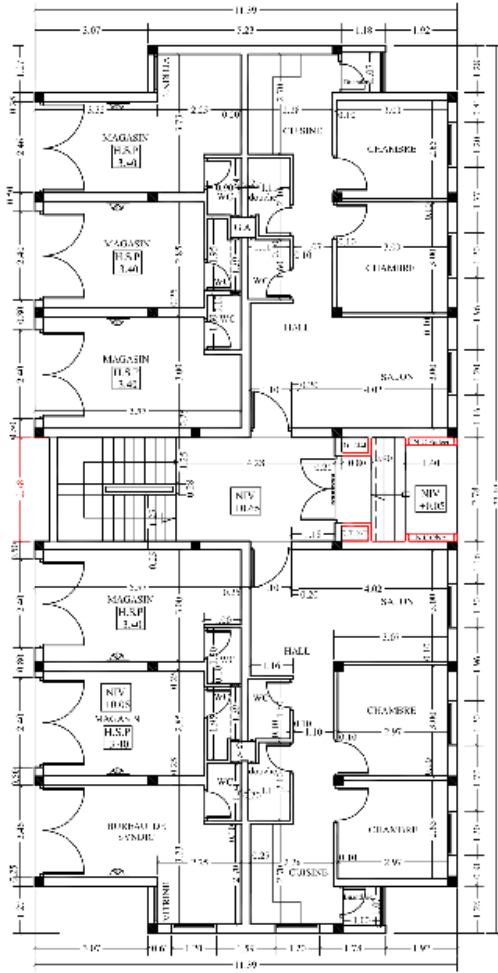
R.D.CII TYPE B



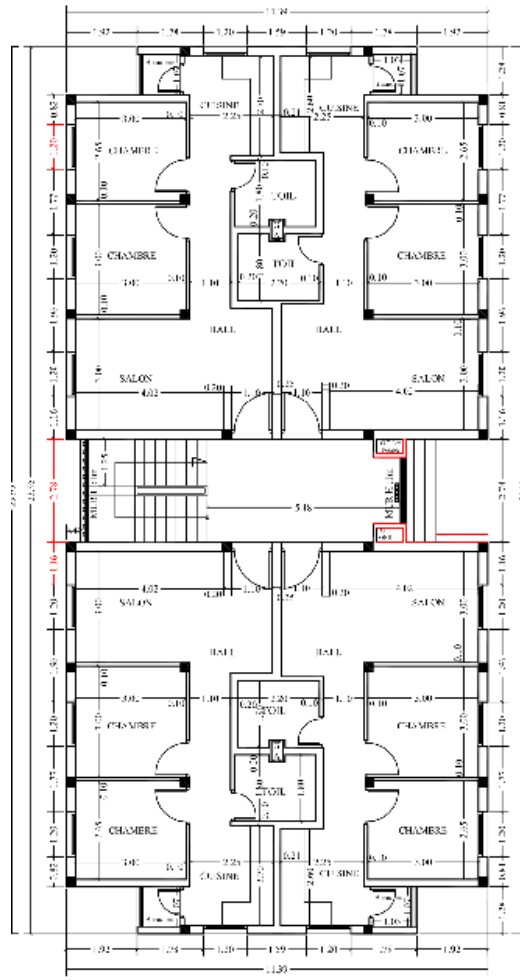
R.D.CII TYPE C



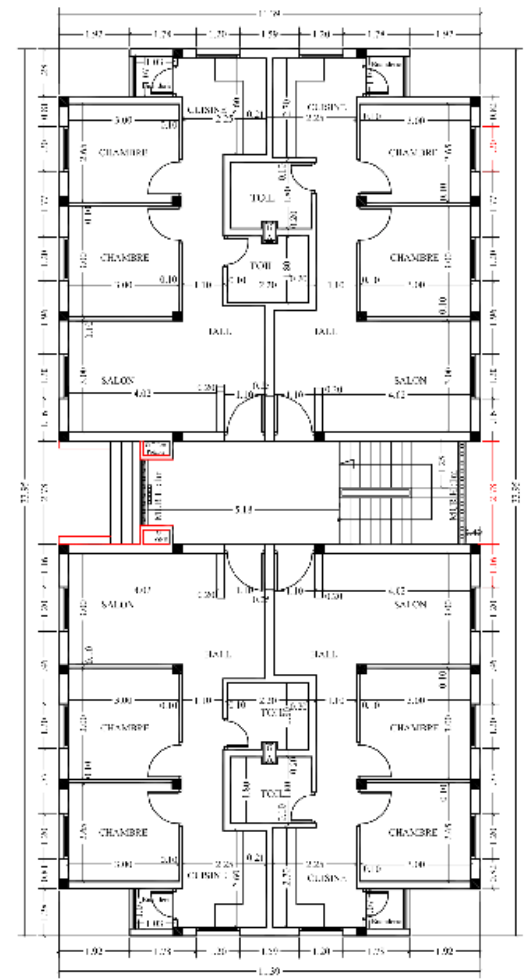
R.D.CII TYPE D



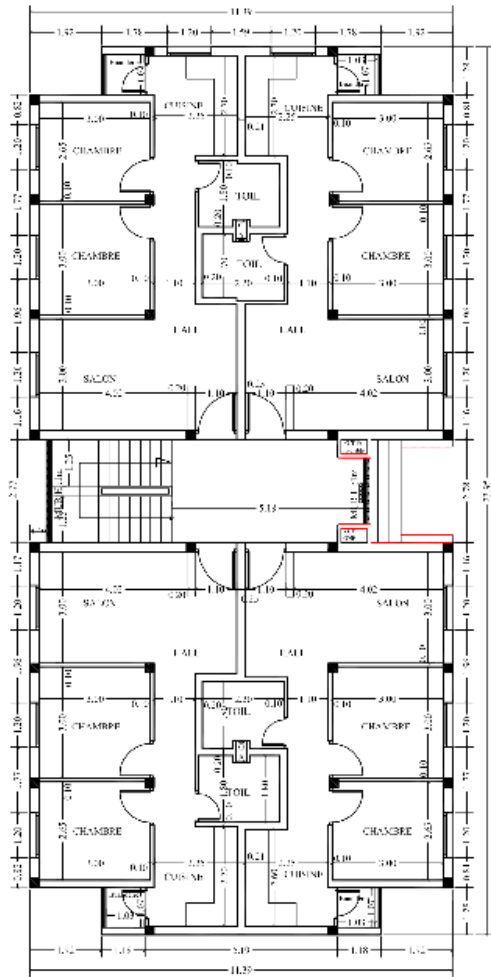
R.D.II TYPE E



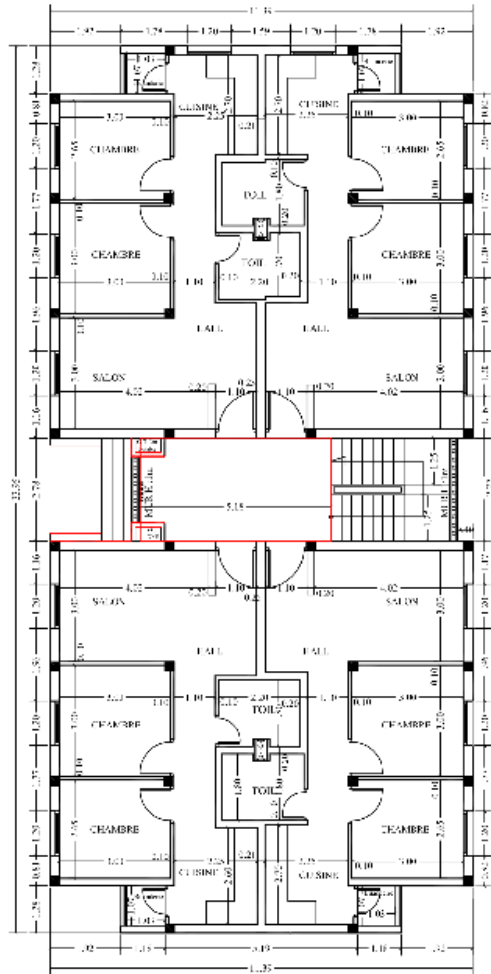
ETAGE COURANT TYPE A



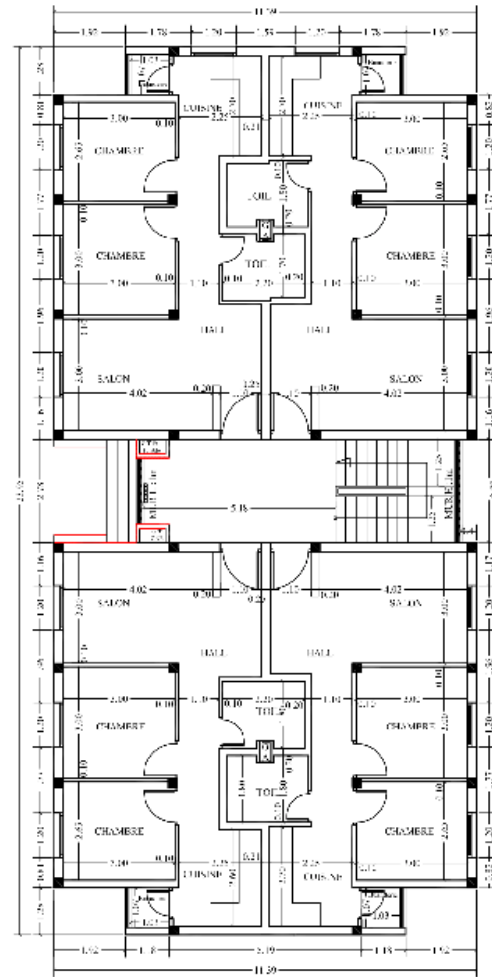
ETAGE COURANT TYPE B



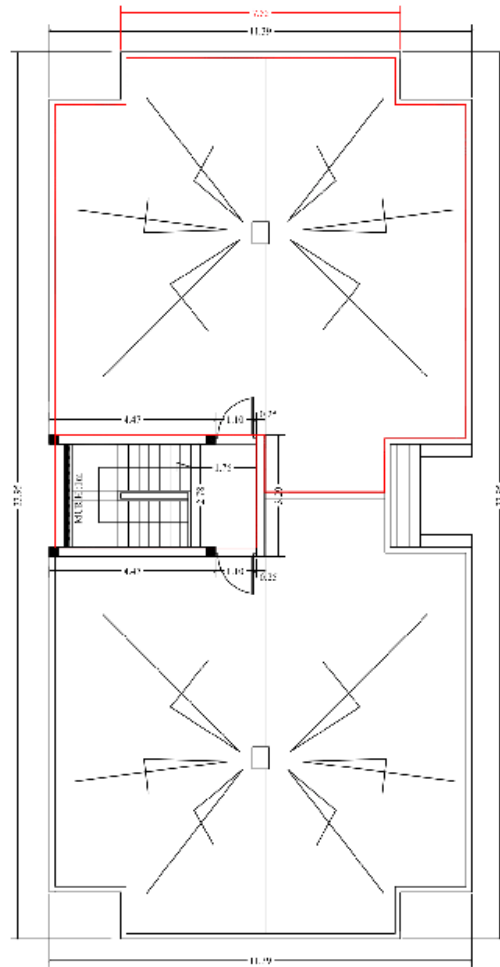
ETAGE COURANT
TYPE C



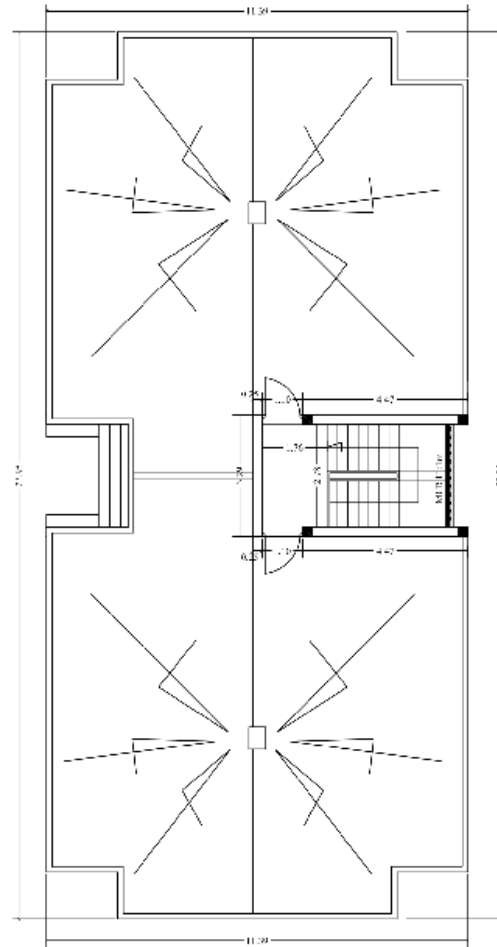
ETAGE COURANT
TYPE D



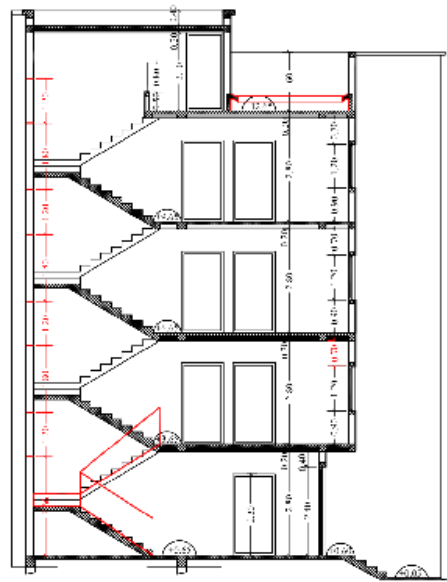
ETAGE COURANT
TYPE E



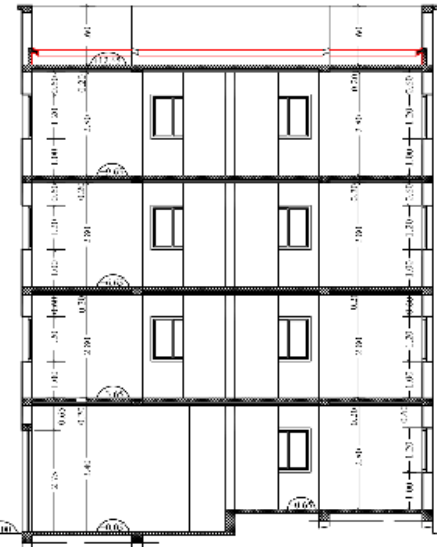
TERRASSE
TYPE A et C



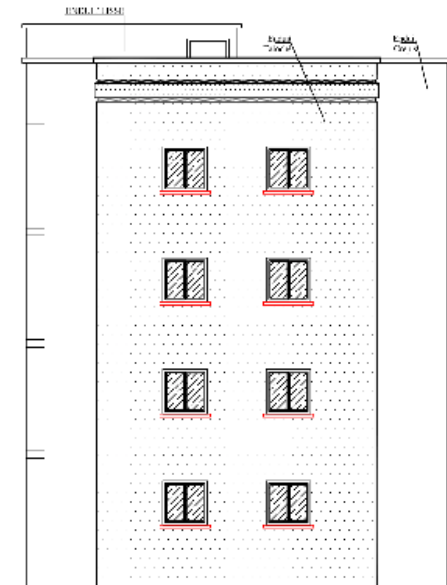
TERRASSE
TYPE B-D et C



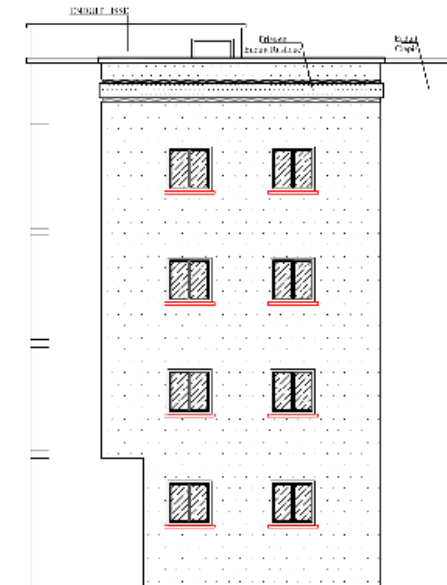
COUPE -A-A-



COUPE -B-B-
(R.D.CH TYPE A - D et E)



ELEVATION A
(R.D.CH TYPE B et C)



ELEVATION C
(R.D.CH TYPE A - D et E)



ELEVATION -B-



ELEVATION -D-
(R.D.C.H TYPE A - D et E)



ELEVATION -D-
(R.D.C.H TYPE B et C)