

PROJET DE CONSTRUCTION D'UN GROUPEMENT D'HABITATION EN  
R+4 (HABITATION + COMMERCE) DE LOGEMENT A FAIBLE VIT 140.000 DHS  
ET DE LOGEMENT PROMOTIONNELS NON CONCERNÉ PAR LA CONVENTION

ROYAUME DU MAROC

WILAYA DE LA RÉGION  
DE RABAT-SALÉ-KÉNTRA  
PREFECTURE DE SALÉ  
COMMUNE DE SALÉ  
ARRONDISSEMENT HSSAÏNE

PLAQUETTE APD

TRANCHE C - OPÉRATION FIRDAOUS



**Abdeljalil DOUBI**  
Architecte DPA

Architecture, Urbanisme  
Aménagement, Intérieur  
Design & Maquette

89, Rue Ryad, Appt 6, Hassan, Rabat  
Tél / Fax : +212 537 78 99 78 - e-mail: aadarchitecture@gmail.com

ATELIER D'ARCHITECTURE

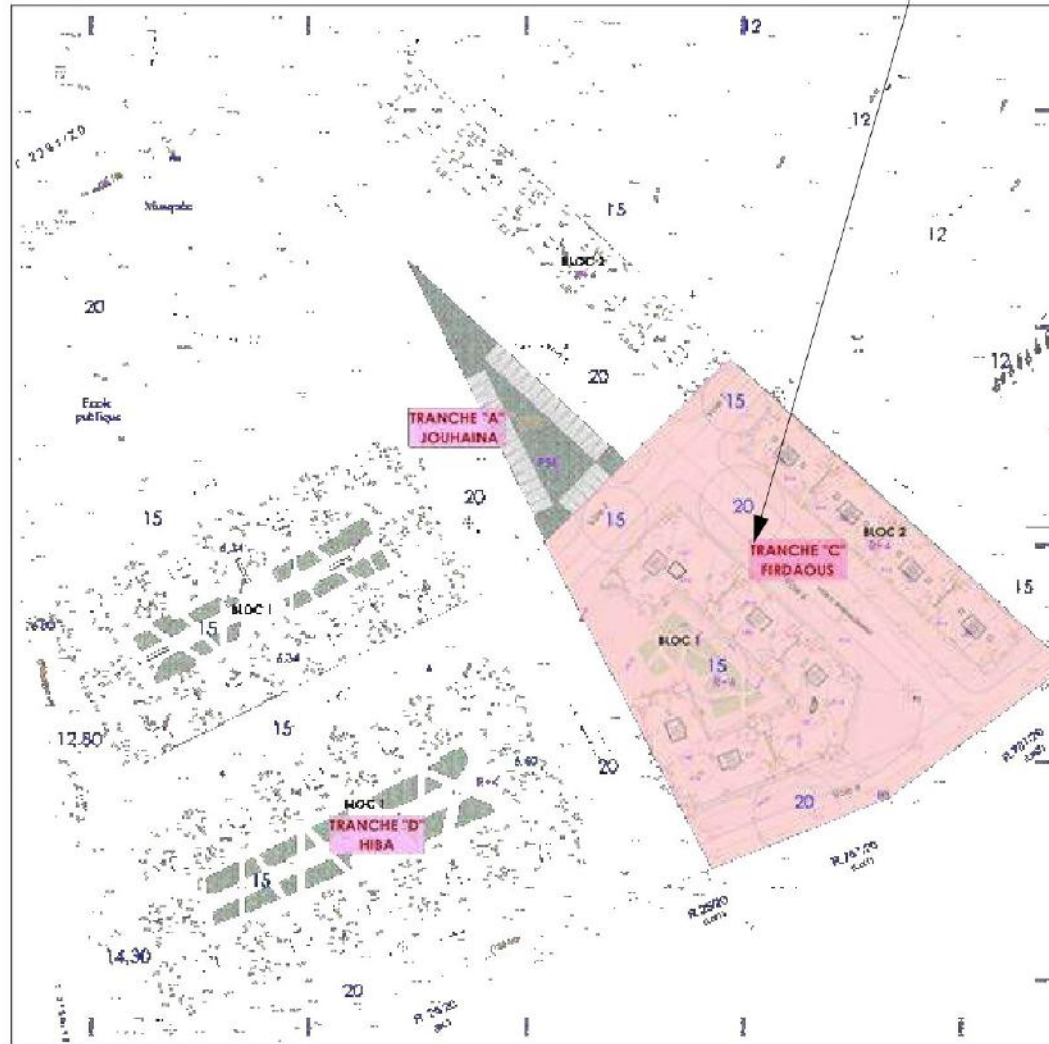
**HAJJI &  
EL OUALI**  
ASSOCIÉS



MAITRE D'OUVRAGE : AL OMRANE-RABAT S.A

Situation

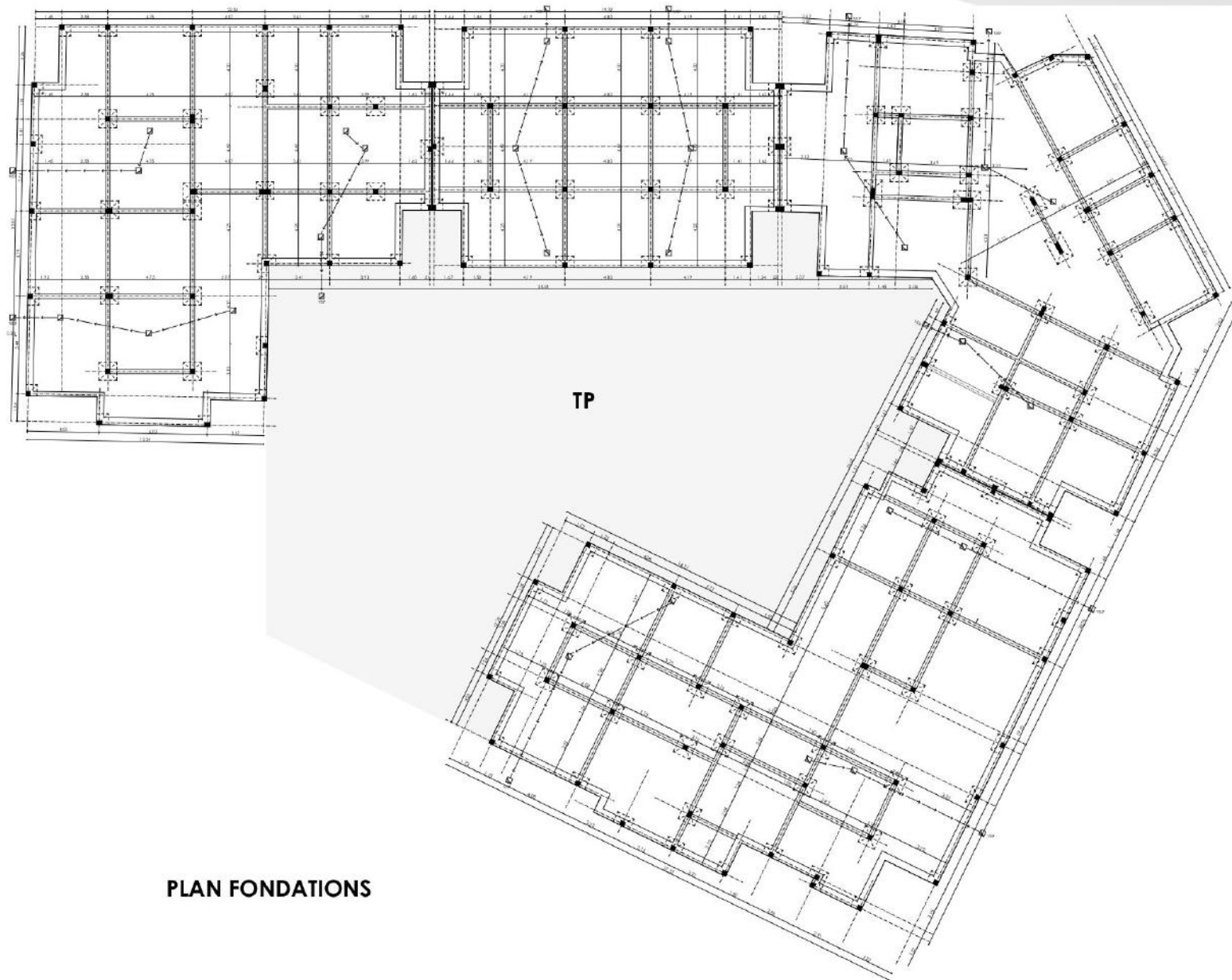
PROJET





# **BLOC - 1**

Plan de fondation

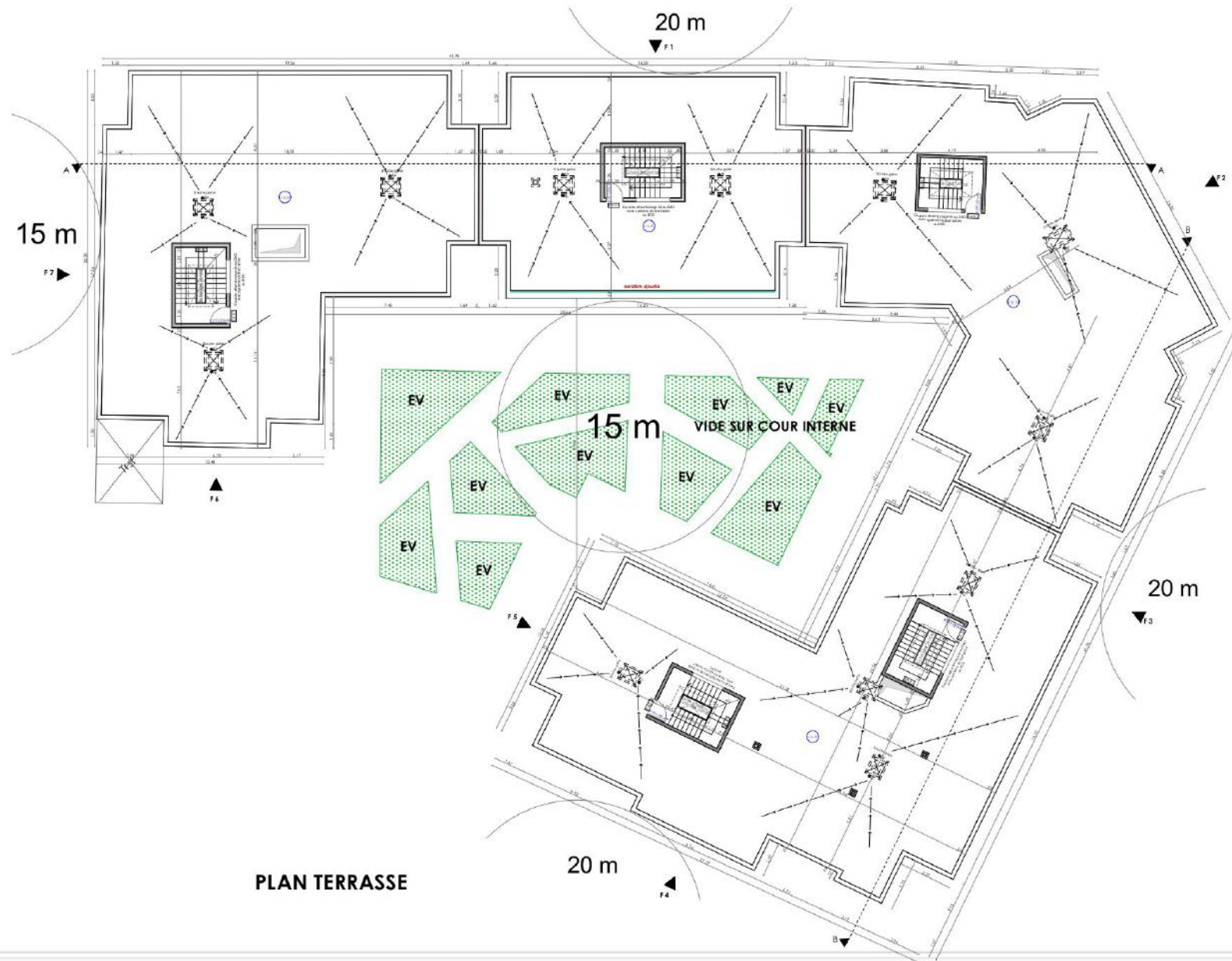


PLAN FONDATIONS



Plan d'étage courant





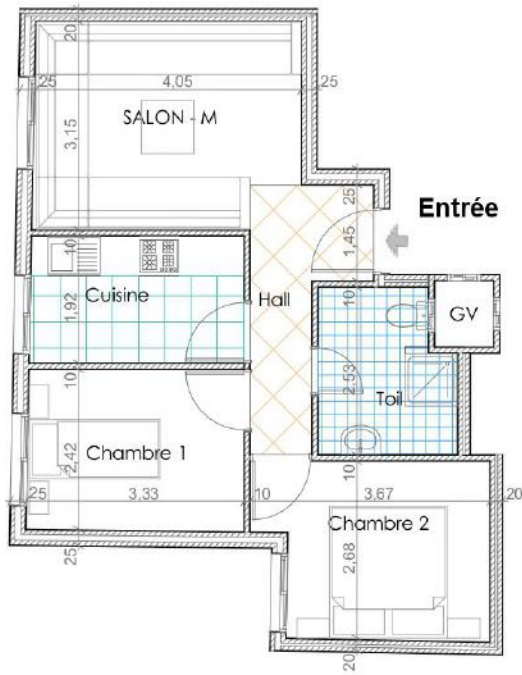
PLAN TERRASSE





Situation

IMMEUBLE 137					
Commerces	commerce 1	commerce 2	commerce 3	commerce 4	commerce 5
Surfaces (m <sup>2</sup> )	29,50	26,00	31,00	27,00	28,00



Surface hors oeuvre = 54,00 m<sup>2</sup>

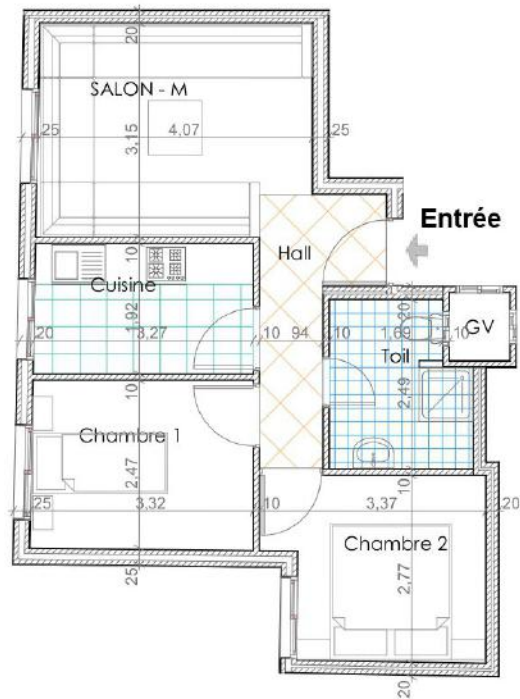


Situation



Rez de chaussée





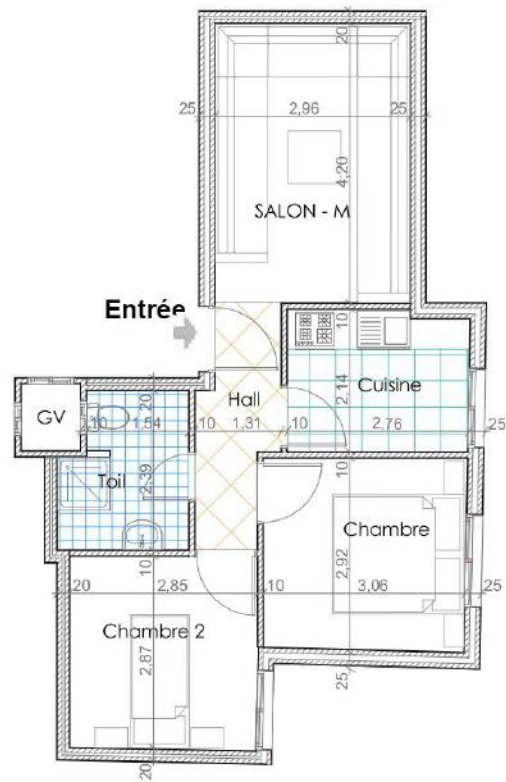
Surface hors oeuvre = 53,00 m<sup>2</sup>



Situation

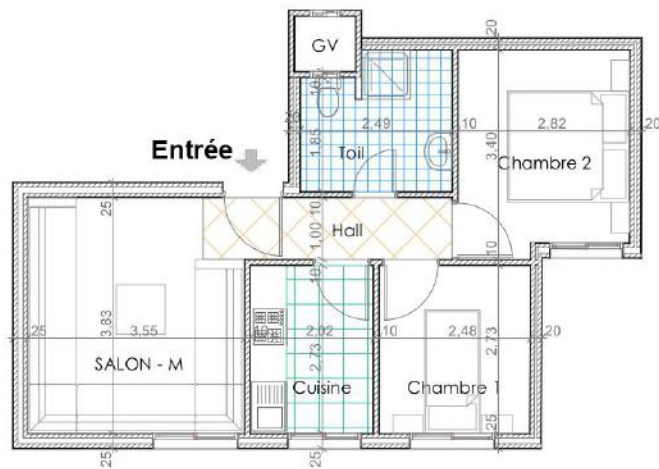


Etage courant



Surface hors oeuvre = 52,00 m<sup>2</sup>





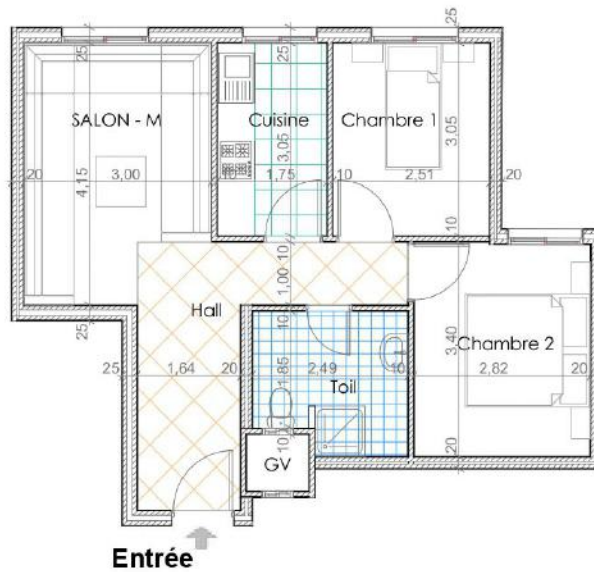
Surface hors oeuvre = 52,00 m<sup>2</sup>



Situation



Etage courant



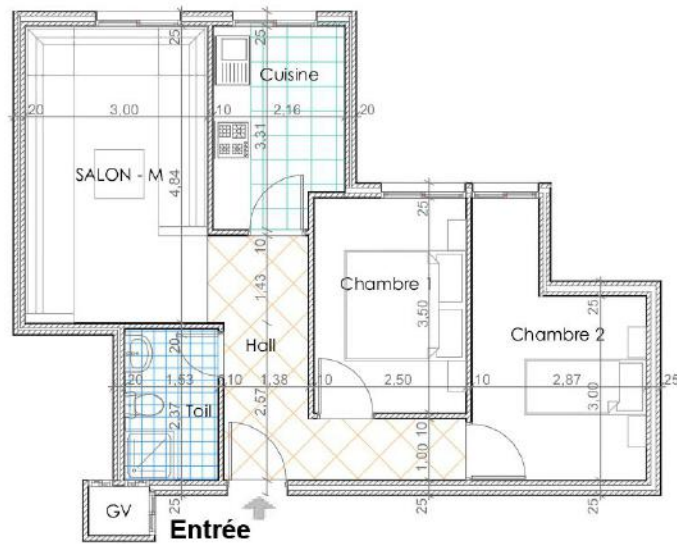
Surface hors oeuvre = 57,00 m<sup>2</sup>



Situation



Etage courant



Surface hors oeuvre = 60,00 m<sup>2</sup>

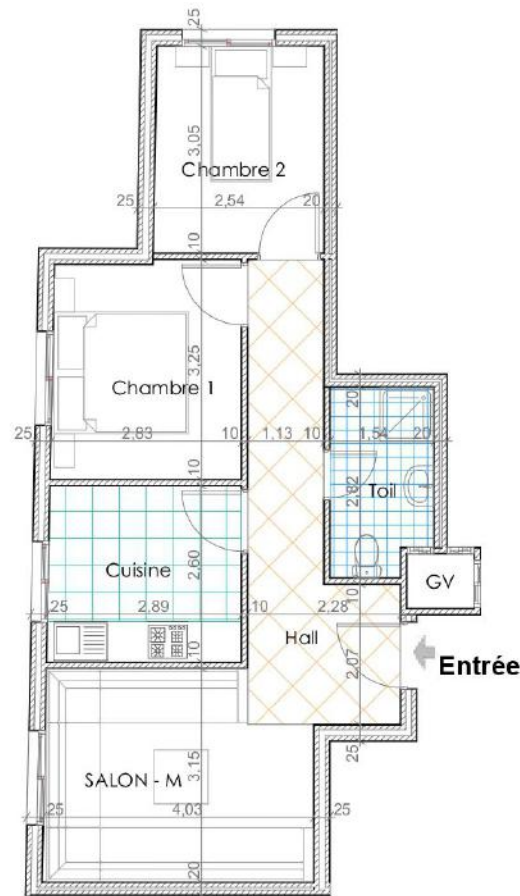


Situation



Etage courant





Surface hors oeuvre = 59,00 m<sup>2</sup>



Situation



Etage courant

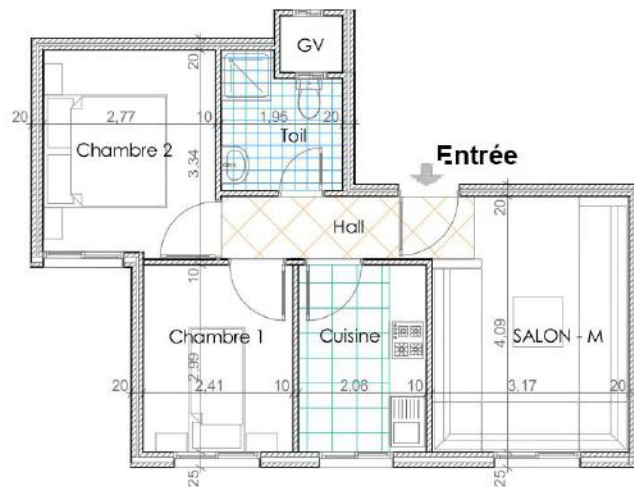
**IMMEUBLE - 138**  
**Commerces 1-2-3**  
**Boutique 1-2**

**Rez-de-chaussée**



**Situation**

IMMEUBLE 138						
Commerces	commerce 1	commerce 2	commerce 3	Boutiques	Boutique 1	Boutique 2
Surfaces (m <sup>2</sup> )	24,00	16,00	23,00	Surfaces (m <sup>2</sup> )	12,00	12,00



**Surface hors oeuvre = 51,00 m<sup>2</sup>**



Situation



Rez de chaussée





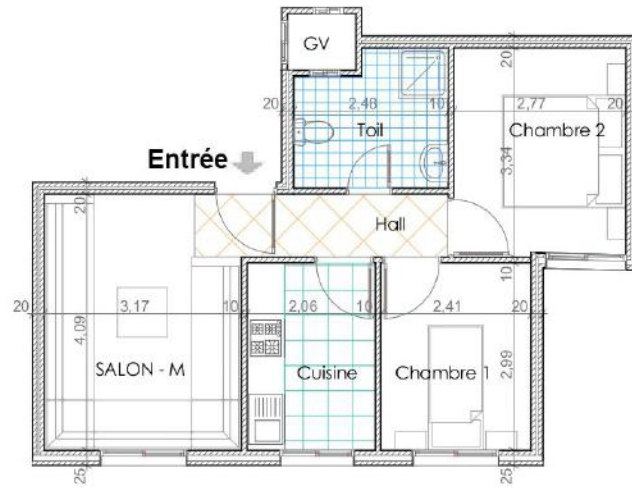
Surface hors oeuvre = 52,00 m<sup>2</sup>



Situation



Etage courant



Surface hors oeuvre = 52,00 m<sup>2</sup>



Situation



Etage courant



Surface hors oeuvre = 52,00 m<sup>2</sup>



Situation

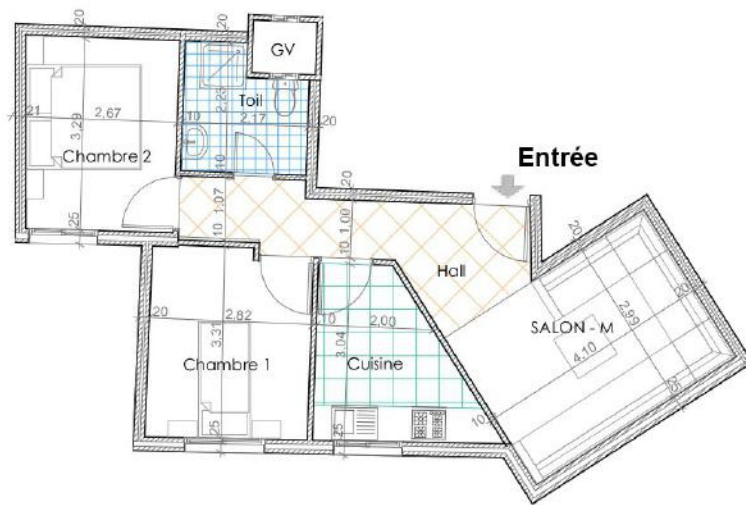


Etage courant



IMMEUBLE 139									
Commerces	commerce 1	commerce 2	commerce 3	commerce 4	commerce 5	commerce 6	Boutiques	Boutique 1	Boutique 2
Surfaces (m <sup>2</sup> )	31,50	34,00	23,00	23,00	42,00	28,00	Surfaces (m <sup>2</sup> )	15,00	19,00

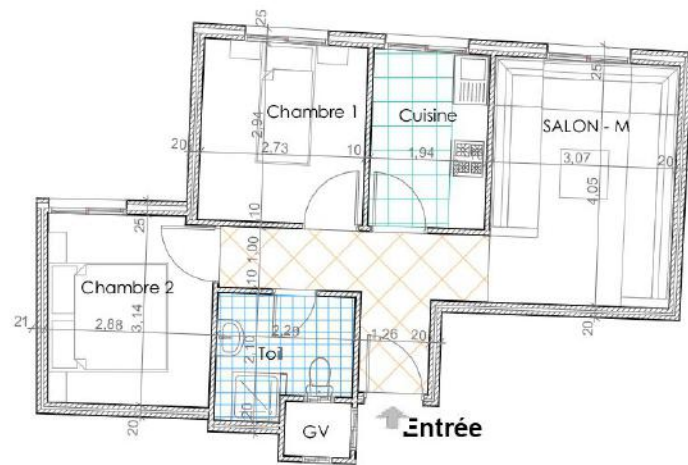




**Surface hors oeuvre = 59,00 m<sup>2</sup>**



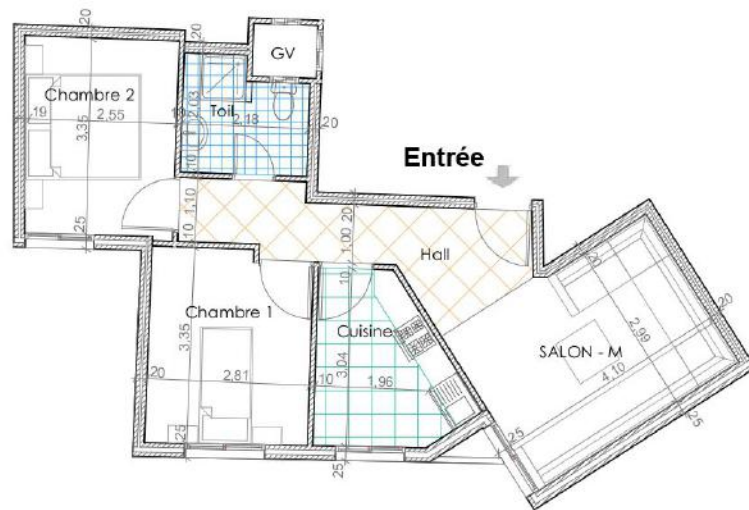
Rez de chaussée



**Surface hors oeuvre = 53,00 m<sup>2</sup>**



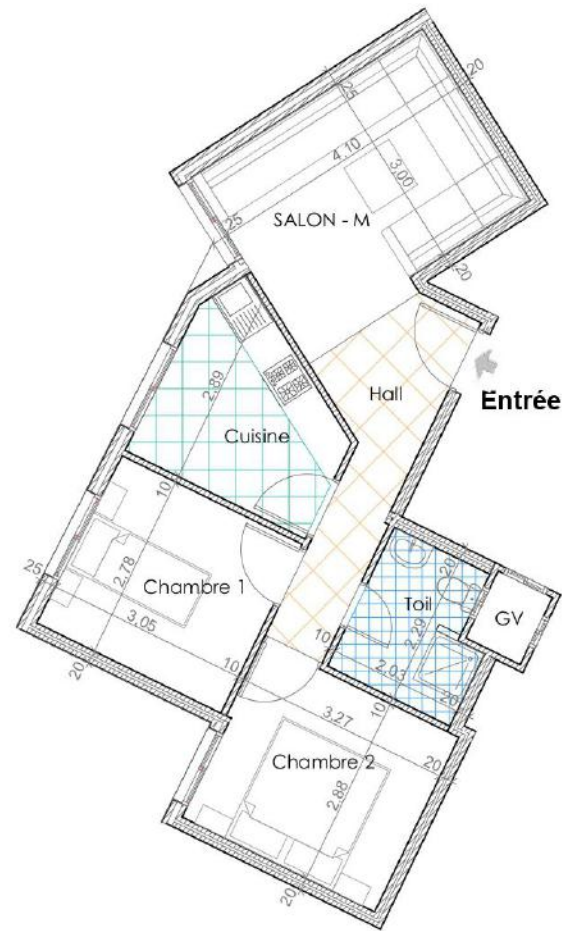
Etage courant



**Surface hors oeuvre = 58,00 m<sup>2</sup>**



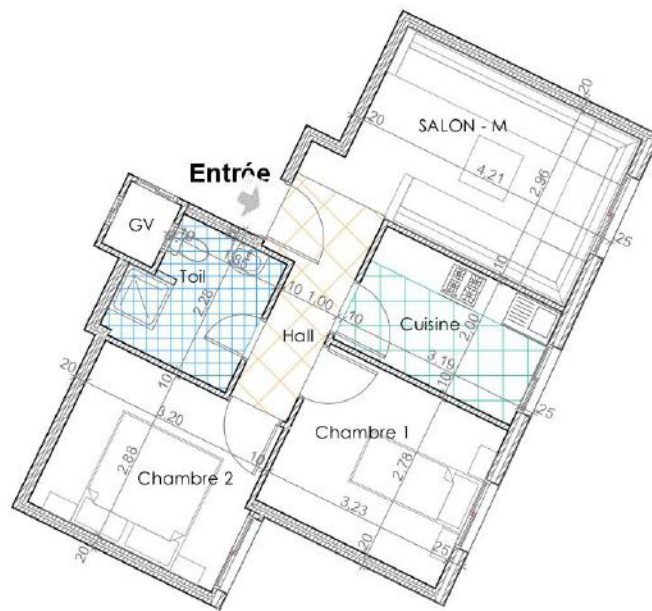
Etage courant



Surface hors oeuvre = 57,00 m<sup>2</sup>



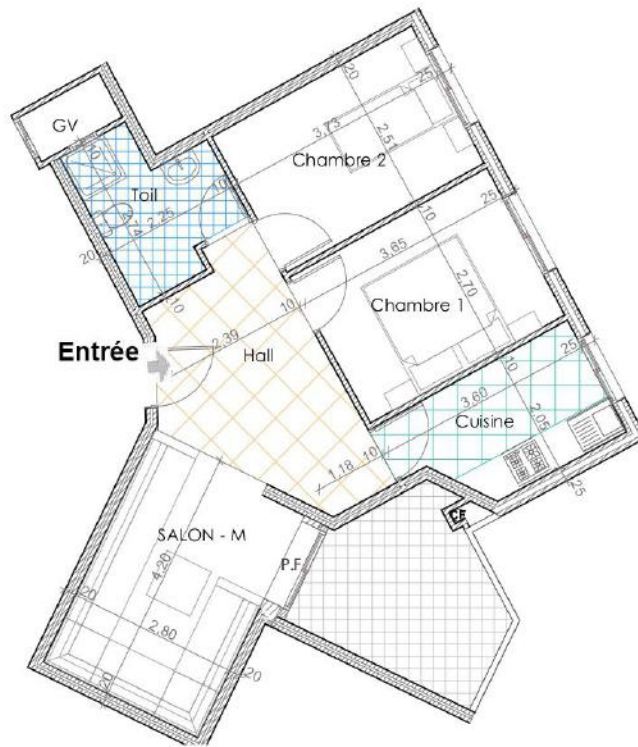
Etage courant



**Surface hors oeuvre = 54,00 m<sup>2</sup>**



Etage courant



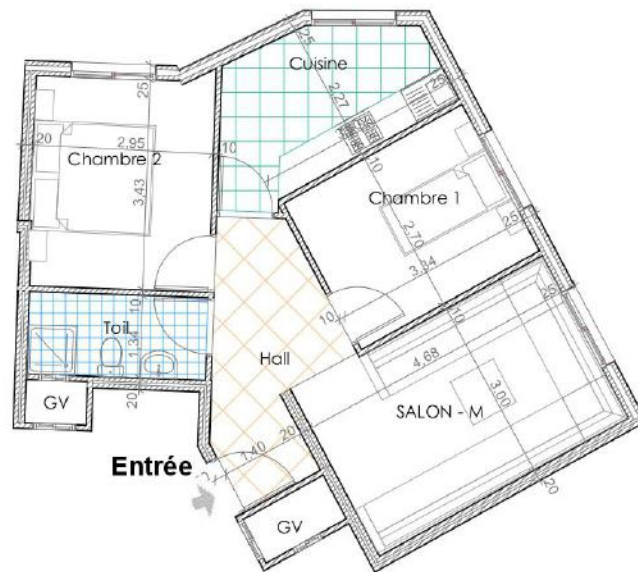
**Surface hors oeuvre = 60,00 m<sup>2</sup>**



Situation



Etage courant

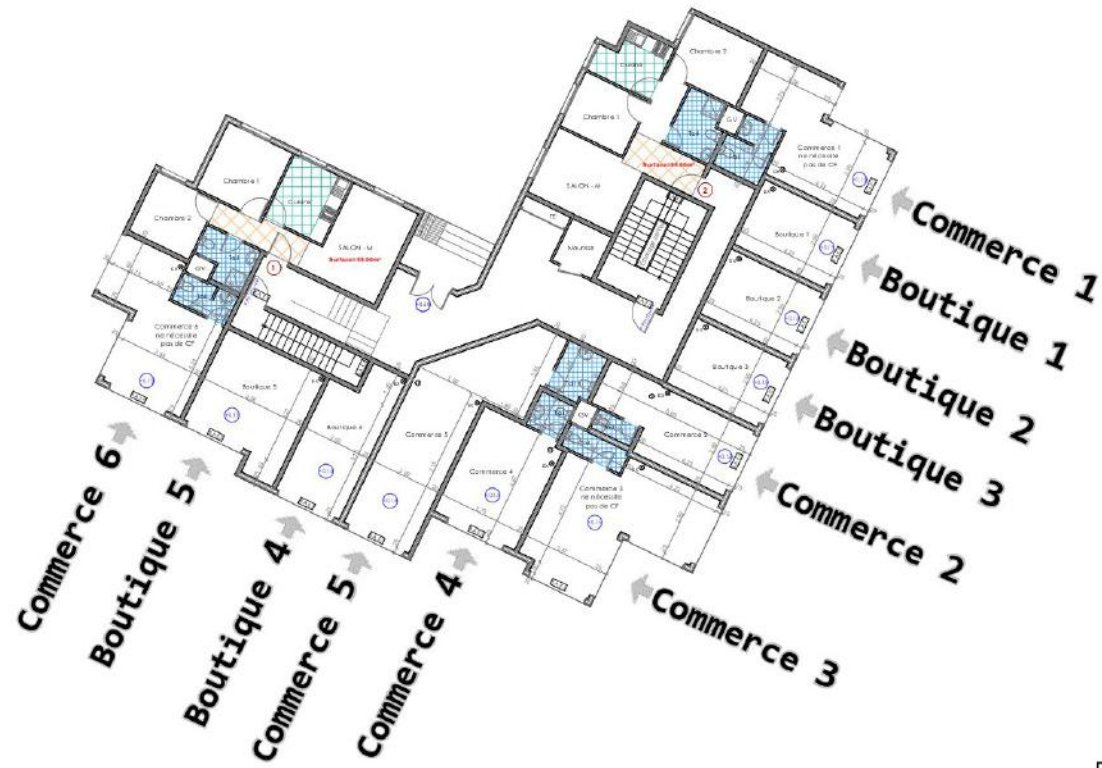


**Surface hors oeuvre = 60,00 m<sup>2</sup>**



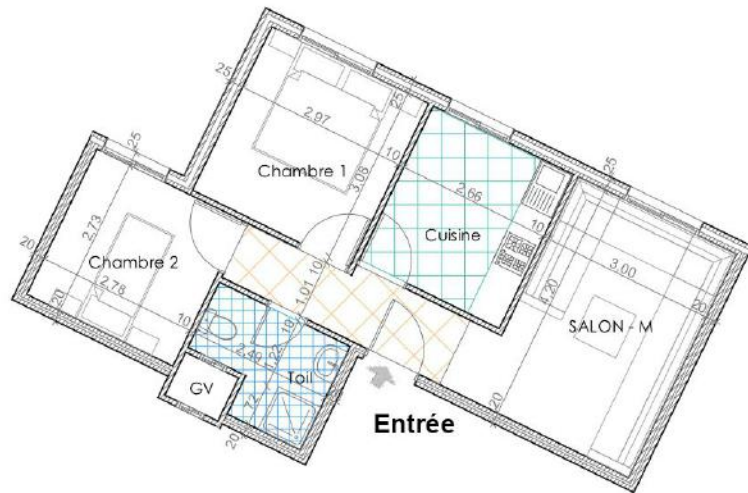
Etage courant

**Commerces 1-2-3-4-5-6  
Boutiques 1-2-3-4-5**



IMMEUBLE 140												
Commerces	commerce 1	commerce 2	commerce 3	commerce 4	commerce 5	commerce 6	Boutiques	Boutique 1	Boutique 2	Boutique 3	Boutique 4	Boutique 5
Surfaces (m²)	26,00	19,00	31,00	21,00	38,00	25,00	Surfaces (m²)	13,00	13,00	13,00	17,00	20,50





**Surface hors oeuvre = 55,00 m<sup>2</sup>**



Situation



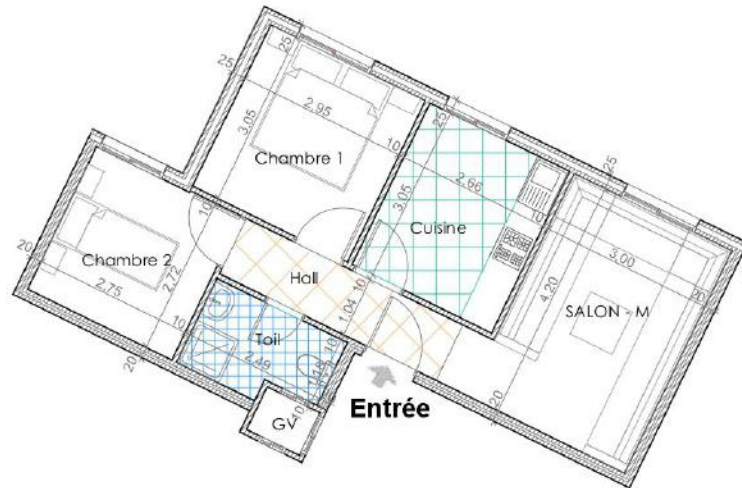
Rez de chaussée



Surface hors oeuvre = 55,00 m<sup>2</sup>



Rez de chaussée



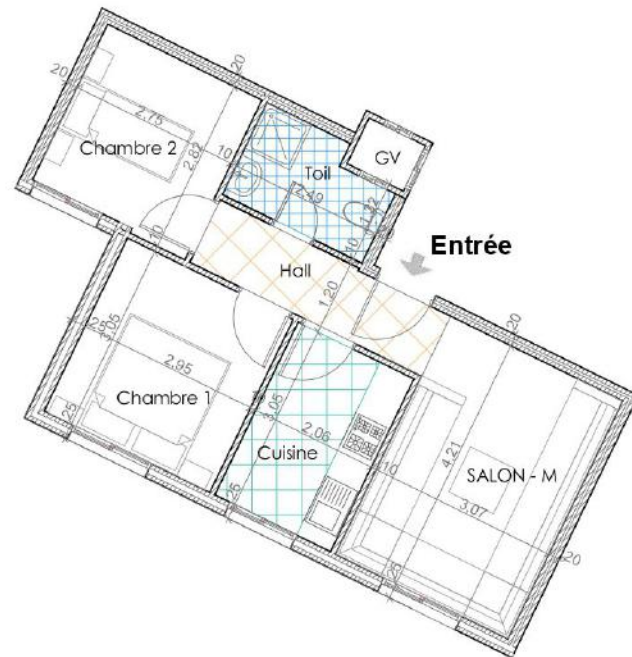
Surface hors oeuvre = 54,00 m<sup>2</sup>



Situation



Etage courant



Surface hors oeuvre = 52,00 m<sup>2</sup>



Situation



Etage courant



**Surface hors oeuvre = 60,00 m<sup>2</sup>**



Situation



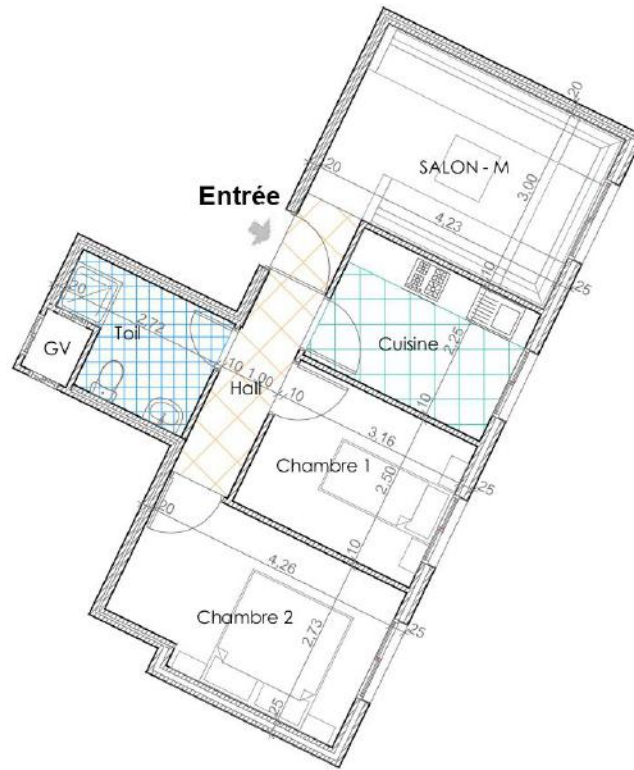
Etage courant



Surface hors oeuvre = 58,00 m<sup>2</sup>



Etage courant



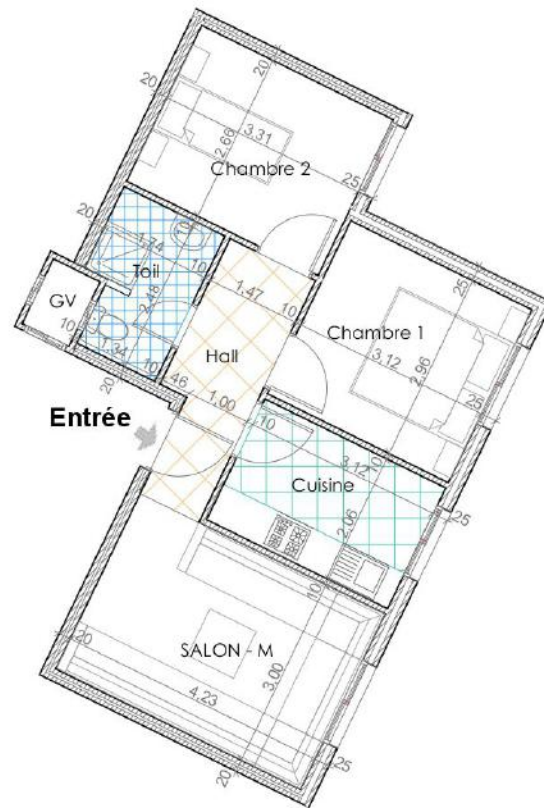
Surface hors oeuvre = 57,00 m<sup>2</sup>



Situation



Etage courant



Surface hors oeuvre = 54,00 m<sup>2</sup>

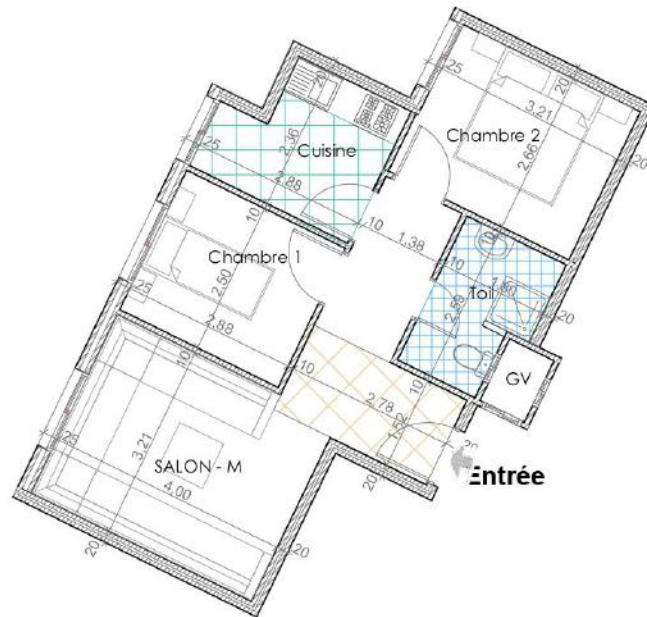


Situation



Etage courant





Surface hors oeuvre = 54,00 m<sup>2</sup>

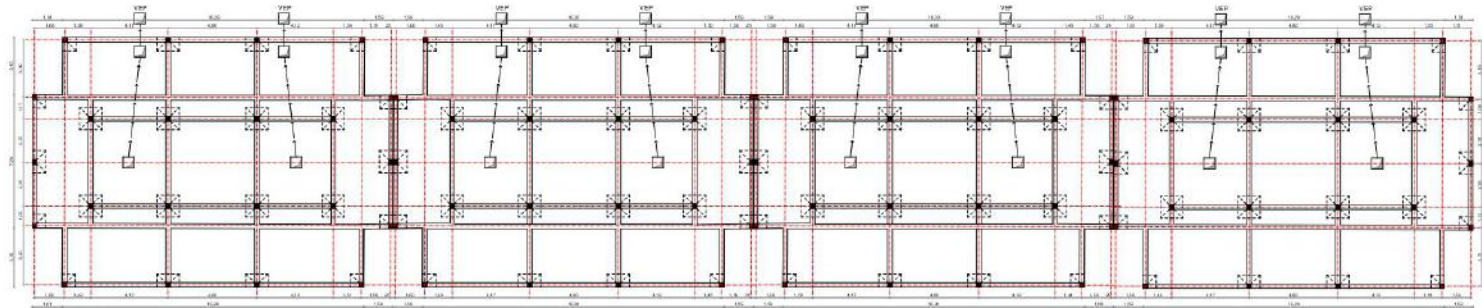


Situation



Etage courant

# **BLOC - 2**



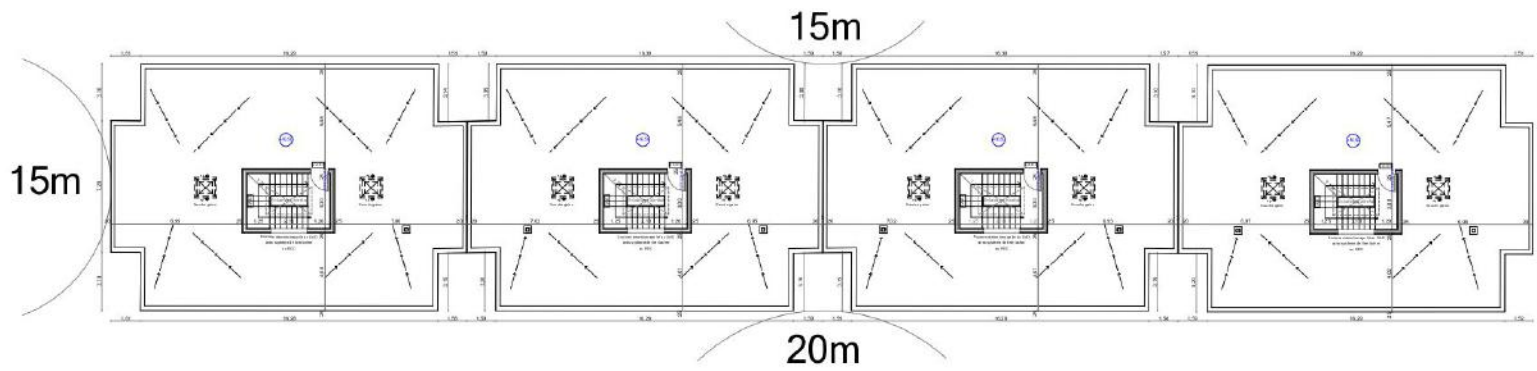
PLAN FONDATIONS



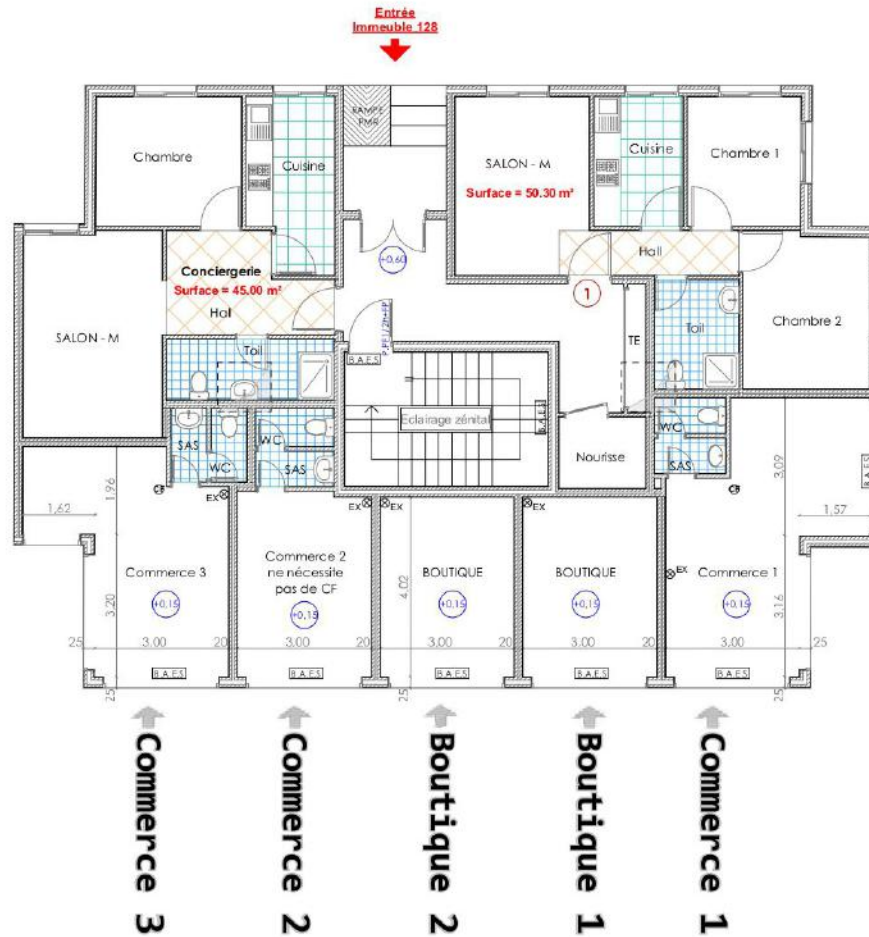
PLAN REZ DE CHAUSSEE



Etage courant

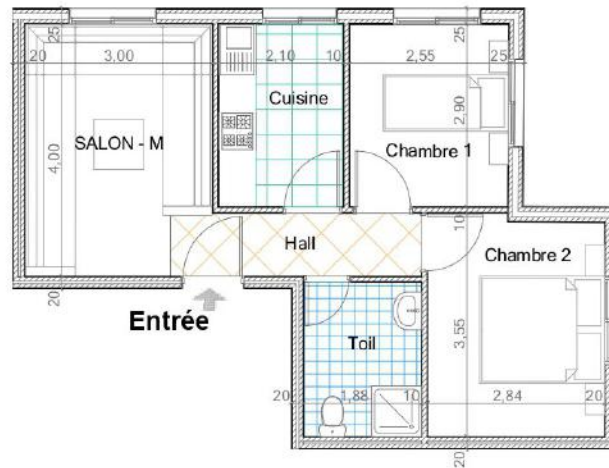


PLAN TERRASSE



Situation

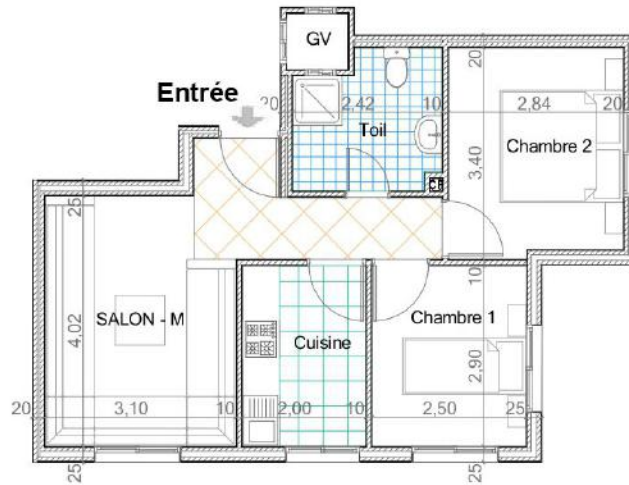
IMMEUBLE 128						
Commerces	commerce 1	commerce 2	commerce 3	Boutiques	Boutique 1	Boutique 2
Surfaces (m <sup>2</sup> )	24,00	15,60	20,40	Surfaces (m <sup>2</sup> )	12,00	12,00



Surface hors oeuvre = 50,30 m<sup>2</sup>



Rez de chaussée



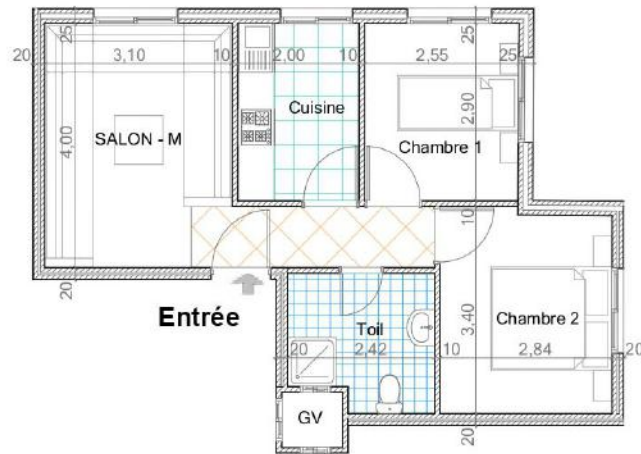
**Surface hors oeuvre = 52,00 m<sup>2</sup>**



Situation



Etage courant

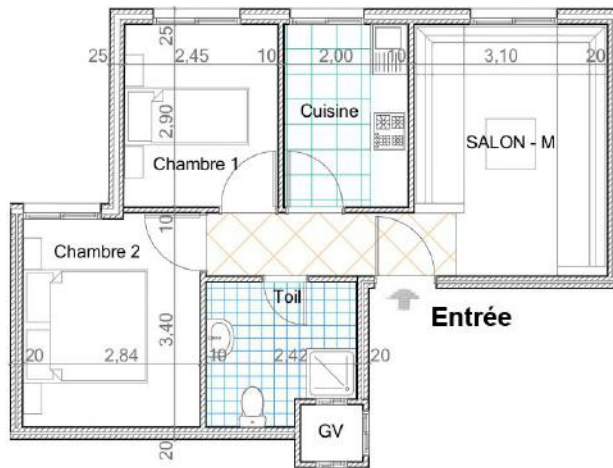


**Surface hors oeuvre = 50,60 m<sup>2</sup>**



Etage courant

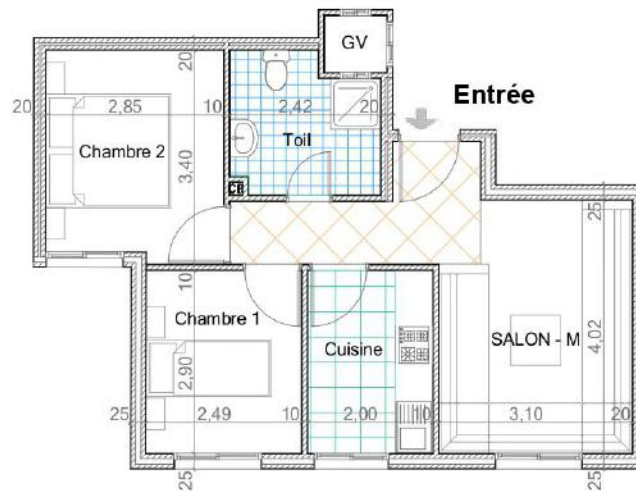




**Surface hors oeuvre = 50,30 m<sup>2</sup>**



Etage courant



Surface hors oeuvre = 52,00 m<sup>2</sup>

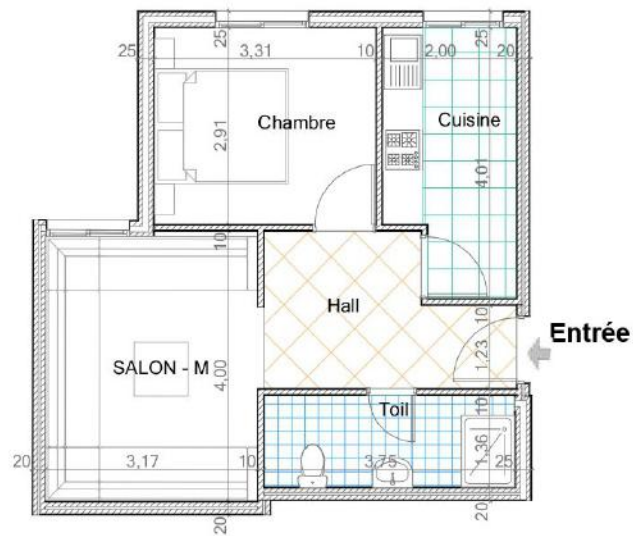


Situation



Etage courant



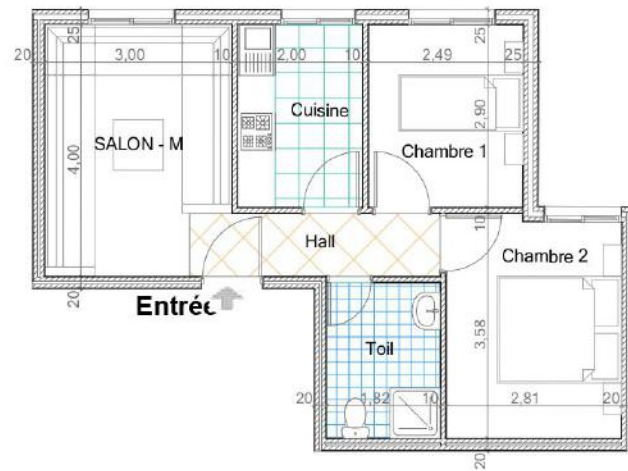


Logement promotionnel

Surface hors oeuvre = 48,50 m<sup>2</sup>



Rez de chaussée



Surface hors oeuvre = 50,00 m<sup>2</sup>



Situation



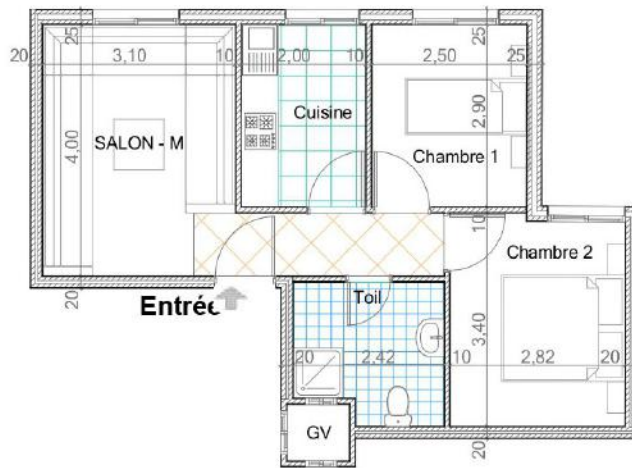
Rez de chaussée



Surface hors oeuvre = 52,00 m<sup>2</sup>



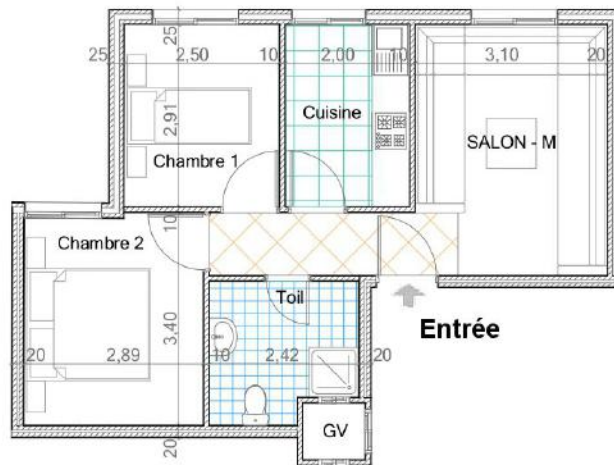
Etage courant



Surface hors oeuvre = 50,40 m<sup>2</sup>



Etage courant

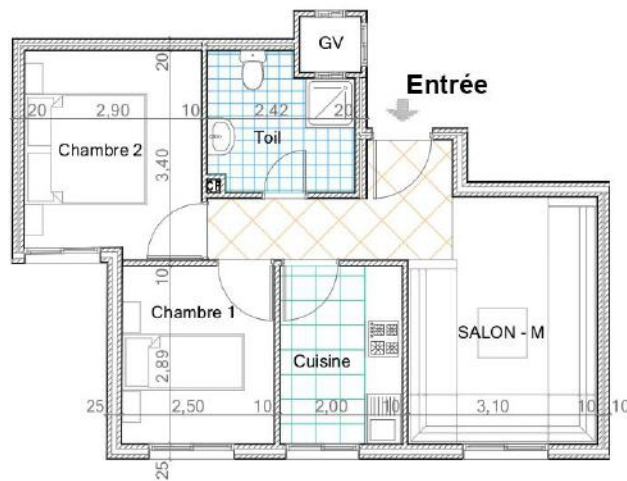


**Surface hors oeuvre = 50,70 m<sup>2</sup>**



Etage courant





Surface hors oeuvre = 52,00 m<sup>2</sup>



Etage courant

IMMEUBLE - 130

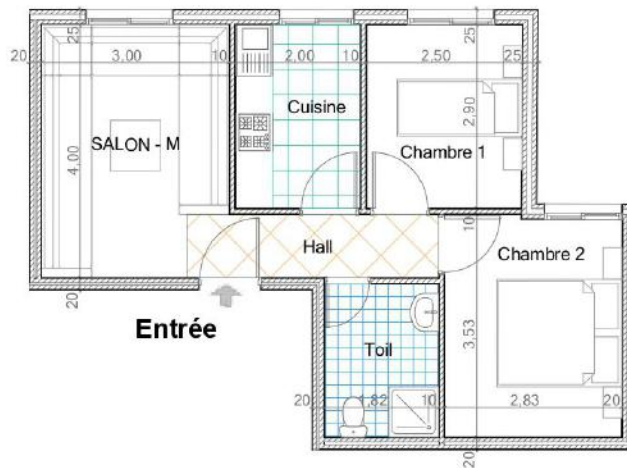
Commerces 1-2-3

Boutique 1-2

Rez-de-chaussée



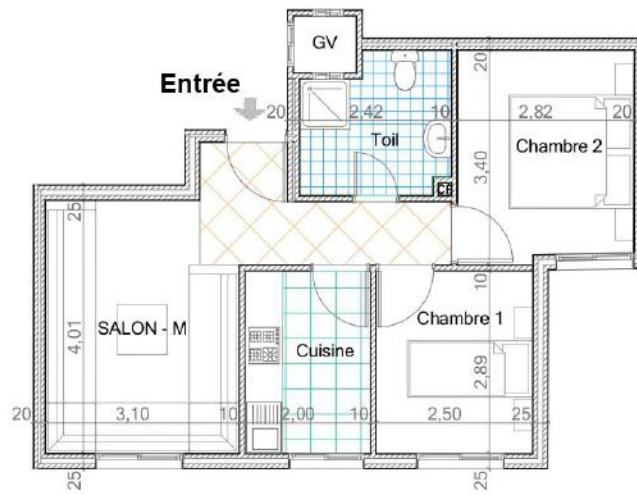
IMMEUBLE 130						
Commerces	commerce 1	commerce 2	commerce 3	Boutiques	Boutique 1	Boutique 2
Surfaces (m <sup>2</sup> )	24,00	15,55	20,70	Surfaces (m <sup>2</sup> )	12,00	12,00



Surface hors oeuvre = 50,00 m<sup>2</sup>



Rez de chaussée



Surface hors oeuvre = 52,00 m<sup>2</sup>



Situation



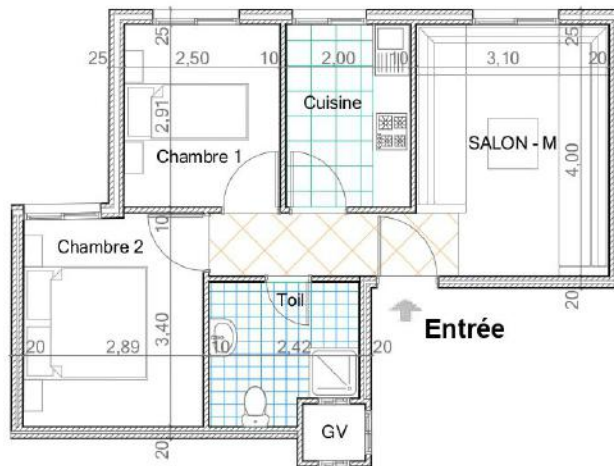
Etage courant



**Surface hors oeuvre = 50,50 m<sup>2</sup>**



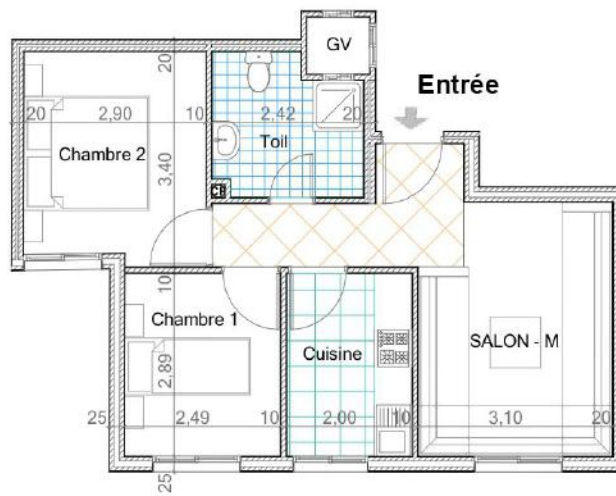
Etage courant



**Surface hors oeuvre = 50,75 m<sup>2</sup>**



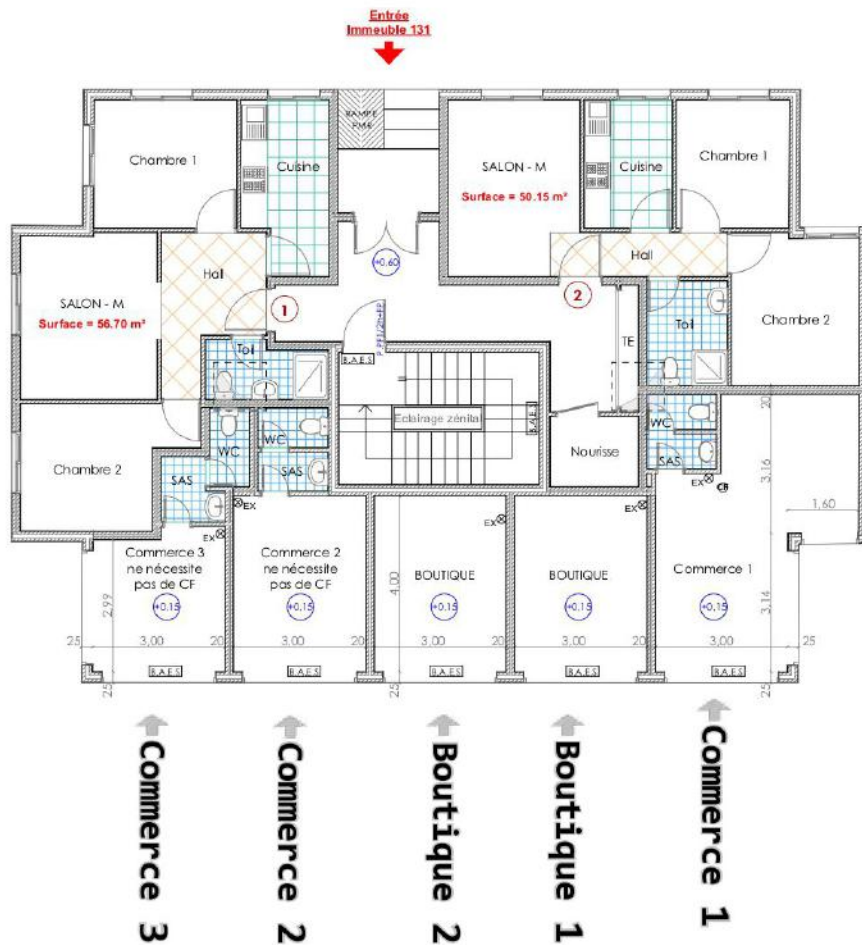
Etage courant



**Surface hors oeuvre = 52,00 m<sup>2</sup>**

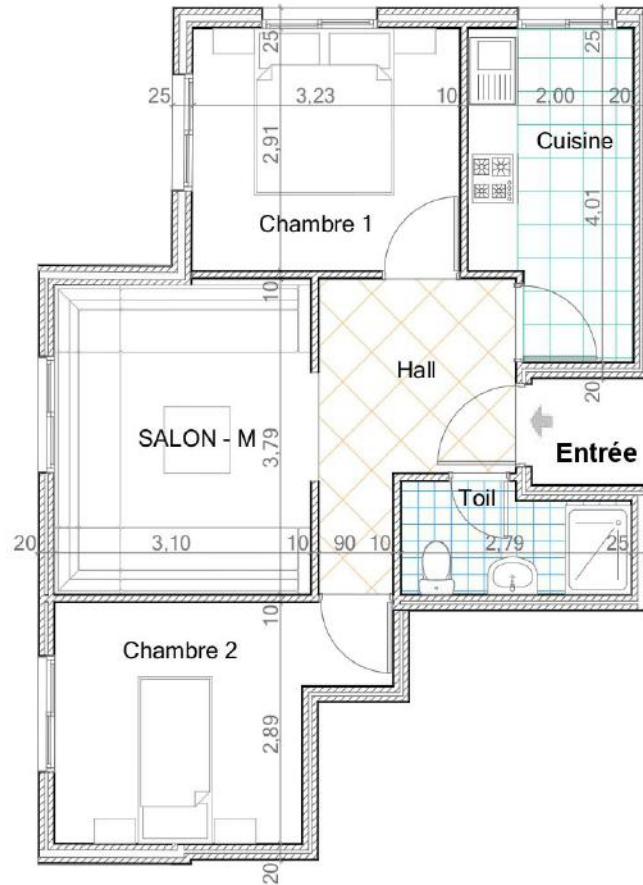


Etage courant



IMMEUBLE 131						
Commerces	commerce 1	commerce 2	commerce 3	Boutiques	Boutique 1	Boutique 2
Surfaces (m <sup>2</sup> )	24,30	15,15	13,00	Surfaces (m <sup>2</sup> )	12,00	12,00





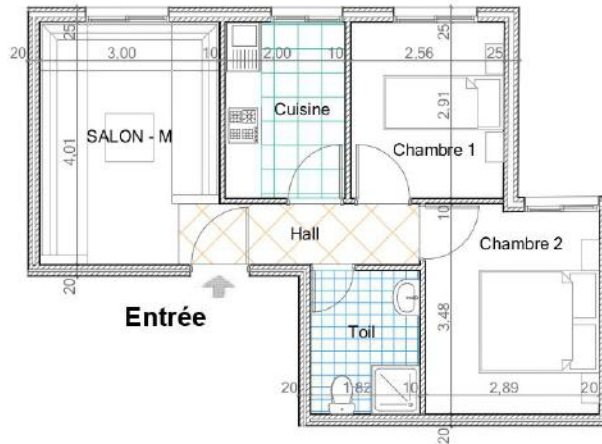
Surface hors oeuvre = 56,70 m<sup>2</sup>



Situation



Rez de chaussée



**Surface hors oeuvre = 50,15 m<sup>2</sup>**



Rez de chaussée



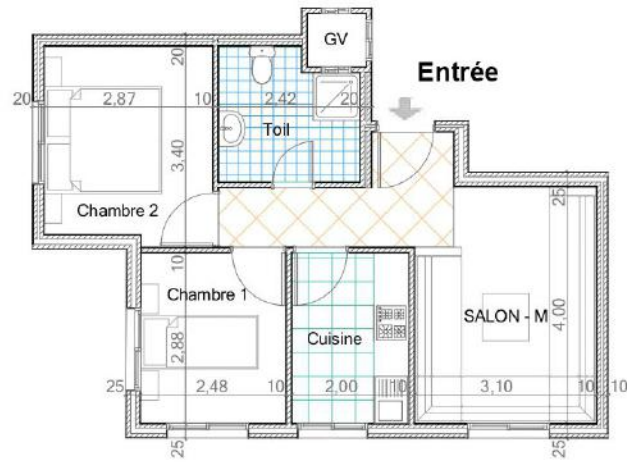
Surface hors oeuvre = 52,00 m<sup>2</sup>



Etage courant







**Surface hors oeuvre = 51,80 m<sup>2</sup>**



Situation



Etage courant